

COMMODORE 128 CP/M BOOT IN A FEW EASY STEPS:

Download latest WinVICE version (prefer x64 versions if possible) from

<http://www.viceteam.org/#download>

Download a working CP/M 3.0 Floppy disk image, like this one:

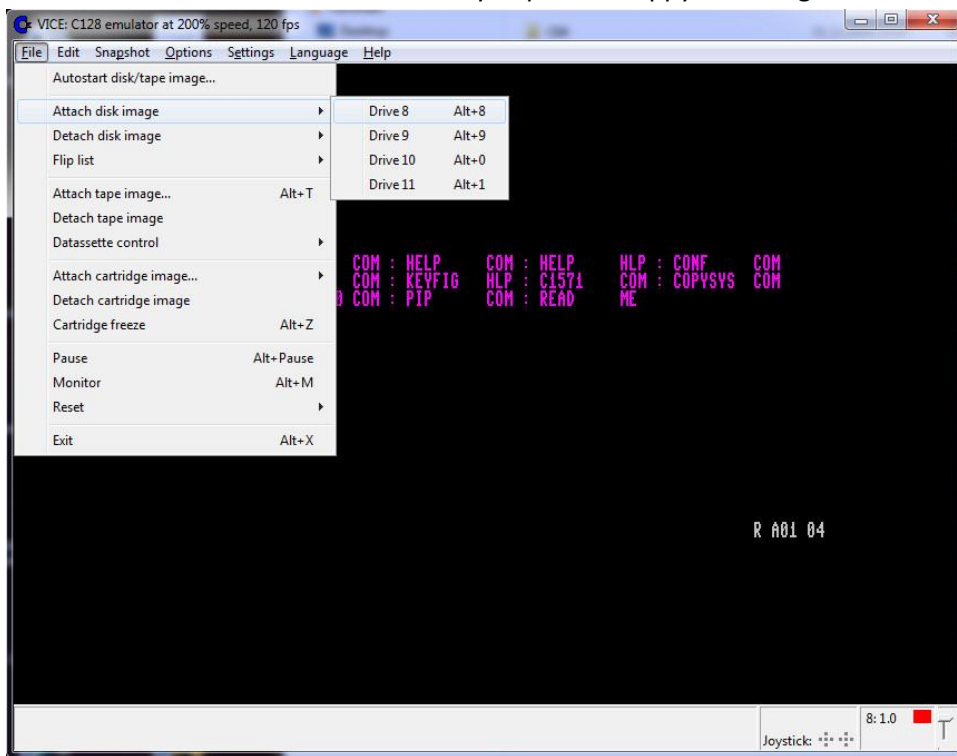
<http://www.zimmers.net/anonftp/pub/cbm/demodisks/c128/cpm.system.622-3282252.d64.gz>

Unpack / decompress all files if necessary, ZIP and GZ (Gnu ZIP) can be easily unpacked by using WINRAR (<http://www.rarlab.com/download.htm>) or similar universal compressor programs.

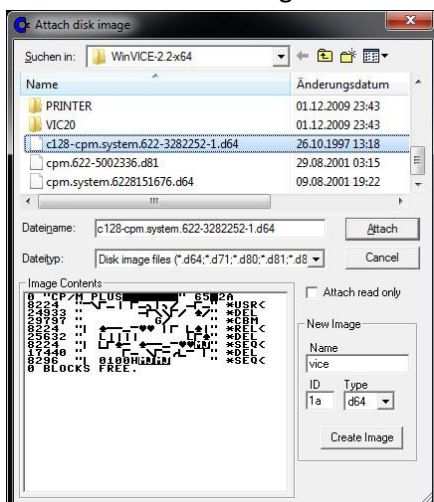
Start Commodore 128 emulator by double clicking at **x128.exe** icon.

If x128 is started and has mouse focus, press **F7** for switching 40/80 column display.

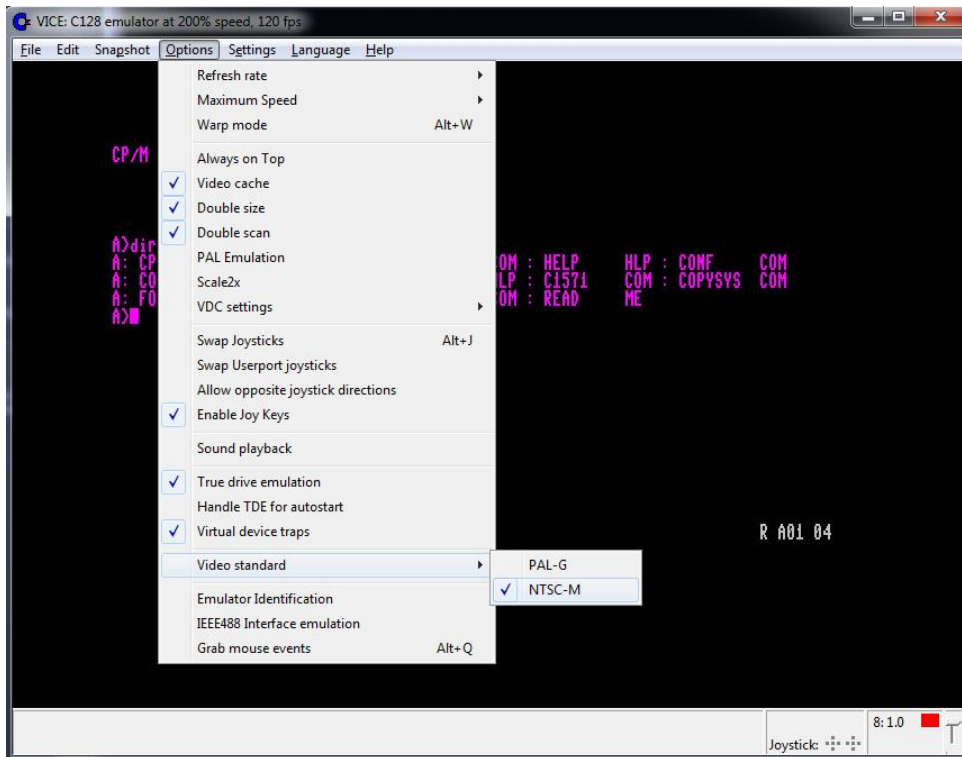
Go to "File" menu and attach the freshly unpacked floppy disk image from above, use **DRIVE 8**.



and select the disk image file



Depending of the language of this floppy disk image (English, German, ...) switch to NTSC or PAL.



For a soft reset, press now **Alt-R**.

Your virtual C128 should boot and show the initial loading screen (memory banks a.s.o.).

To accelerate it, press **Alt-W** for “Warp mode”.

When “A>” prompt appears, don’t forget to switch back to normal speed by pressing Alt-W the second time.

Now you should be able to enter a CP/M command like “dir” – looks like this:

