

Lenovo 3000 V200 Setup Poster

P/N 42W9060

3/12/2007

Size : 11x14 inches

Color : 2 color job = ■ Process Black (This plate must be printed in PMS Process Black C)

■ Process Magenta (This plate must be printed in PMS 1375C)

Font : IBM Fonts and Helvetica Neue Family

Material : 100 gsm gloss art paper (Use 100% recycled paper in only Japan.)

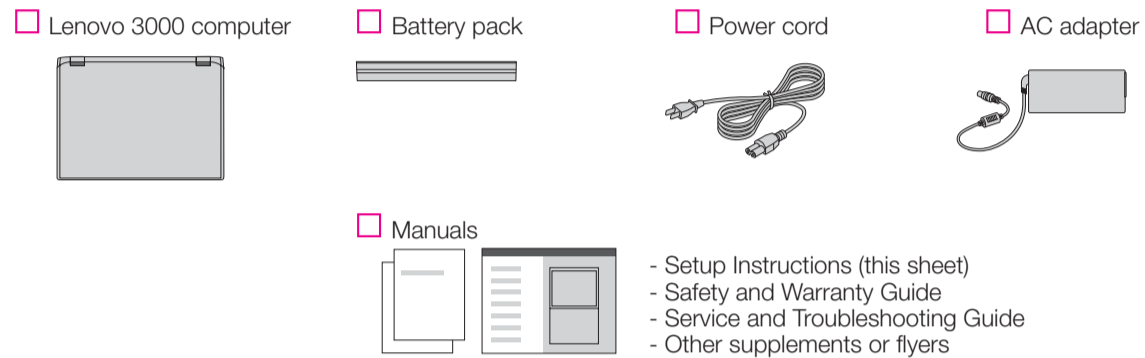
Blue line shows die-cut. DO NOT PRINT.

Please change the barcode No.

Please change the country name if the poster is printed in other than China.

Lenovo 3000

Unpack



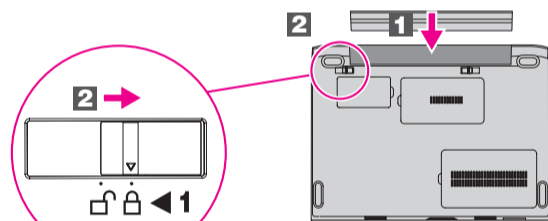
See reverse for notes about unlisted, missing, or damaged items and a recovery disc.

Initial Setup Instructions

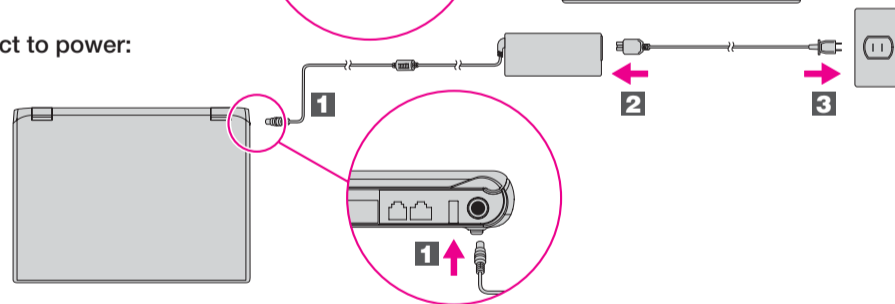


Read the safety notices and important tips in the included manuals before using your computer.

- 1 Install battery pack:**
Your battery is ready to use.



- 2 Connect to power:**



- 3 Turn on the power:**



- 4 Point and click with touch pad:**
Move across the touch pad in the direction you want to move the pointer. The touch pad and the left and right buttons at the bottom of the keyboard function like mouse buttons.

- 5 Configure the Operating System following on-screen instructions:**
This process takes several minutes.

- 6 For more detailed information, press the Lenovo CareSM button:**



- 1 Wireless LAN antennas (main and auxiliary)**

- 1a Wireless LAN antenna (third)***
*Specific models only.

- 2 Integrated camera***
*Specific models only.

- 3 Power button**



- 4 Lenovo Care button**



- 5 Instant on button**
Launch media applications when your computer is powered on or off.



- 6 Volume and mute buttons**

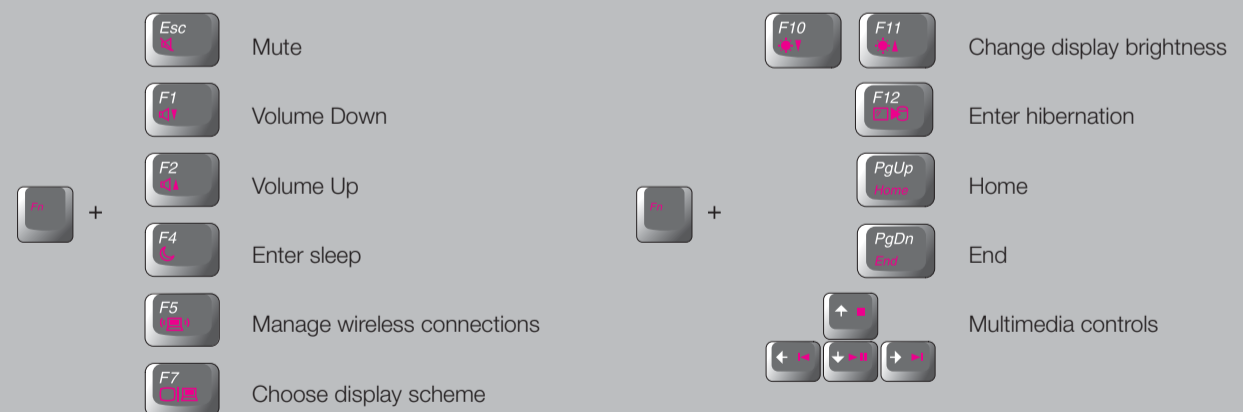


- 7 Wireless radio switch**



- 8 Fingerprint reader***
*Specific models only.

- 9 Fn key**
Use in combination with other keys to access special features.



Lenovo 3000 V200 Setup Poster

P/N 42W9060

3/12/2007

Size : 11x14 inches

Color : 2 color job = ■ Process Black (This plate must be printed in PMS Process Black C)

■ Process Magenta (This plate must be printed in PMS 1375C)

Font : IBM Fonts and Helvetica Neue Family

Material : 100 gsm gloss art paper (Use 100% recycled paper in only Japan.)

Blue line shows die-cut. DO NOT PRINT.

Please change the barcode No.

Please change the country name if the poster is printed in other than China.

Lenovo 3000

To learn more about Lenovo technology and other items, open the Lenovo Care by pressing the Lenovo Care button.



Lenovo Care

Lenovo Care guides you to a host of information and tools to help you set up, understand, maintain, and enhance your computer.



Access Connections™

Access Connections allows you to seamlessly switch between wired and wireless environments while automatically managing security settings, printers, home page and other location-specific settings.



Presentation Director

Presentation Director helps you plan and give presentations with confidence, even when you are away from your office.



Rescue and Recovery™

Rescue and Recovery includes a set of recovery tools to help you diagnose, get help and recover from system crashes quickly, even if the primary operating system will not boot and you are unable to contact your support team.



Message Center

Message Center displays messages to inform you about helpful software that has been preinstalled on your computer. Message Center can also provide messages about new updates available to keep your computer current.



Help Center

Help Center acts as the interface for the user's guide, system tools, services, and Lenovo Web sites on the Internet.

To learn more, press the Lenovo Care button:



Using Access Help (online manual) and the included manuals

To find detailed information about your computer, open Access Help, or see the Safety and Warranty Guide or the Service and Troubleshooting Guide.



Access Help

Access Help is a comprehensive online manual that provides answers to most of your questions about your computer, helps you to configure preinstalled features and tools, or solve problems.

To open Access Help, do either of the following:

- Press the Lenovo Care button. Under Quick Links in the Lenovo Care, click "Access on-system help."
- Click Start, move the pointer to All Programs; then to Lenovo Care. Click Access Help.



Safety and Warranty Guide

- Important safety information
- Operating environment and other important notices
- Warranty information



Service and Troubleshooting Guide

- Introduction to other sources of information
- Important tips for taking care of your computer
- Diagnostics and troubleshooting
- Recovery options
- Help and service
- Warranty information for your computer

* Additional unpacking notes:

- 1) Some models may contain items that are not listed.
- 2) If any item is missing or damaged, please contact your place of purchase.
- 3) Everything for recovering factory-installed files and applications is on your hard disk eliminating the need for a recovery disc. For more information, see "Recovery options" in the Service and Troubleshooting Guide.

© Copyright Lenovo 2007.
All rights reserved.

The following terms are trademarks of Lenovo in the United States, other countries, or both:

Lenovo
Lenovo Care
Access Connections
Rescue and Recovery

Printed in China

For Barcode Position Only