
Making Basic Measurements

Publication Number 16700-97020
August 2001

**Training Kit for the Agilent
Technologies 16700-Series
Logic Analysis System**

Making Basic Measurements: a self-paced training guide

This book teaches you how to set up and make measurements with the Agilent Technologies 16700-Series Logic Analysis Systems using the credit card board provided in this kit.

What materials do I need?

You need the following materials to make measurements using the credit card board:

- One Agilent Technologies 16700-Series Logic Analysis System with a state/timing measurement module. To do chapter 8, you will also need an oscilloscope measurement module, and to do chapter 9, you will need a pattern generator measurement module.
- A monitor, keyboard, and mouse (unless you have the Agilent Technologies 16702A or 16702B).
- This training kit (Agilent part number 16700-60007).
- Probe assembly (Agilent part number 01650-61608) or a termination adapter (Agilent part number 01650-63203).

The examples in this manual were created using the following software and equipment:

- Software version A.02.30.00
- 16702B mainframe
- 16717A logic analyzer card
- 16534A oscilloscope module
- 16720A pattern generator module.

If you are using an older analyzer

If your logic analyzer interface appears different than the interface used in this training kit, then you have an analyzer with the older interface. There is a training kit for these analyzers that you can download from the web.

To download the manual off of the web:

- 1 Go to <http://www.agilent.com/find/logicanalyzer-manuals>.
- 2 Select “Making Basic Measurements, Training Kit for the Agilent Technologies 16600A/16700A-Series Logic Analysis System (PDF).”

You can either print the manual from the web page now, or you can save the PDF file to your hard drive and open it later (you must be able to read PDF files on your computer).

- To print the manual from the web page now, select *File*, and then *Print...* and specify how you want it to print.
- To save the PDF file to your hard drive, select *File*, and then *Save As...* Select the directory you want to save the file in and select *Save*.

In This Book

You can use this book in two ways: you can start with chapter 2 then progress chapter by chapter, or you can start with chapter 2 then randomly access the exercises you want to do with minimum setup.

Part 1: A Quick Tour

- ❑ Chapter 1, A Quick Tour, introduces you to logic analysis, your logic analysis system, and the steps you must take to make a measurement.

Part 2: Making Basic Measurements

In Part 2, you make real measurements with the credit card board.

- ❑ Chapter 2, Before You Begin
- ❑ Chapter 3, Introduction to Timing Analysis: Trigger on an Edge
- ❑ Chapter 4, Verify Pulse Widths
- ❑ Chapter 5, Introduction to State Analysis: Trigger on an Event
- ❑ Chapter 6, Trigger on a Sequence of Events
- ❑ Chapter 7, Trigger on a 4 Bit Serial Pattern
- ❑ Chapter 8, Trigger the Oscilloscope with the Timing Analyzer
- ❑ Chapter 9, Using the Pattern Generator

Part 3: Reference

Part 3 contains information about the credit card board and how to set the jumpers on the board.

- ❑ Chapter 10, Setting the Jumpers
- ❑ Chapter 11, All About the Credit Card Board

What Other Sources of Information Are There?

Installation Guide

The Installation Guide is a booklet that explains how to set up your Logic Analysis System.

Online Help System

The Online Help System gives you task help for the analyzer system and tools, as well as descriptions and conceptual information. The Help system also has a glossary section.

- To access online help, select *Help* from the icon bar.

Measurement Examples

Measurement Examples guides you through performing measurements with your system. Many common data measurements are described with instructions for setting up the analyzer.

- To access measurement examples, select *Help* from the icon bar. Choose *On Main System*, then select *Measurement Examples* from the Help window.

Contents

1 A Quick Tour

A Quick Tour	14
The Main System Window	16
The Measurement Process	18

2 Before You Begin

Before You Begin	22
------------------	----

3 Introduction to Timing Analysis: Trigger on an Edge

Introduction to Timing Analysis: Trigger on an Edge	28
Load the RESET Configuration File	30
Set Up the Timing Analyzer	31
Set Up the Bus Labels	32
Define Trigger Conditions: Trigger on an Edge	34
Run the Analyzer and View the Data	36
Use Markers to Make a Timing Measurement	38
Save Your Work	40
Lesson Summary	41

4 Verify Pulse Widths

Verify Pulse Widths	44
Load the RESET Configuration File	46
Set Up the Timing Analyzer	47
Set Up the Bus Labels	48
Define the Trigger Conditions: Trigger on a Pulse Width Violation	50
Run the Analyzer to Verify Pulse Widths	52
Save Your Work	54
Lesson Summary	55

5 Introduction to State Analysis: Trigger on an Event

Introduction to State Analysis: Trigger on an Event	58
Load the RESET Configuration File	60
Set Up the State Analyzer	61
Set Up the Bus Labels	62
Define the Trigger Conditions: Trigger on an Event	64
Run the Analyzer and View the Listing	67
Save Your Work	69
Lesson Summary	70

6 Trigger on a Sequence of Events

Trigger on a Sequence of Events	72
Load the RESET Configuration File	74
Set Up the State Analyzer	75
Set Up the Bus Labels	76
Trigger on a Sequence of Events	78
Run the State Analyzer and View the Listing	82
Save Your Work	83
Lesson Summary	84

7 Trigger on a 4 Bit Serial Pattern

Trigger on a 4 Bit Serial Pattern	86
Load the RESET Configuration File	88
Set Up the State Analyzer	89
Set Up the Bus Labels	91
Define the Trigger Conditions: Trigger on a 4-bit Serial Pattern	92
Run the Analyzer and View the Listing	94
Save Your Work	95
Lesson Summary	96

8 Trigger the Oscilloscope with the Timing Analyzer

Trigger the Oscilloscope with the Timing Analyzer	98
Load the RESET Configuration File	100
Connect the Oscilloscope Probe and Turn the Glitch On	102
Get the Analog Waveform on the Display	103
Set Up the Timing Analyzer	104
Set Up the Timing Analyzer to Trigger on the Glitch	106
Tell the Oscilloscope When to Trigger	108
Set Up the Analyzer to Arm the Oscilloscope	109
Run the Timing Analyzer and Oscilloscope	112
Add the Analog Waveform to the Timing Waveform	114
Turn the Glitch Off	115
Save Your Work	115
Lesson Summary	116

9 Using the Pattern Generator

Using the Pattern Generator	118
Load the RESET Configuration File	120
Connect the Pattern Generator	121
Set Up the Timing Analyzer	122
Set Up the Bus Labels	123
Define the Trigger Conditions: Trigger on a 1	124
Set Up the Pattern Generator	125
Program the Pattern Generator Output	127
Start the Pattern Generator and View the Walking Ones Pattern	130
Stop the Pattern Generator	132
Save Your Work	133
Lesson Summary	134

10 Setting the Jumpers

Setting the Jumpers 138

To Set the Jumpers 139

11 About the Credit Card Board

About the Credit Card Board 142

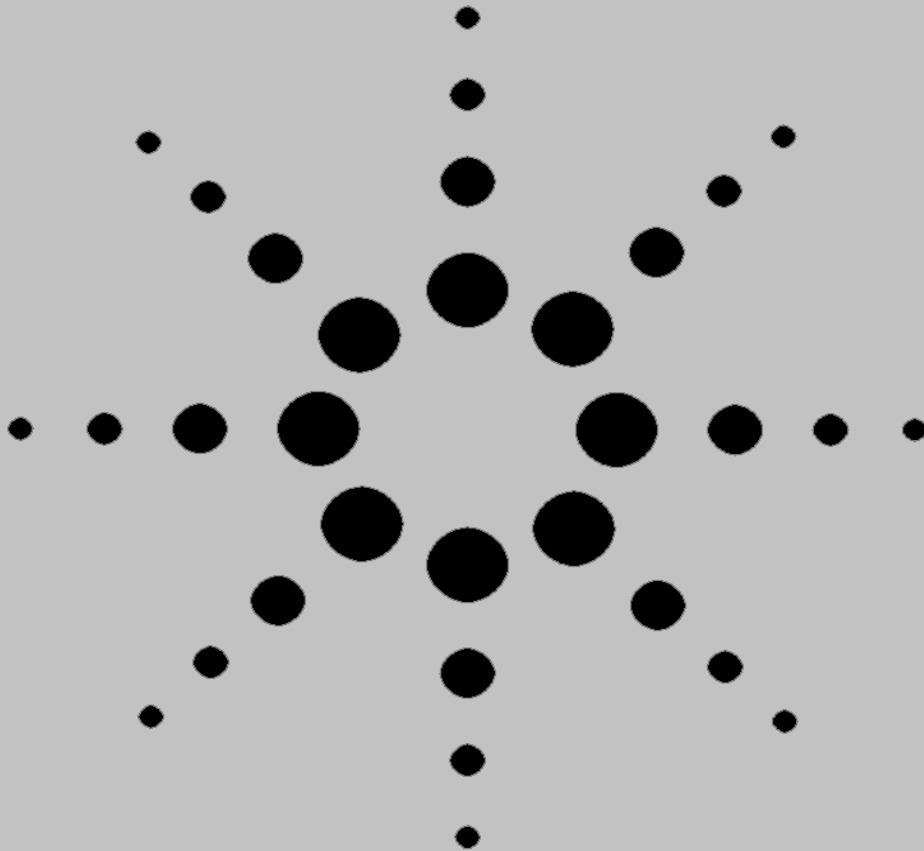
Power Source 142

Circuit Description 142

Jumpers 143

Credit Card Board Schematic 144

Part 1



A Quick Tour

A Quick Tour

A Quick Tour

Welcome to your new logic analysis system. You have the Agilent Technologies 16700-Series logic analysis system.



Your Agilent Technologies 16700-Series Logic Analysis System

The Agilent Technologies 16700 Series logic analysis system frame has five slots for measurement modules, and two dedicated emulation module slots.



The Agilent Technologies 16702A-Series logic analysis system also includes a built in flat-panel display and keyboard.



The Agilent Technologies 16702B-Series logic analysis system also includes a built in flat-panel display with touchscreen capabilities.

When Should I Use a Logic Analyzer?

In general, a logic analyzer is useful when you are beyond the parametric stage of design, and you are interested in timing relationships among many signals and need to trigger on logical highs and lows. Logic analyzers are particularly useful when looking at timing relationships or data on a bus. It can decode the information on microprocessor busses and present it in a meaningful form.

What is a Logic Analyzer?

Logic analyzers grew out of oscilloscopes. They present data in the same general way that an oscilloscope does; the horizontal axis is time, the vertical axis is voltage amplitude. But a logic analyzer does not provide as much voltage resolution or time interval accuracy as the oscilloscope. Instead, it can capture and display dozens or more signals at once - something that an oscilloscope cannot do.

A logic analyzer reacts the same way as your logic circuit does when a single threshold is crossed by a signal in your system. It will recognize the signal to be either high or low. The analyzer can also trigger on patterns of highs and lows on these signals.

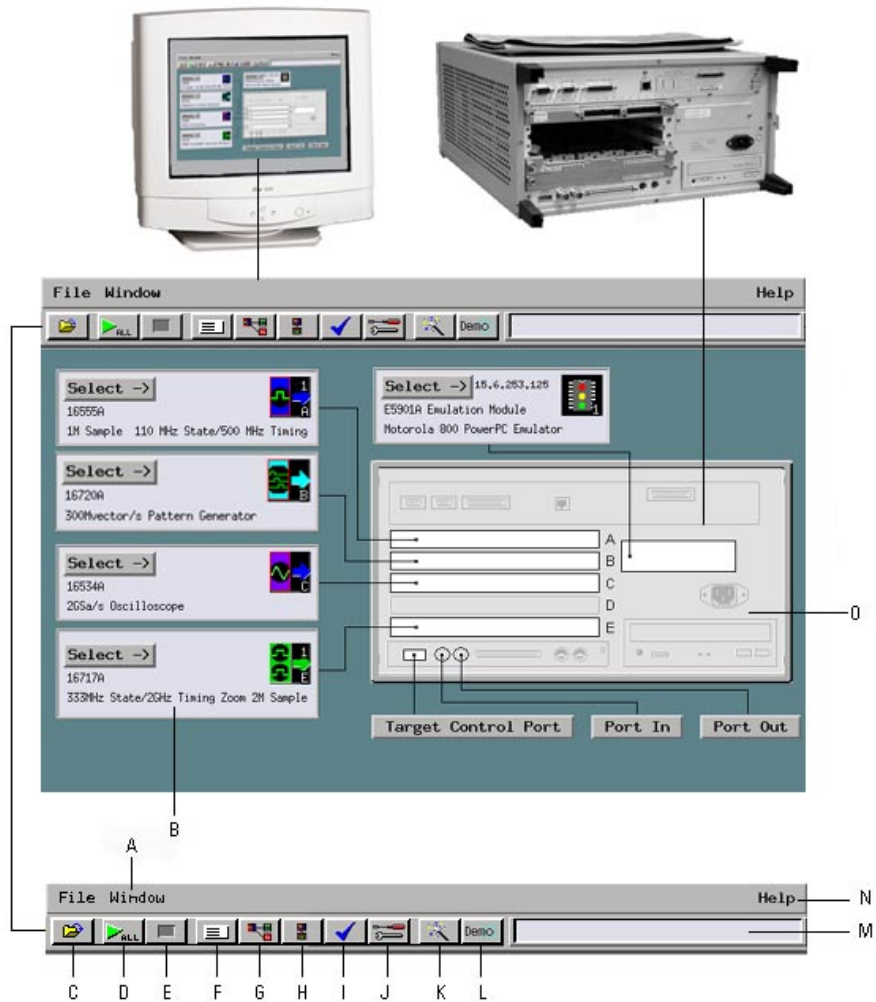
Up to now, the term “logic analyzer” has been used rather loosely. In fact, a logic analyzer can be configured as a timing analyzer, a state analyzer, a state and timing analyzer, or as two state analyzers.

What is a Timing Analyzer? A timing analyzer is analogous to an oscilloscope. It samples at regular time intervals, and displays the information in a waveform similar to the oscilloscope. Because the waveforms on both instruments are time-dependent, the displays are said to be in the “time domain”.

What is a State Analyzer? A state analyzer samples when you tell it to using an external clock. Each time the state analyzer receives a state clock pulse, it samples and stores the logic state of the system under test. The data can then be viewed as a sequential listing of logical states.

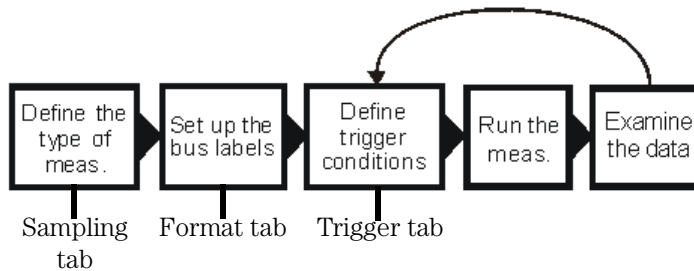
The Main System Window

The Main System window is your starting point for setting up and making measurements. It graphically shows which instruments are installed in the frame.



-
- A** *Window* is used to access instruments and the windows such as Setup..., Waveform..., Listing..., and the Source Viewer... window.
- B** Instrument icons are used to access the setup window for that particular instrument. Each icon represents the instrument installed.
- C** *File Manager* is used to perform the common tasks of loading or saving measurement configurations. The File Manager has all the standard functionality for performing operations on files and directories on both the flexible and hard disk drives.
- D** *Run* is used to start capturing data.
- E** *Stop* is used to stop the run, run repetitive, and group run functions.
- F** *System* displays the system power-up screen.
- G** *Workspace* shows a complete graphical representation of the tools and how they are connected for your measurement configuration.
- H** *Inter-Module* shows a graphical representation of the arming sequence between measurement modules, and any external trigger connections to a target system or other instruments.
- I** *Run Status* is used to monitor the run function, and feed back information on the progress of elements such as pre-store, trigger status, and post-store.
- J** *System Admin* is used to setup system defaults, network configurations, and perform maintenance on the operating system file set. If you are working in a multi-user environment (Secure mode), you set up user accounts in this dialog.
- K** *Microprocessor/Bus Setup Assistant* is used to start the automated process of setting up a microprocessor analysis measurement.
- L** *Demo* gives simple demonstrations of common features.
- M** The status line displays instructions on how to use parts of the interface by selecting the area of interest.
- N** *Help* gives you access to the main help system for the frame and system level operations.
- O** The back panel of the logic analysis system and the placements of the modules are graphically represented.
-

The Measurement Process



Define the type of measurement. Define how you want to sample data by selecting state mode or timing mode, and by setting up the state clock.

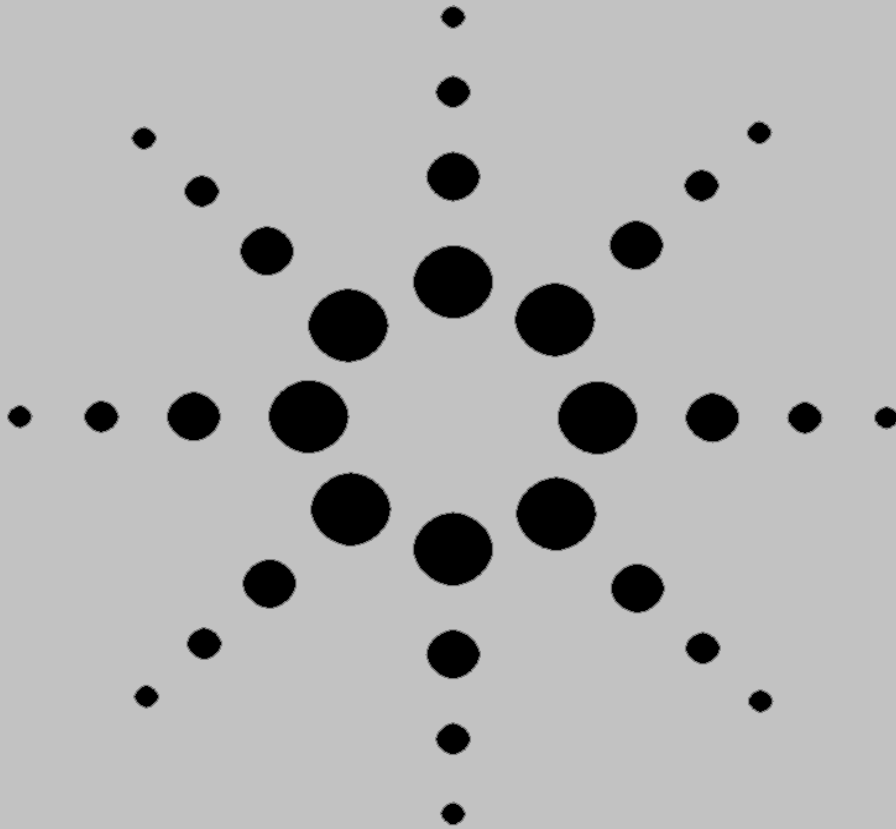
Set up the bus labels. Specify which signals you want to analyze by grouping and labeling the signals.

Define trigger conditions. Define the trigger conditions and events to control what the analyzer captures.

Run the measurement. Capture the data specified by the trigger conditions.

Examine the data. Use the waveform or listing windows to search, mark, and measure the data. It is common to go back and modify the trigger conditions to capture different data.

Part 2



Making Basic Measurements

Before You Begin

Before You Begin

Before you begin the exercises you must connect the credit card board, power up the Agilent Technologies 16700 logic analysis system, and save a default settings file named RESET for resetting the system at the beginning of each chapter.

Start Here

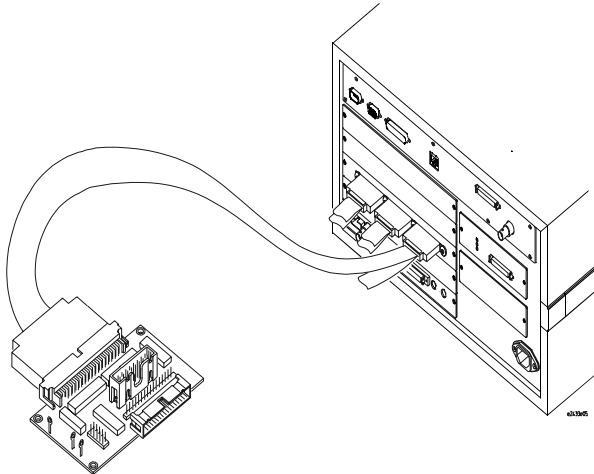
If you have not already connected the credit card board to the logic analyzer, follow all of the steps in this chapter.

If you have connected the credit card board, go to step 3.

Connect Pod 1 to the Credit Card Board

Agilent Technologies logic analyzers group their probes into pods. Each pod contains 16 data probes and a clock probe. For all exercises, you will use Pod 1 to probe J1 on the credit card board.

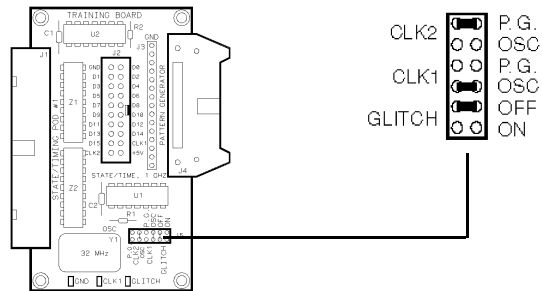
- 1 With the power off, connect Pod 1 to J1 on the Credit Card Board.



Note

If you are using a multi-card analyzer, connect pod 1 of the master board to the credit card board.

- 2 Set the jumpers on the credit card board as shown below.



Also See

Chapter 10 “Setting the Jumpers” for more information on the jumper settings of J5 on the credit card board.

Turn the Power On

- 3 Turn on the Agilent Technologies 16700 logic analysis system by flipping the power switch to ON.

Activate the Analyzer

- 4 Once the Main System window comes up on your screen, select the analyzer you have connected to the credit card board.
- 5 Select *Setup...* from the pop-up menu to activate that instrument.

Note

If you should ever connect the credit card board to a different analyzer, you must repeat steps 4 through 5 before going on to step 8.

Activate the Scope If you have an oscilloscope module, you'll need to create a RESET file for it also.

- 6** In the Main System window, choose the oscilloscope module, then select *Setup/Display...* from the pop-up menu.

Activate the Pattern Generator If you have a pattern generator module, you'll need to create a RESET file for it also.

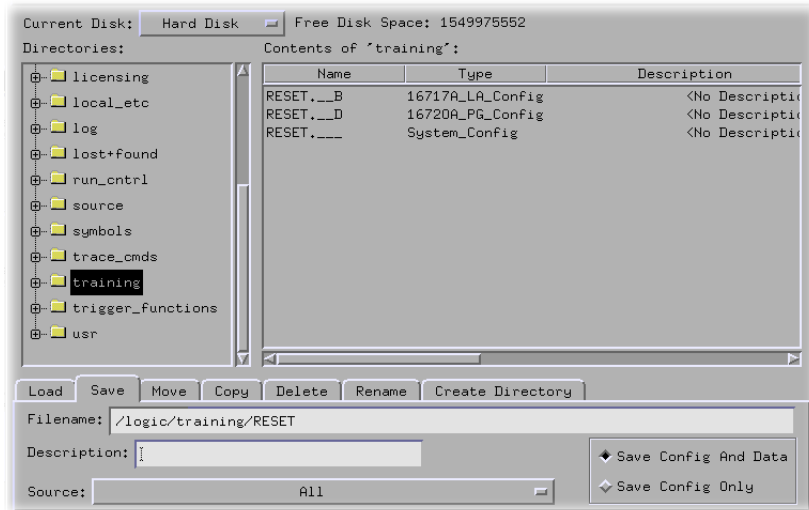
- 7** In the Main System window, choose the pattern generator module, then select *Setup...* from the pop-up menu.

Create the Training Directory **If you have already created the directory /logic/training/, go to step 12.**

- 8** Select the *File Manager* icon from the icon bar.
- 9** Select the *Create Directory* tab.
- 10** Under *Directories*, go to the directory */logic/*.
- 11** In the *New Directory name* field, enter 'training', and then select *Create Directory*.

Create the RESET File

- 12 Under *Directories*, go to the directory */logic/training/*, and select the *Save* tab.
- 13 In the *File Name* field, after */logic/training/*, enter RESET.



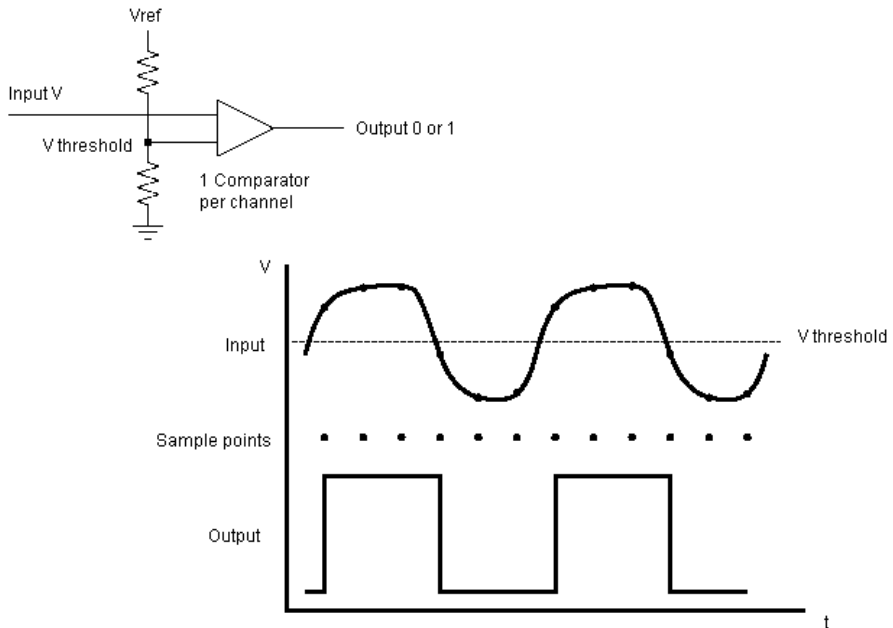
- 14 Select *Save* to save the default setting of all the measurement modules you are using. You will load this RESET file before each chapter to default all settings. If you connect the credit card board to a different analyzer instrument, you must start at step 4 to make a new RESET file.
- 15 Select *Close* to close the *File Manager* window.
- 16 Go to the Setup window for the logic analyzer and select *File*, and then *Close*.
- 17 If you activated the oscilloscope, go to the Oscilloscope window and select *File*, then *Close*.
- 18 If you activated the pattern generator, go to the Pattern Generator window and select *File*, then *Close*.

Introduction to Timing Analysis:
Trigger on an Edge

Introduction to Timing Analysis: Trigger on an Edge

Timing analysis with a logic analyzer is much like tracing a signal with a digital oscilloscope. The timing analyzer, like the oscilloscope, samples the signal at a rate determined by an internal clock.

The analyzer differs from the scope in that the analyzer uses one-bit comparators to output two signal levels, a logic 1 or 0. This allows the analyzer to have many more channels than the oscilloscope. With a large number of channels, the analyzer can show the timing relationship of logic between various signals. For example, you could look at the logic levels on control lines versus address lines or data lines.



In this chapter, and in chapter 4, you will make basic timing measurements. This chapter steps you through setting up the timing analyzer and bus labels, setting up the analyzer to trigger on an edge, and viewing the waveform.

In this chapter, you will learn how to:

- Set up the timing analyzer.
- Set up the bus labels
- Trigger on an edge.
- Run the analyzer and view the waveform.
- Use markers to make a timing measurement.
- Save your work.

Load the RESET Configuration File

The RESET file defaults all settings so that you can begin the exercises. You created the RESET file in Chapter 2.

1 Decide what to do.

- If you have just completed chapter 2, go to the next page.
- If you have reconnected the credit card board to a different analyzer, or if you have not created a RESET file, go to chapter 2 “Before You Begin.”
- If you have just completed an exercise other than chapter 2, go to step 2.

2 Select the *File Manager* icon from the icon bar.

3 Under *Directories*, go to the directory */logic/training/*.

4 Under *Contents of ‘training’*, select RESET file with the file description of the analyzer you have connected to the credit card board.

For example, if you are using an Agilent Technologies 16717A, you will select ‘RESET.__X’ with the file description of ‘16717A_LA_Config’.

5 Select the *Load* tab.

6 Select *Load*.

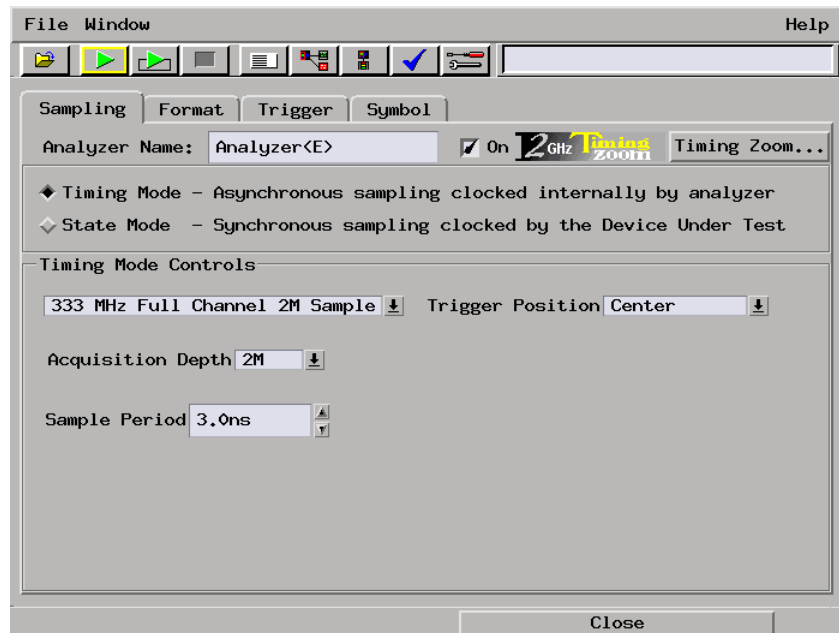
7 Select *Yes*.

8 Select *Close*.

Set Up the Timing Analyzer

Because the logic analyzer can capture dozens or even hundreds of signals, you need to organize the signals by grouping and labeling channels. Your goal is to create meaningful labels for groups of channels that represent the signals you are interested in. For example, you could group the channels used to probe the address bus under the label ADDR.

- 1 Select the analyzer you have connected to the credit card board.
- 2 Select *Setup...* from the pop-up menu to activate that instrument.
- 3 Select the *Sampling* tab.
- 4 Select *Timing Mode*.



Set Up the Bus Labels

- 1** Select the *Format* tab.

Now you will organize the data you are capturing by creating a label and assigning the channels of interest to that label.

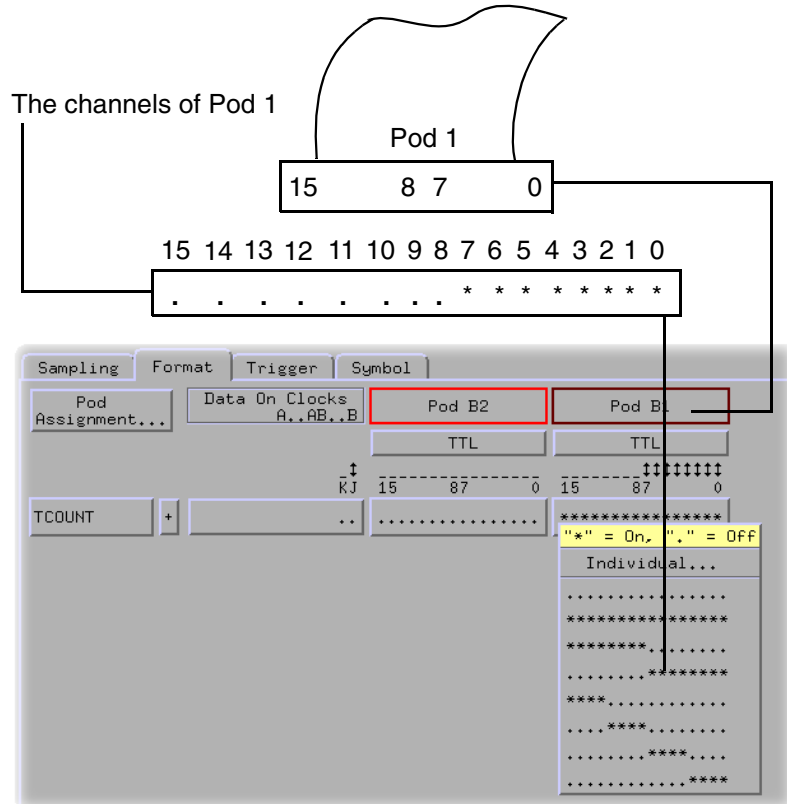
- 2** Select *Label1*, choose *Rename*.

- 3** Change the label name to *TCOUNT*.

TCOUNT is short for timing count, and represents the source of the signals.

- 4** To the far right of *TCOUNT*, select the field showing the 16 channels of pod 1.

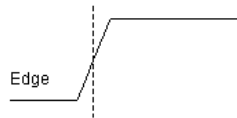
- 5 Assign the lower 8 channels of pod 1 to TCOUNT by choosing ".....*****".



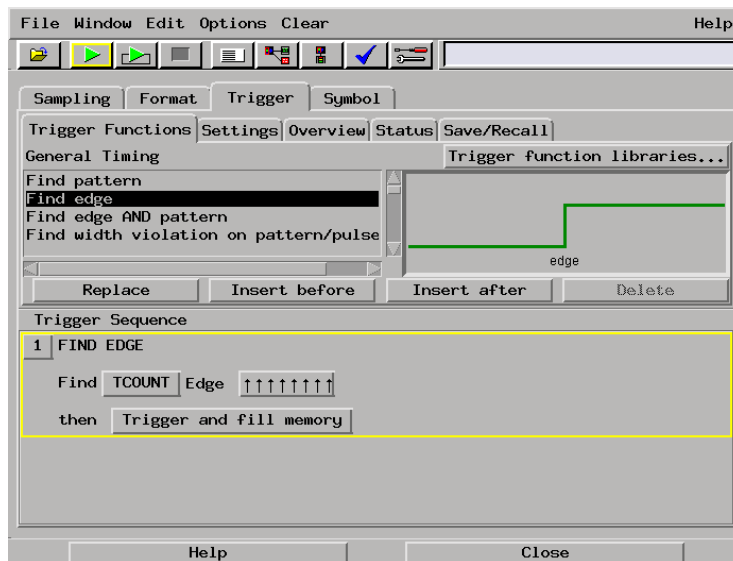
Define Trigger Conditions: Trigger on an Edge

A term that should be familiar to oscilloscope users is “triggering”. It is also used in logic analyzers, and is often called “trace point”. Unlike an oscilloscope, which starts the trace right after the trigger, a logic analyzer can show information prior to the trace point, which is known as negative time, as well as information after the trace point.

You can trigger the analyzer using specified events and edges. In this exercise, you will use the rising edge of bit 7.

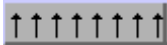


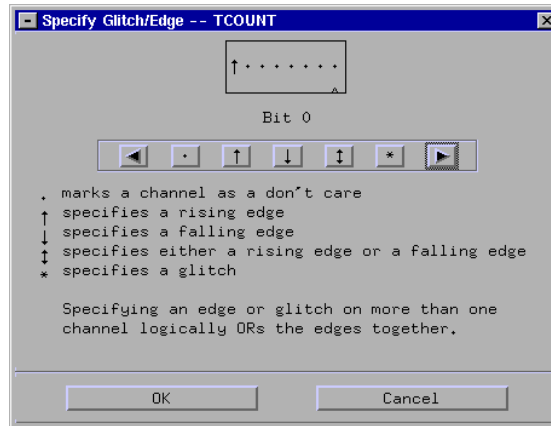
- 1 Select the *Trigger* tab.
- 2 Under the *Trigger Functions* tab, select 'Find edge'.



Note

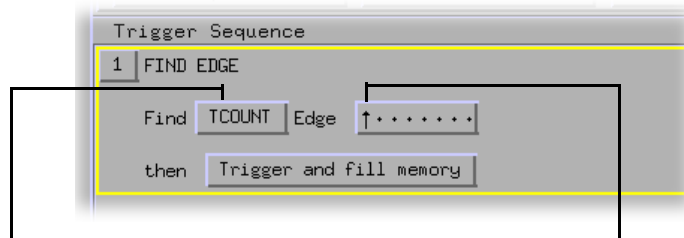
Trigger functions are predefined trigger sequences that can be used “as is” or that can be combined and modified for creating more complex trigger sequences.

- 3 Select *Replace* to replace the default trigger sequence with the 'Find edge' trigger function.
- 4 Under *Trigger Sequence 1*, select  .
- 5 Set Bit 7 as a rising edge and all other bits as don't care.



- 6 Select *OK*.

Your trigger should read:



This is the group of channels you are analyzing.

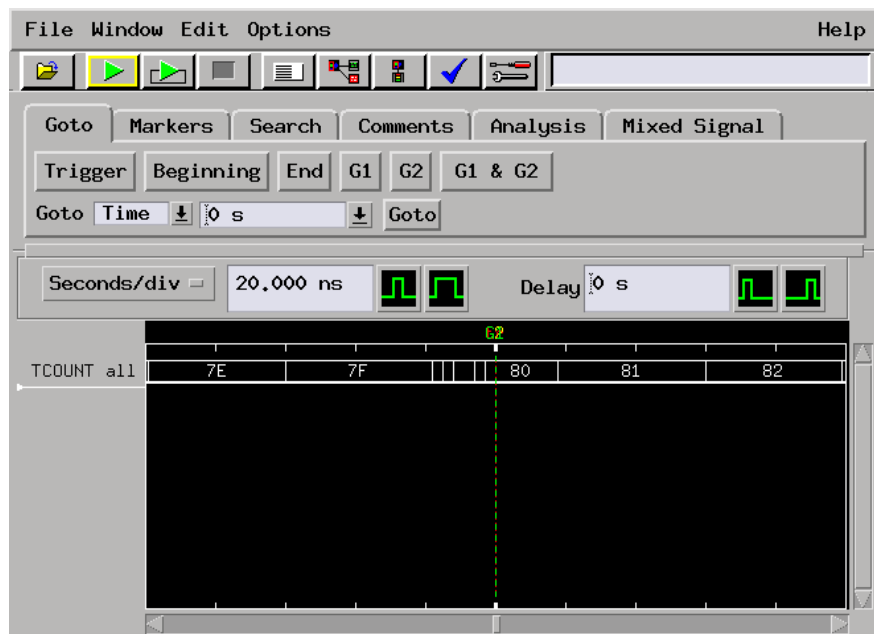
This is the rising edge of bit 7.

You have finished setting up the analyzer to trigger on the rising edge of bit 7. You are now ready to run the analyzer and capture data.

Run the Analyzer and View the Data

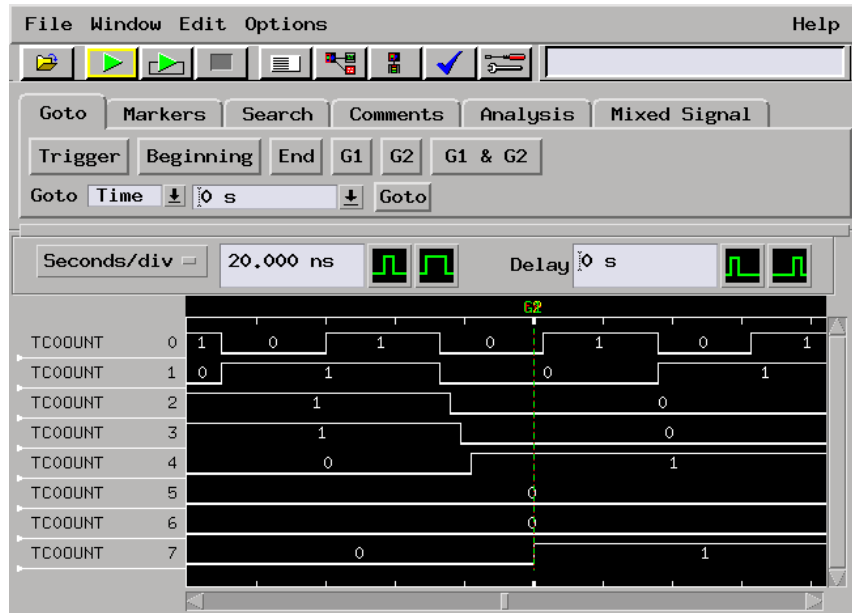
- 1 Select the *Run* icon to capture the data.
- 2 Select the *System* icon.
- 3 Select the slot with the analyzer you are using, and choose *Waveform* from the pop-up menu.
- 4 To the right of the *Seconds/div* enter 20 ns. This will zoom in on the waveform.

The data you captured is displayed in overlay mode, with the entire bus of data on one line. This allows you to tell the value of the bus at any particular moment.



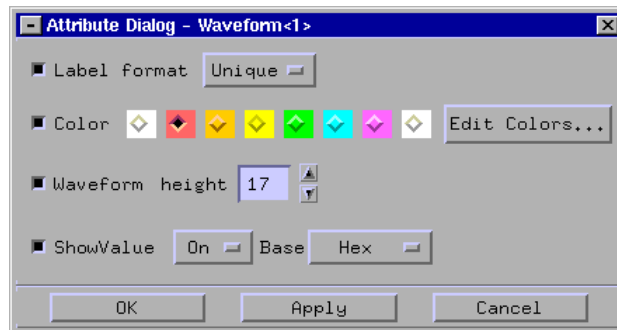
Let's expand the data so that you can look at all eight data lines.

- 5 Select *TCOUNT all*, and choose *Expand*.



Now that you can see the data on all 8 bits of the training board, let's change the color of data line TCOUNT 7 to red so that it stands out from the others.

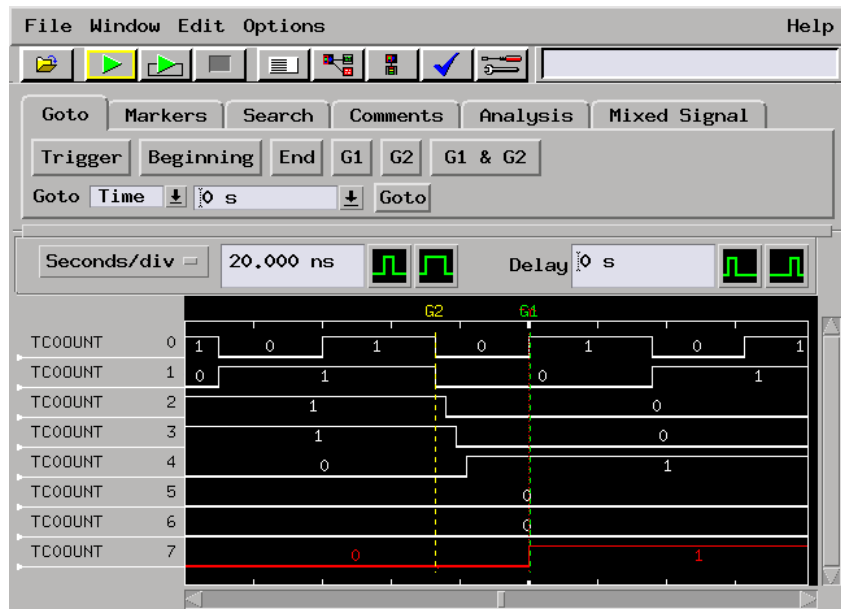
- 6 Choose *TCOUNT 7*, and select *Properties*.
- 7 To the right of *Color*, select the red box, then choose *OK*.



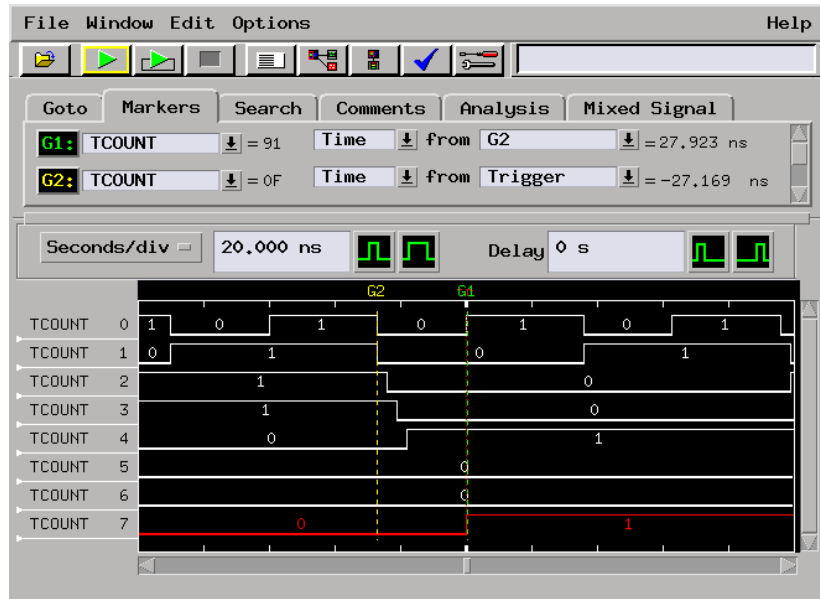
Use Markers to Make a Timing Measurement

You can use the global markers, G1 and G2, in the Waveform display to measure a time interval. The G1 and G2 global markers mark an instant in time that is global across all windows for all time correlated acquisition modules.

- 1 Drag marker *G2* to the falling edge of *TCOUNT 0* before the trigger.
- 2 *G1* should be on the rising edge on *TCOUNT 0*. If it is not, drag it there.



- 3 Select the *Markers* tab.
- 4 To the far-right of *G1*, select the down arrow and choose *G2*.
This will give you the time between markers *G1* and *G2*.



Save Your Work

Saving your work lets you reuse measurement setups. This is helpful if you make the same measurement often.

- 1** From the Waveform *File* menu, select *Save Configuration...*
- 2** Go to the directory */logic/training/*.
- 3** Select the *Save* tab.
- 4** In the *Filename* field, enter EDGE.
- 5** Select the *Save* button.
- 6** Select *Close*.
- 7** Close the Waveform window by selecting *File*, then *Close* from the menu bar.
- 8** Go back to the Setup window and select *Close*.

Lesson Summary

You have learned about basic timing analysis and how to make a basic timing measurement.

You did the following:

- ✓ Set up the timing analyzer.
- ✓ Set up the analyzer to trigger on an edge.
- ✓ Ran the analyzer and viewed the waveform.
- ✓ Used markers to make a timing measurement.
- ✓ Saved your work.

What's Next?

For more practice making basic timing measurements, go to chapter 4.

To learn about state analysis and how to make a basic state measurement, go to chapter 5.

To learn how to trigger the oscilloscope with the timing analyzer, go to chapter 8.

To learn how to use the pattern generator, go to chapter 9.

Lesson Summary

———— Verify Pulse Widths

Verify Pulse Widths

In this chapter, you will make a timing measurement to detect pulse width violations. Possible uses of this measurement are to test the minimum and maximum pulse limits, or to verify that all pulses controlling a mechanical device fall within specification.

This chapter steps you through setting up the timing analyzer and bus labels, setting up the analyzer to trigger on a pulse width that is either too narrow or too wide, and using markers to measure the width of the pulse once it has been captured in the waveform window.

In this chapter, you will learn how to:

- Set up the timing analyzer.
- Set up the bus labels.
- Trigger on a pulse width violation.
- Run the analyzer and measure the width of the pulse.
- Save your work.

Load the RESET Configuration File

The RESET file defaults all settings so that you can begin the exercises. You created the RESET file in Chapter 2.

1 Decide what to do.

- If you have just completed chapter 2, go to the next page.
- If you have reconnected the credit card board to a different analyzer, or if you have not created a RESET file, go to chapter 2 “Before You Begin.”
- If you have just completed an exercise other than chapter 2, go to step 2.

2 Select the *File Manager* icon from the icon bar.

3 Under *Directories*, go to the directory */logic/training/*.

4 Under *Contents of ‘training’*, select the RESET file with the file description of the analyzer you have connected to the credit card board.

For example, if you are using an Agilent Technologies 16717A, you will select the file ‘RESET.__X’ with the file description of ‘16717A_LA_Config’.

5 Select the *Load* tab.

6 Select *Load*.

7 Select *Yes*.

8 Select *Close*.

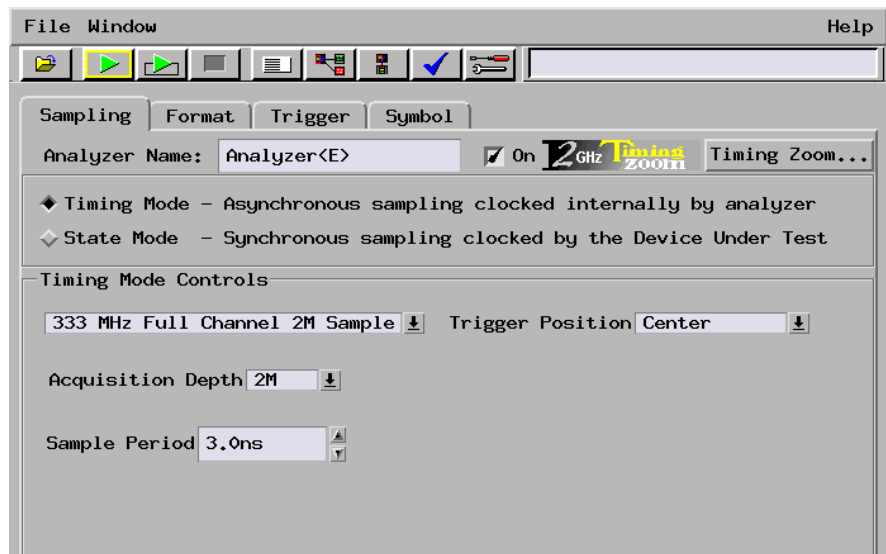
Set Up the Timing Analyzer

First we will set up the timing analyzer to capture data on bit 1 of the credit card board.

Also See

Chapter 3 “Introduction to Timing Analysis: Trigger on an Edge”, for more information on timing analysis.

- 1 Select the analyzer you have connected to the credit card board.
- 2 Select *Setup...* from the pop-up menu to activate that instrument.
- 3 Select the *Sampling* tab.
- 4 Select *Timing Mode*.



Set Up the Bus Labels

- 1 Select the *Format* tab.

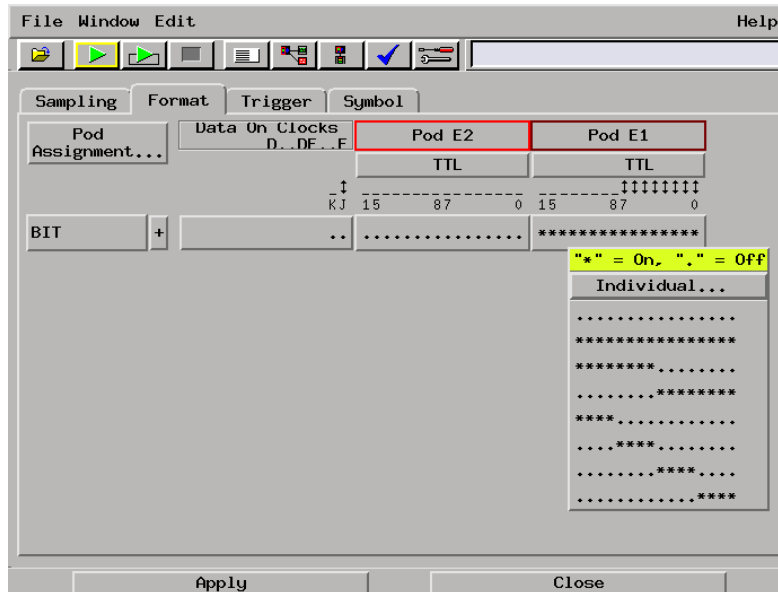
Now you will organize the data you are capturing by creating a label and assigning the channels of interest to that label.

- 2 Select *Label1*, select *Rename*.

- 3 Change the label name to BIT.

BIT represents the source of the signals.

- 4 To the far right of *BIT* select the field showing the 16 channels of pod 1.



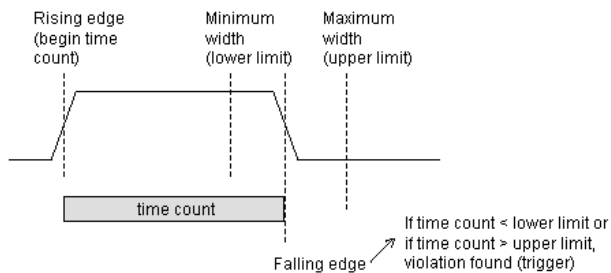
- 5 Select *Individual...* from the pop-up menu.

- 6 Choose channel one to assign it to *BIT*,
- 7 Then select *OK*.

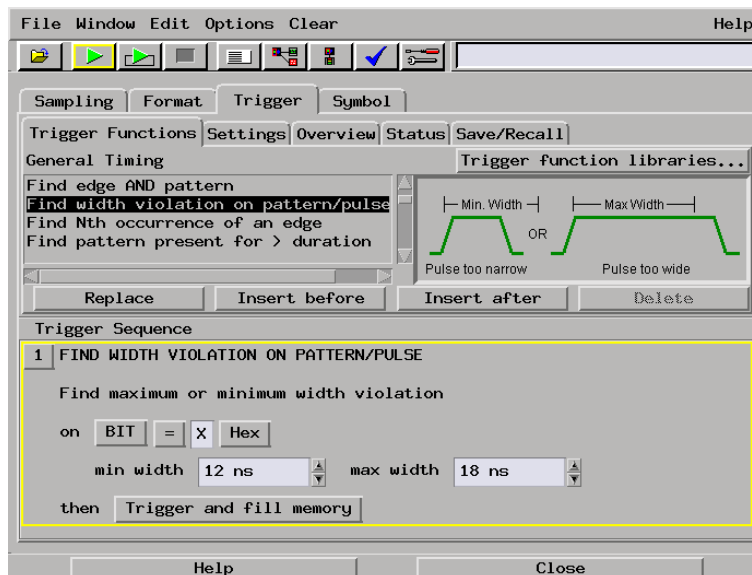


Define the Trigger Conditions: Trigger on a Pulse Width Violation

Setting up the trigger specification for verifying pulse widths would be a complex measurement to set up by hand. This is where trigger macros help out. Macros are pre-defined trigger specifications that you can modify for your measurement.



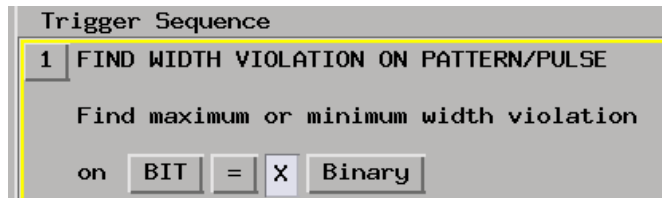
- 1 Select the *Trigger* tab.
- 2 Under the *Trigger Functions* tab, select 'Find width violation on pattern/pulse'.



- 3 Select *Replace* to replace the default trigger sequence.

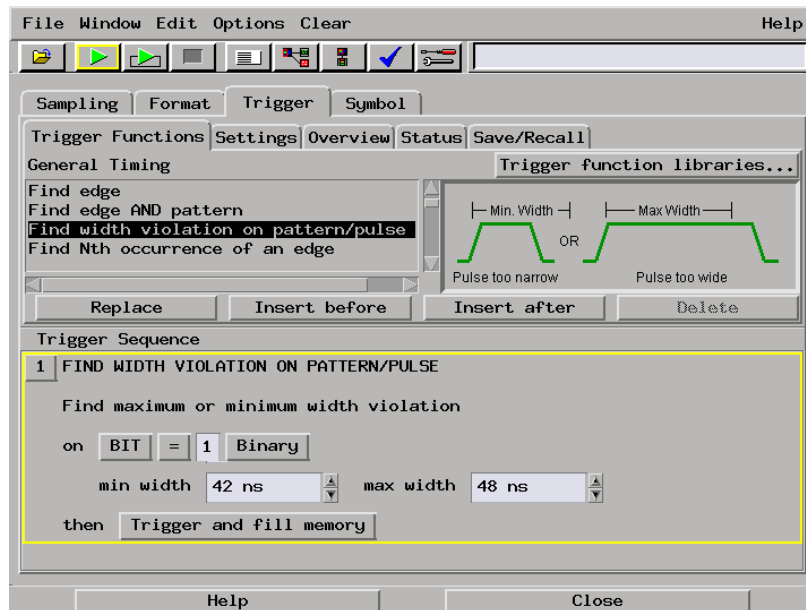
Next you will define what you want to use for a trigger. Because we are looking for a pulse width violation, we will check the width of all high signals.

- 4 Under the *Trigger Sequence 1*, select *Hex*, then select *Binary* from the pop-up menu.
- 5 Select the field to the left of *Binary* and enter 1.



Now you will set the values for the width violation.

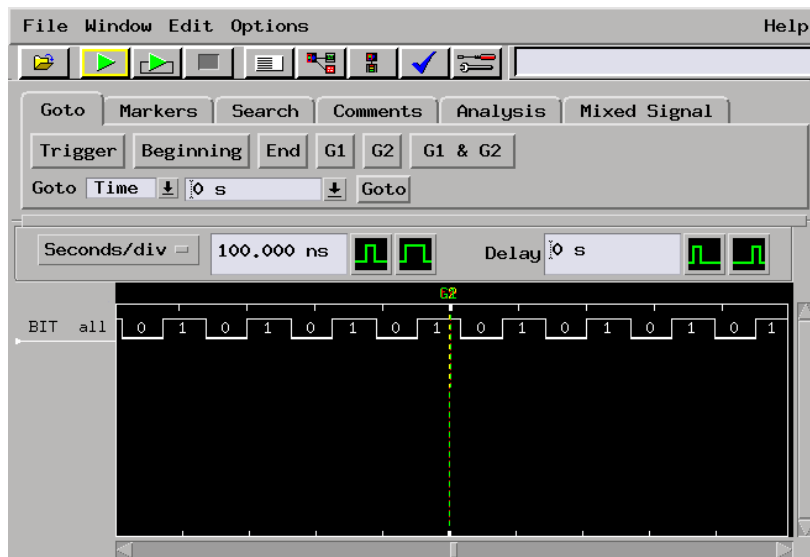
- 6 Set the *min width* to 42ns.
- 7 Set the *max width* to 48ns.



Run the Analyzer to Verify Pulse Widths

If the analyzer triggers, it has detected a violation.

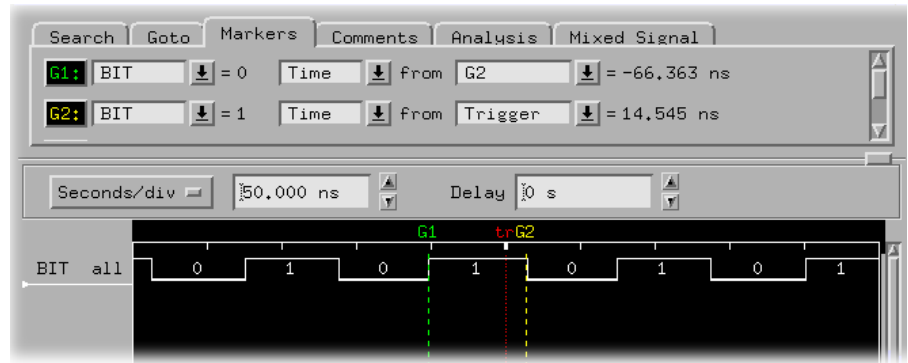
- 1 Select the *Run* icon.
- 2 Select the *System* icon.
- 3 Select the slot with the analyzer you are using, and select *Waveform* from the pop-up menu.



- 4 To the right of the *Seconds/div* field enter 50 ns. This will zoom in on the waveform.

Now you'll measure how wide the pulse width is using Markers.

- 5 Select the *Markers* tab.
- 6 To the far right of *G1*, select the down arrow after *Time from Trigger*, and select *G2*.
- 7 Move *G1* to the nearest rising edge before the trigger.
- 8 Move *G2* to the nearest falling edge after the trigger.



This will give you the pulse width between markers G1 and G2.

Save Your Work

- 1** From the *File* menu, select *Save Configuration...*
- 2** Go to the directory */logic/training/*.
- 3** Select the *Save* tab.
- 4** In the *Filename* field, enter WIDTH.
- 5** Select the *Save* button.
- 6** Close the Waveform window by selecting *File*, then *Close* from the menu bar.
- 7** Go back to the Setup window and select *Close*.

Lesson Summary

You have learned how to verify pulse widths.

You did the following:

- ✓ Set up the timing analyzer.
- ✓ Triggered on a pulse width violation.
- ✓ Ran the analyzer and viewed the waveform.
- ✓ Used markers to measure the width of the pulse.
- ✓ Saved your work.

What's Next?

To learn about state analysis and how to make a basic state measurement, go to chapter 5.

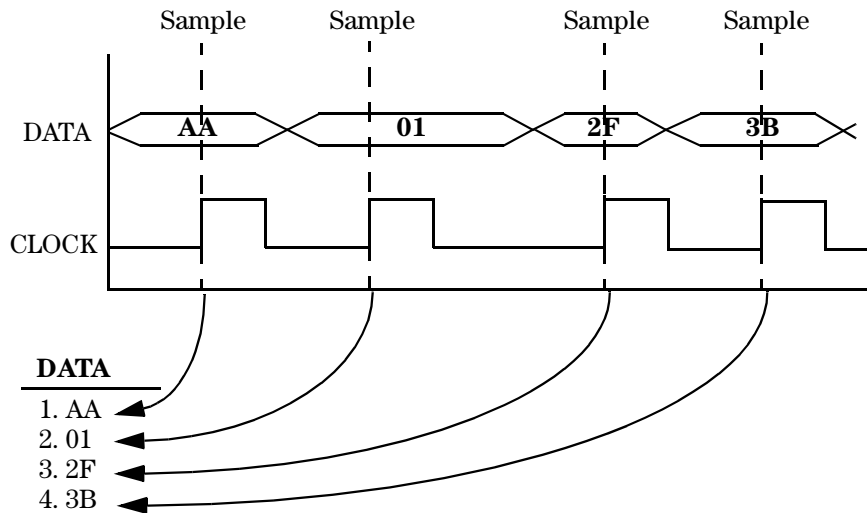
To learn how to trigger the oscilloscope with the timing analyzer, go to chapter 8.

To learn how to use the pattern generator, go to chapter 9.

Introduction to State Analysis:
Trigger on an Event

Introduction to State Analysis: Trigger on an Event

If you've never used a state analyzer, you may think it's a complex instrument that would take much time to master. Actually, the state analyzer is not any more difficult to understand than a timing analyzer. The major difference between a timing analyzer and a state analyzer is the source of the sample clock. While the timing analyzer samples at regular intervals using the internal clock, the state analyzer samples when you tell it to use an external clock. Each time the state analyzer receives a state clock pulse, the analyzer samples and stores the logic state of the system under test.



In this chapter, and in chapters 6 and 7, you will make basic state measurements. This chapter steps you through setting up the state analyzer and bus labels, setting up the analyzer to trigger on an event and store a range of values, and viewing the listing.

In this chapter, you will learn how to:

- Set up the state analyzer.
- Set up the bus labels.
- Trigger on an event and store a range of values.
- Run the analyzer and view the listing.
- Search the listing.
- Save your work.

Load the RESET Configuration File

The RESET file defaults all settings so that you can begin the exercises. You created the RESET file in Chapter 2.

1 Decide what to do.

- If you have just completed chapter 2, go to the next page.
- If you have reconnected the credit card board to a different analyzer, or if you have not created a RESET file, go to chapter 2 “Before You Begin.”
- If you have just completed an exercise other than chapter 2, go to step 2.

2 Select the *File Manager* icon from the icon bar.

3 Under *Directories*, go to the directory */logic/training/*.

4 Under *Contents of ‘training’*, select the RESET file with the file description of the analyzer you have connected to the credit card board.

For example, if you are using an Agilent Technologies 16717A, you will select the file ‘RESET.__X’ with the file description of ‘16717A_LA_Config’.

5 Select the *Load* tab.

6 Select *Load*.

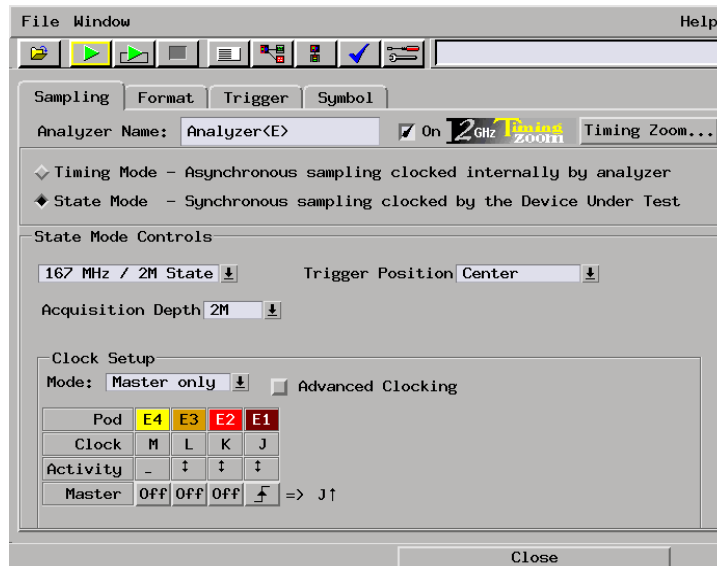
7 Select *Yes*.

8 Select *Close*.


Set Up the State Analyzer

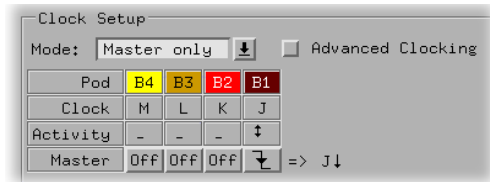
First you must change the analyzer type from timing to state. Changing the analyzer type to state allows you to set up the clock as well as set up more complex triggers using ranges and combinations of values.

- 1 Select the analyzer you have connected to the credit card board.
- 2 Select *Setup...* from the pop-up menu to activate that instrument.
- 3 Select the *Sampling* tab.
- 4 Select *State Mode*.



Each pod has one clock channel. The clock channel on pod 1 is J. We will set J to sample data on the falling edge.

- 5 Select the  under *J*, and choose *Falling Edge*.



Set Up the Bus Labels

- 1 Select the *Format* tab.

Now you will organize the data you are capturing by creating a label and assigning the channels of interest to that label.

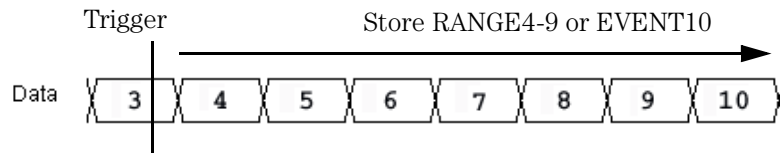
- 2 Select *Label1*, then choose *Rename*.
3 Change the label name to *SCOUNT*.

SCOUNT is short for state count and represents the source of the signals.

- 4 To the far right of *SCOUNT*, select the field showing the 16 channels of pod 1.

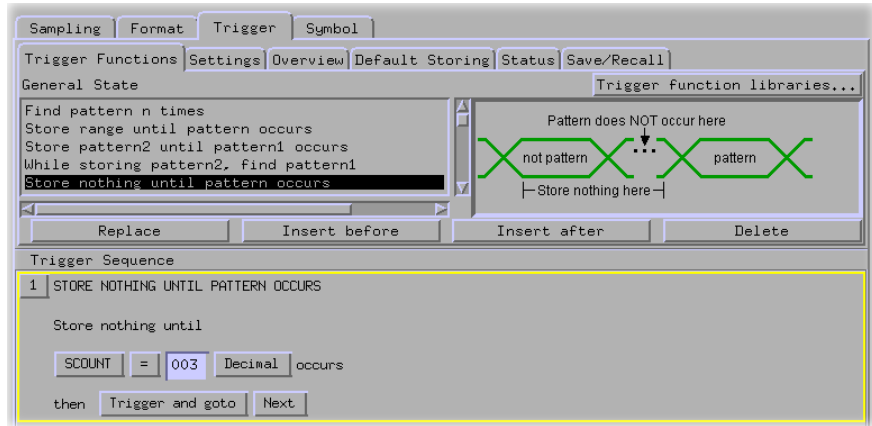
Define the Trigger Conditions: Trigger on an Event

A state analyzer has “sequence levels” that let you qualify data storage. In this exercise, you will trigger on the pattern 3, and then only store the range 4-9 and pattern 10 until the analyzer's memory is full.



- 1 Select the *Trigger* tab.
- 2 Under the *Trigger Functions* tab, select 'Store nothing until pattern occurs'.
- 3 Select *Replace* to replace the default trigger sequence with the 'Store nothing until patter occurs' trigger function.
- 4 In the *Trigger Sequence* box 1, choose *Hex*, then select *Decimal* from the pop-up menu.
- 5 Select the field to the right of *SCOUNT* =, and enter 003.

- 6 Select *Trigger* and fill memory.
- 7 Select *Trigger*, then choose *Trigger* and goto.



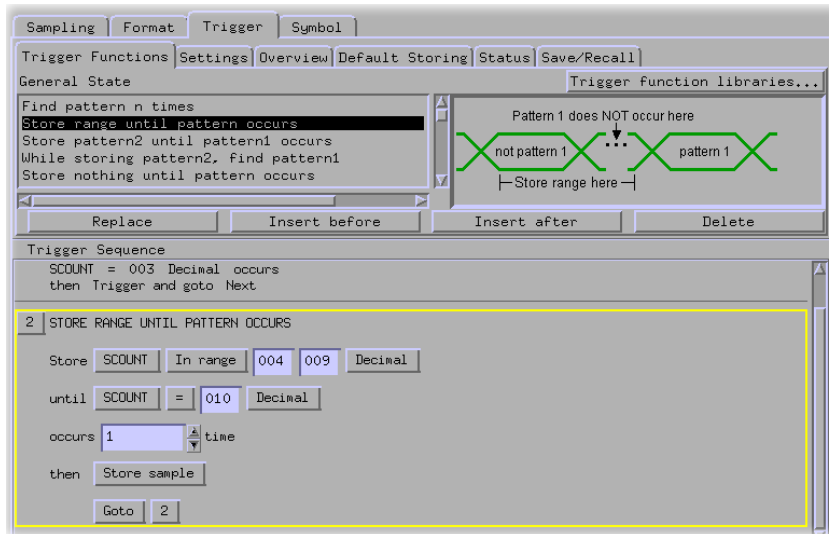
- 8 Under the *Trigger Functions* tab, select 'Store range until pattern occurs'.
- 9 Select *Insert after* to insert the 'Store range until patter occurs' trigger function after *Trigger Sequence 1*.
- 10 In the *Trigger Sequence 2*, choose *Hex*, then select *Decimal* from the pop-up menu. Do this for both instances of Hex.
- 11 Select the first field to the right of *Store SCOUNT In range*, and enter 004.
- 12 Select the field to the right of *004* and enter 009.
- 13 Select the field to the right of *until SCOUNT =*, and enter 010.

Chapter 5: Introduction to State Analysis: Trigger on an Event

Define the Trigger Conditions: Trigger on an Event

14 Select *Next*, then select 2.

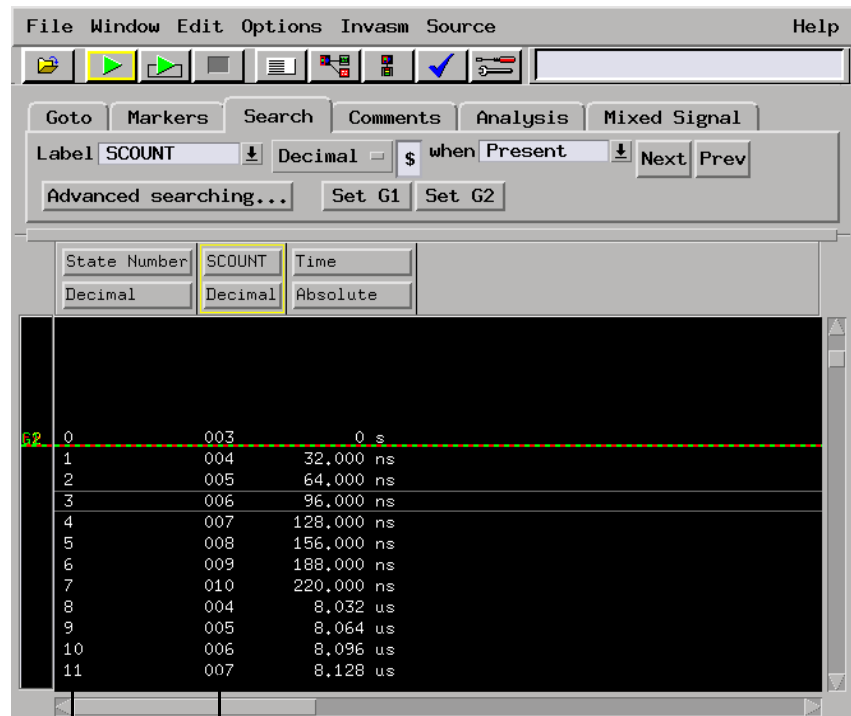
You may need to enlarge the window to see the *Next* button.



Your trigger sequence should look like the one above.

Run the Analyzer and View the Listing

- 1 Select the *Run* icon to capture the data.
- 2 Select the *System* icon.
- 3 Select the slot with the analyzer you are using, and select *Listing...*
- 4 Under *SCOUNT* select *Decimal*.



These line numbers show the locations of the data in the logic analyzers memory.

This is the state data you captured from the credit card board.

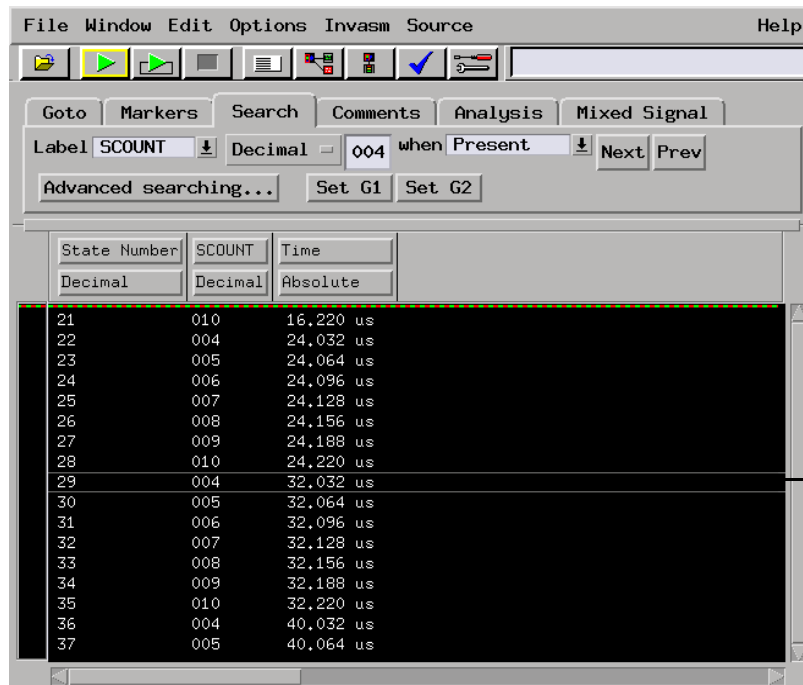
Chapter 5: Introduction to State Analysis: Trigger on an Event

Run the Analyzer and View the Listing

You set up the analyzer to trigger on 3 and store the range 4-9 and 10 until the analyzer's memory becomes full. Because the credit card board counts from 0 to 255 repetitively, there are many occurrences of "4-9, 10." Now you will search through the listing for the beginning of the stored range.

- 5 Select the field to the right of *Decimal*, enter 004.
- 6 Select the *Next* button to find the first occurrence of RANGE4-9.
- 7 Select the *Next* button a few more times.

Notice the line numbers are increasing and that the trigger point is no longer in view.



The value 004 that you are searching the listing for is always displayed inside these lines.

Save Your Work

- 1** From the Listing *File* menu, select *Save Configuration...*
- 2** Go to the directory */logic/training/*.
- 3** Select the *Save* tab.
- 4** In the *Filename* field, after the path */logic/training/*, enter **EVENT**.
- 5** Select the *Save* button.
- 6** Select *Close*.
- 7** Close the Listing window by selecting *File*, then *Close* from the menu bar.
- 8** Go back to the Setup window and select *Close*.

Lesson Summary

You have learned about state analysis and how to make a state measurement.

You did the following:

- ✓ Set up the state analyzer.
- ✓ Triggered on an event and stored a range of values.
- ✓ Ran the analyzer and viewed the listing.
- ✓ Saved your work.

What's Next?

For more practice making basic state measurements, go to chapters 6 and 7.

To learn about timing analysis and how to make a basic timing measurement, go to chapter 3.

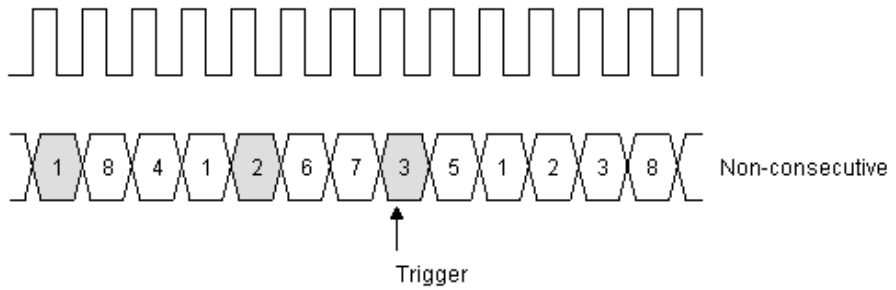
To learn how to trigger the oscilloscope with the timing analyzer, go to chapter 8.

To learn how to use the pattern generator, go to chapter 9.

Trigger on a Sequence of Events

Trigger on a Sequence of Events

With the state analyzer's selective storage abilities, you can store only a portion of the data. In this exercise you will store a non-consecutive sequence of values before triggering the logic analyzer. This will involve setting up multiple levels of trigger conditions.



This chapter steps you through setting up the state analyzer and bus labels, setting up the analyzer to trigger on a sequence of events, and viewing the listing.

In this chapter, you will learn how to:

- Set up the state analyzer.
- Set up the bus labels.
- Trigger on a sequence of events.
- Run the analyzer and view the listing.
- Save your work.

Load the RESET Configuration File

The RESET file defaults all settings so that you can begin the exercises. You created the RESET file in Chapter 2.

1 Decide what to do.

- If you have just completed chapter 2, go to the next page.
- If you have reconnected the credit card board to a different analyzer, or if you have not created a RESET file, go to chapter 2 “Before You Begin.”
- If you have just completed an exercise other than chapter 2, go to step 2.

2 Select the *File Manager* icon from the icon bar.

3 Under *Directories*, go to the directory */logic/training/*.

4 Under *Contents of ‘training’*, select the RESET file with the file description of the analyzer you have connected to the credit card board.

For example, if you are using an Agilent Technologies 16717A, you will select the file ‘RESET.__X’ with the file description of ‘16717A_LA_Config’.

5 Select the *Load* tab.

6 Select *Load*.

7 Select *Yes*.

8 Select *Close*.

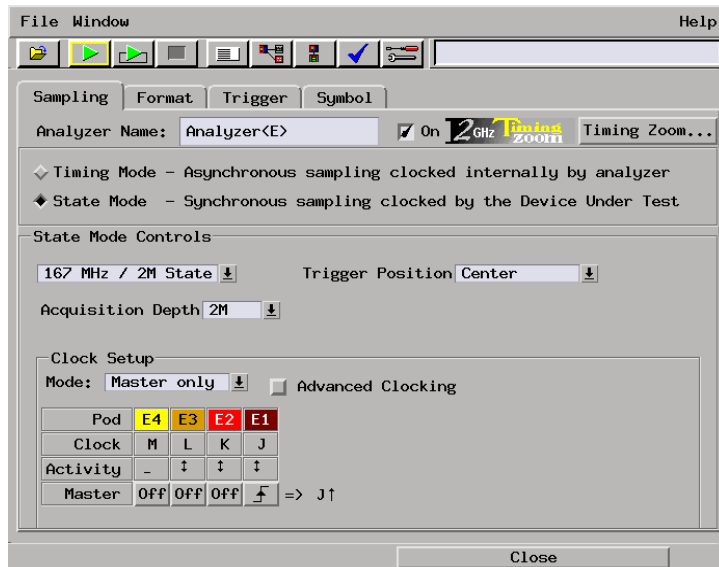
Set Up the State Analyzer

First you must change the analyzer type from timing to state.


Also See

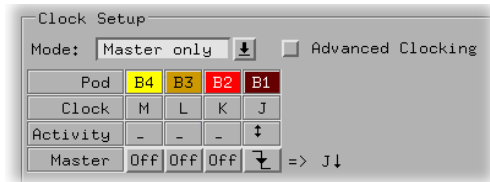
Chapter 5 “Introduction to State Analysis: Trigger on an Event”, for more information on the state analyzer.

- 1 Select the analyzer you have connected to the credit card board.
- 2 Select *Setup...* from the pop-up menu to activate that instrument.
- 3 Select the *Sampling* tab.
- 4 Select *State Mode*.



Each pod has one clock channel. The clock channel on pod 1 is J. We will set J to sample data on the falling edge.

- 5 Select the  under *J*, and select *Falling Edge*.



Set Up the Bus Labels

- 1 Select the *Format* tab.

Now you will organize the data you are capturing by creating a label and assigning the channels of interest to that label.

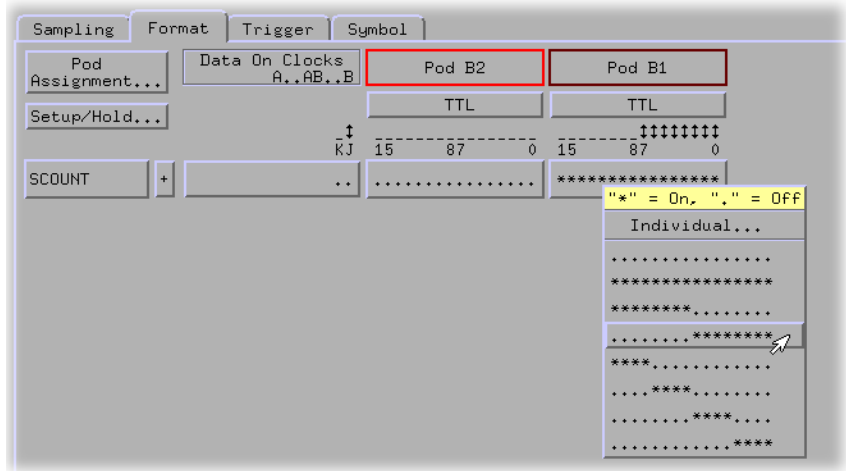
- 2 Select *Label1*, choose *Rename*.

- 3 Change the label name to *SCOUNT*.

SCOUNT is short for state count and represents the source of the signals.

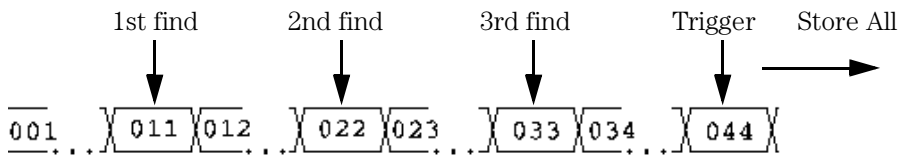
- 4 To the far right of *SCOUNT*, select the field showing the 16 channels of pod 1.

- 5 Assign the lower 8 channels of pod 1 to SCOUNT by choosing the “.....*****” selection in the pop-up menu.



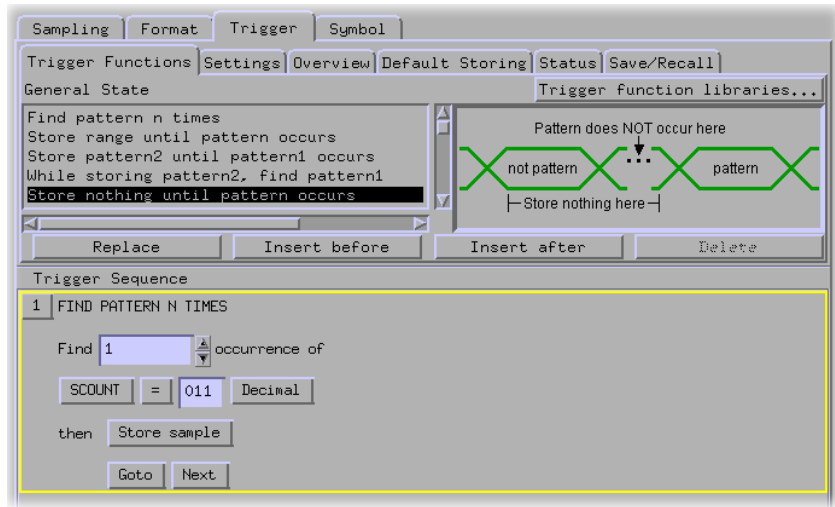
Trigger on a Sequence of Events

Now you will set up the state analyzer to find a sequence of events, trigger on the last event, and then store any state. This will take four sequence levels. The first level will find 11, the second 22, the third 33, and the fourth level will trigger on the occurrence of 44. The fifth level will be used to store all states after the trigger point until the analyzer's memory is full.



- 1 Select the *Trigger* tab.
- 2 Under the *Trigger Functions* tab, select 'Store nothing until pattern occurs'.
- 3 Select *Replace* to replace the default trigger sequence with the 'Store nothing until patter occurs' trigger function.
- 4 In the *Trigger Sequence 1*, choose *Hex*, then select *Decimal* from the pop-up menu.
- 5 Select the field to the right of *SCOUNT* =, and enter 011.

- 6 Select *Trigger and fill memory*, then choose *Insert ACTION*.
- 7 Select *Store*, then choose *Store sample*.
- 8 Below *Store sample*, select *Trigger then fill memory*, then choose *Goto*.

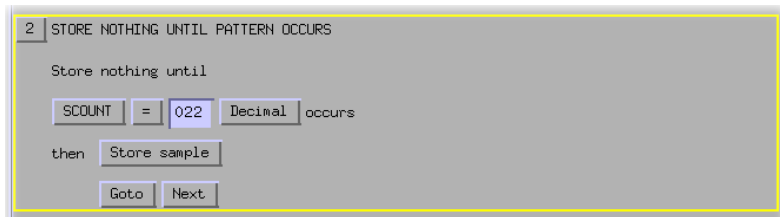


To tell the analyzer to find the rest of the sequence 022, 033, and 044 before triggering, we will set up three more sequence levels similar to the one finding 011.

- 9 On the button bar above *Trigger Sequence 1*, select *Insert after* to insert a *Trigger Sequence 2*.
- 10 In the *Trigger Sequence 2*, choose *Hex*, then select *Decimal* from the pop-up menu.
- 11 In the *Trigger Sequence 2*, select the field to the right of *SCOUNT =*, and enter 022.

12 Select *Goto*, then choose *Insert ACTION*.

13 Select *Store*, then choose *Store sample*.



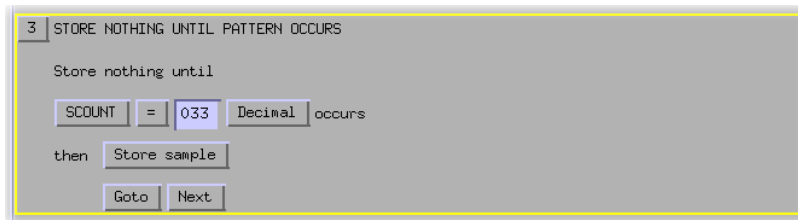
14 On the button bar above *Trigger Sequence 1*, select *Insert after* to insert a Trigger Sequence 3.

15 In the *Trigger Sequence 3*, choose *Hex*, then select *Decimal* from the pop-up menu.

16 In the *Trigger Sequence 3*, select the field to the right of *SCOUNT =*, and enter 033.

17 Select *Goto*, then choose *Insert ACTION*.

18 Select *Store*, then choose *Store sample*.

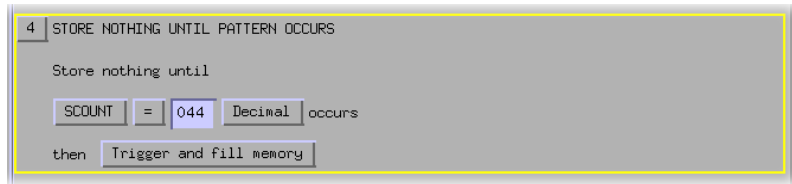


19 On the button bar above *Trigger Sequence 1*, select *Insert after* to insert a Trigger Sequence 4.

20 In the *Trigger Sequence 4*, choose *Hex*, then select *Decimal* from the pop-up menu.

21 In the *Trigger Sequence 4*, select the field to the right of *SCOUNT =*, and enter 044.

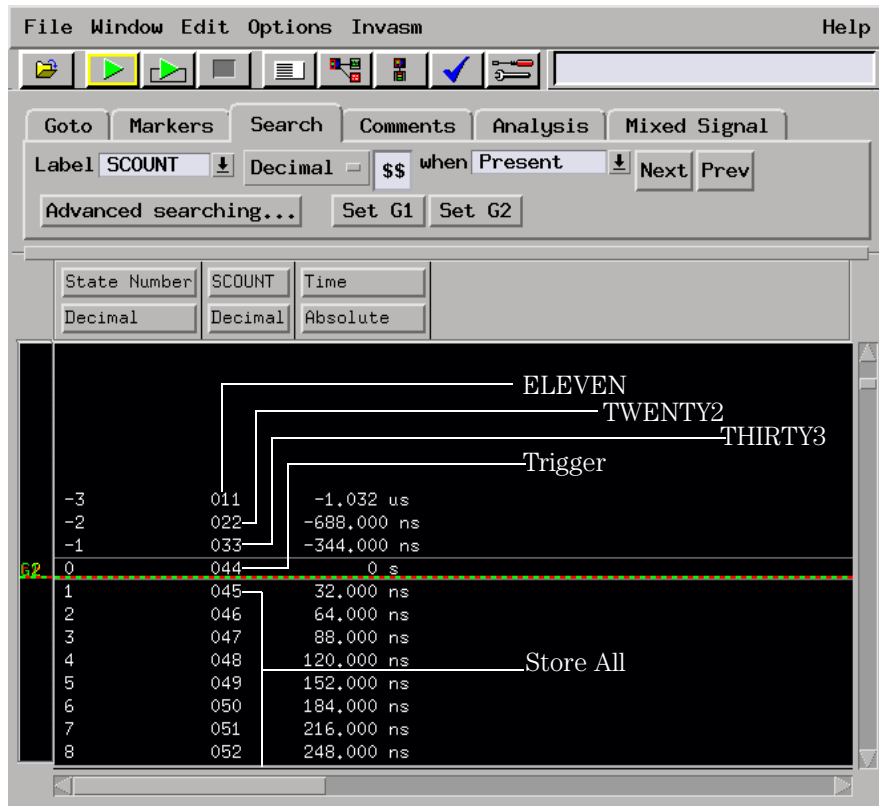
22 Select *Goto* and choose *Trigger*, then *Trigger and fill memory*.



Run the State Analyzer and View the Listing

- 1 Select the *Run* icon to capture the data.
- 2 Select the *System* icon.
- 3 Select the slot with the analyzer you are using, and select *Listing...* from the pop-up menu.
- 4 Select the *Search* tab.
- 5 Under *SCOUNT*, choose *Hex*, then select *Decimal* from the pop-up menu.

Look for the sequence of events before the trigger point.



Save Your Work

- 1** From the Listing *File* menu, select *Save Configuration...*
- 2** Go to the directory */logic/training/*.
- 3** Select the *Save* tab.
- 4** In the *Filename* field, enter SEQUENCEEVENT.
- 5** Select the *Save* button.
- 6** Close the *Listing* window by selecting *File*, then *Close* from the menu bar.
- 7** Go back to the Setup window and select *Close*.

Lesson Summary

You have learned how to make a more advanced state measurement.

You did the following:

- ✓ Set up the state analyzer.
- ✓ Triggered on a sequence of events.
- ✓ Ran the analyzer and viewed the listing.
- ✓ Saved your work.

What's Next?

For more practice making basic state measurements, go to chapter 7.

To learn about timing analysis and how to make a basic timing measurement, go to chapter 3.

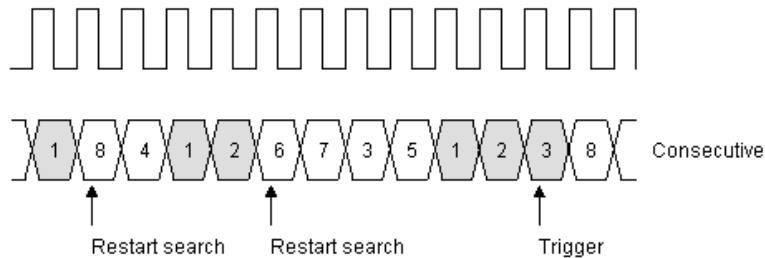
To learn how to trigger the oscilloscope with the timing analyzer, go to chapter 8.

To learn how to use the pattern generator, go to chapter 9.

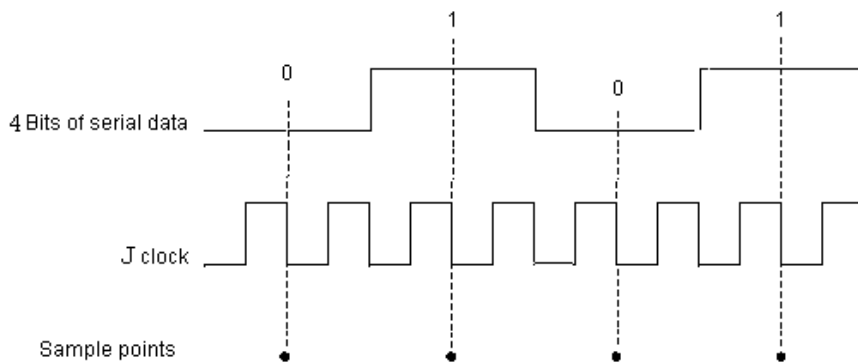
Trigger on a 4 Bit Serial Pattern

Trigger on a 4 Bit Serial Pattern

To trigger on a 4 bit serial pattern, the analyzer looks for a consecutive sequence of events. Only then will the analyzer trigger.



For this exercise, the sequence of events will be '0101'. The analyzer will not trigger if it does not find '0101'.



This chapter steps you through setting up the state analyzer and bus labels, setting up the analyzer to trigger on a 4-bit serial pattern, and viewing the states in the listing window.

In this chapter, you will learn how to:

- Set up the state analyzer.
- Set up the bus labels.
- Trigger on a 4-bit serial pattern.
- Run the analyzer and view the listing.
- Save your work.

Load the RESET Configuration File

The RESET file defaults all settings so that you can begin the exercises. You created the RESET file in Chapter 2.

1 Decide what to do.

- If you have just completed chapter 2, go to the next page.
- If you have reconnected the credit card board to a different analyzer, or if you have not created a RESET file, go to chapter 2 “Before You Begin.”
- If you have just completed an exercise other than chapter 2, go to step 2.

2 Select the *File Manager* icon from the icon bar.

3 Under *Directories*, go to the directory */logic/training/*.

4 Under *Contents of ‘training’*, select the RESET file with the file description of the analyzer you have connected to the credit card board.

For example, if you are using an Agilent Technologies 16717A, you will select the file ‘RESET.__X’ with the file description of ‘16717A_LA_Config’.

5 Select the *Load* tab.

6 Select *Load*.

7 Select *Yes*.

8 Select *Close*.

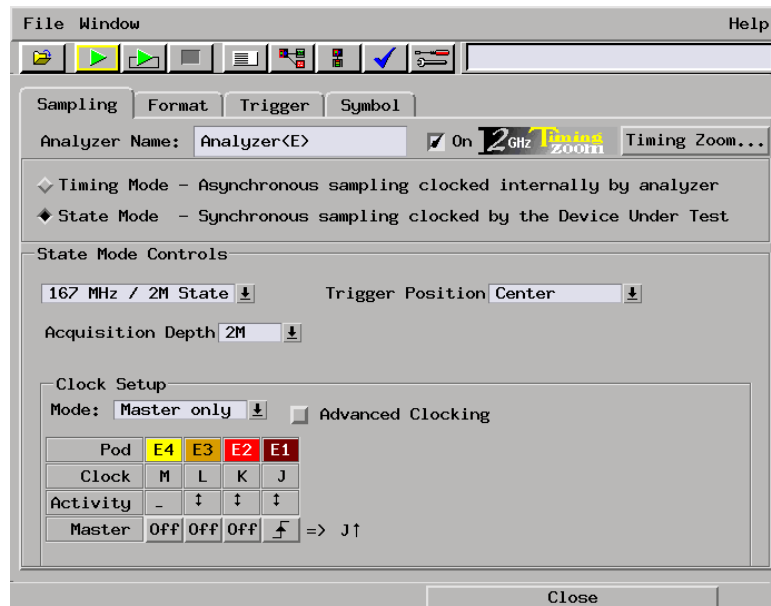
Set Up the State Analyzer

First you must change the analyzer type from timing to state.

Also See

Chapter 5 “Introduction to State Analysis: Trigger on an Event”, for more information on the state analyzer.

- 1 From the *System* menu, select the analyzer you have connected to the credit card board.
- 2 Select *Setup...* from the pop-up menu to activate that instrument.
- 3 Select the *Sampling* tab.
- 4 Select *State Mode*.

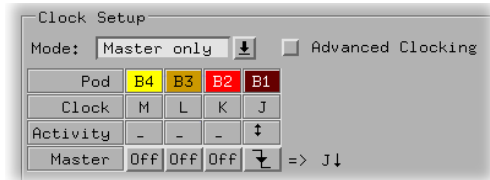


Chapter 7: Trigger on a 4 Bit Serial Pattern

Set Up the State Analyzer

Each pod has one clock channel. The clock channel on pod 1 is J. We will set J to sample data on the falling edge.

- 5 Select the  under J, and select *Falling Edge* from the pop-up menu.



Set Up the Bus Labels

- 1 Select the *Format* tab.

Now you will organize the data you are capturing by creating a label and assigning the channels of interest to that label.

- 2 Select *Label1*, then choose *Rename*.

- 3 Change the label name to BIT.

BIT represents the source of the signal.

- 4 To the far right of *BIT*, select the field showing the 16 channels of pod 1.

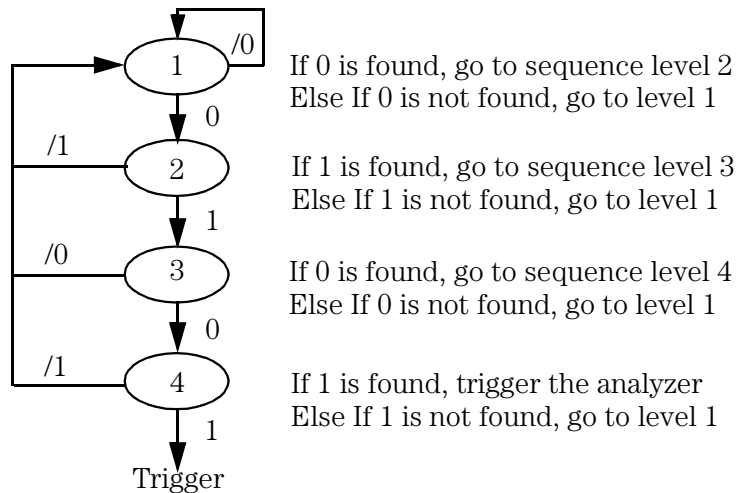
- 5 Select *Individual...* from the pop-up menu.

- 6 Select channel zero to assign it to BIT, then select *OK* to close the BIT window.



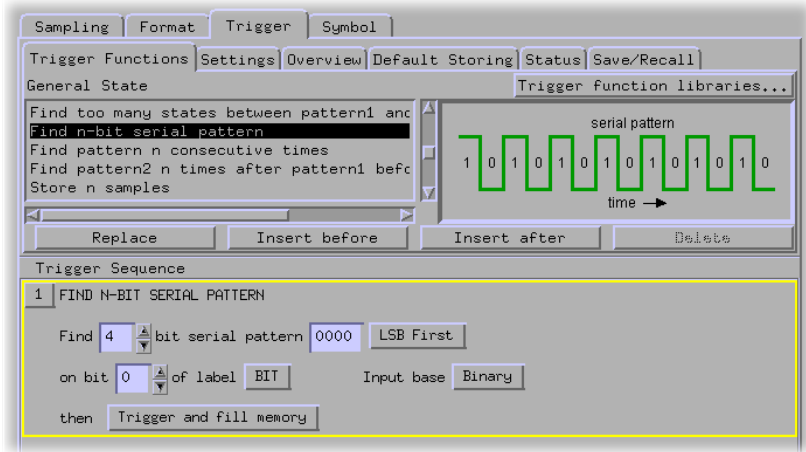
Define the Trigger Conditions: Trigger on a 4-bit Serial Pattern

A serial pattern is a consecutive sequence of events. If the events do not occur in order, the state analyzer will never trigger.

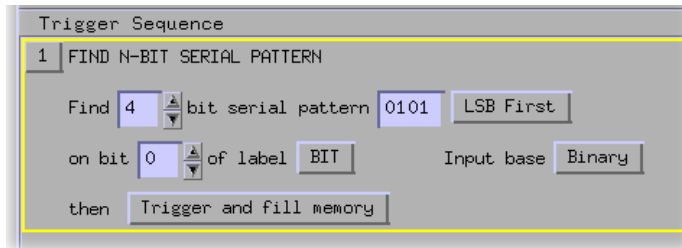


- 1** Select the *Trigger* tab.
- 2** Under the *Trigger Functions* tab, scroll to and select 'Find n-bit serial pattern'.

- 3 Select *Replace* to replace the default trigger sequence with the 'Find n-bit serial pattern' trigger function.

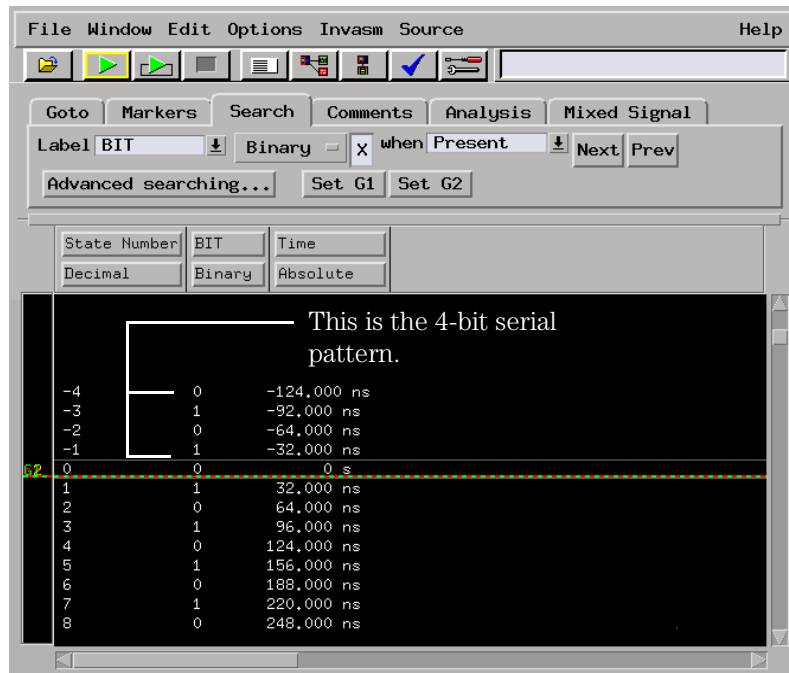


- 4 In the field to the left of *LSB First*, enter the serial pattern '0101'.



Run the Analyzer and View the Listing

- 1 Select the *Run* icon to capture the data.
- 2 Select the *System* icon.
- 3 Select the slot with the analyzer you are using, and select *Listing...*
- 4 Select the *Search* tab.
- 5 Under *BIT*, select *Binary*.



Note

You may only see 0 through -3 lines of data before the trigger, which would show the serial pattern '101'. The analyzer saw the full 4-bit serial pattern '0101' but did not display enough lines of data before the trigger to show you this. If you select the *Run* icon a couple more times, the -4 line of data will show up.

Save Your Work

- 1** From the Listing *File* menu, select *Save Configuration...*
- 2** Go to the directory */logic/training/*.
- 3** Select the *Save* tab.
- 4** In the *Filename* field, enter SERIAL.
- 5** Select the *Save* button.
- 6** Close the *Listing* window by selecting *File*, then *Close* from the menu bar.
- 7** Go back to the Setup window and select *Close*.

Lesson Summary

You have learned how to make a more advanced state measurement.

You did the following:

- ✓ Set up the state analyzer.
- ✓ Triggered on a 4 bit serial pattern.
- ✓ Ran the analyzer and viewed the listing.
- ✓ Saved your work.

What's Next?

To learn about timing analysis and how to make a basic timing measurement, go to chapter 3.

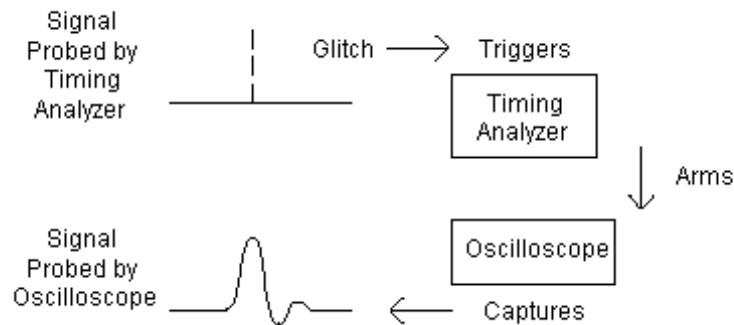
To learn how to trigger the oscilloscope with the timing analyzer, go to chapter 8.

To learn how to use the pattern generator, go to chapter 9.

Trigger the Oscilloscope with the Timing Analyzer

Trigger the Oscilloscope with the Timing Analyzer

Triggering the oscilloscope with the timing analyzer is an “intermodule measurement,” which means it involves more than one instrument. In this exercise, the timing analyzer is used to trigger on the symptom, and the oscilloscope is used to monitor the cause. The symptom we will trigger on is the glitch. This capturing of data simultaneously is done by telling the oscilloscope to trigger after the timing analyzer triggers. In other words, the timing analyzer will “arm” the oscilloscope.



In this chapter, you will capture the glitch on the credit card board by using the timing analyzer to trigger the oscilloscope. This chapter steps you through setting up the timing analyzer and bus labels, triggering on the glitch, making an intermodule measurement, and importing the analog waveform into the timing waveform window.

In this chapter, you will learn how to:

- Connect the oscilloscope probe and turn the glitch on.
- Get the analog waveform on the display.
- Set up the timing analyzer.
- Set up the timing analyzer to trigger on the glitch.
- Tell the oscilloscope when to trigger.
- Set up the analyzer to arm the oscilloscope.
- Run the timing analyzer and oscilloscope.
- Add the analog waveform to the timing waveform.
- Save your work.

Load the RESET Configuration File

The RESET file defaults all settings so that you can begin the exercises. You created the RESET file in Chapter 2.

1 Decide what to do.

- If you have just completed chapter 2, go to the next page.
- If you have reconnected the credit card board to a different analyzer, or if you have not created a RESET file, go to chapter 2 “Before You Begin.”
- If you have just completed an exercise other than chapter 2, go to step 2.

2 Select the *File Manager* icon from the icon bar.

3 Under *Directories*, go to the directory */logic/training/*.

4 Under *Contents of ‘training’*, select the RESET file with the file description of the analyzer you have connected to the credit card board.

For example, if you are using an Agilent Technologies 16717A, you will select the file ‘RESET.__X’ with the file description of ‘16717A_LA_Config’.

5 Select the *Load* tab.

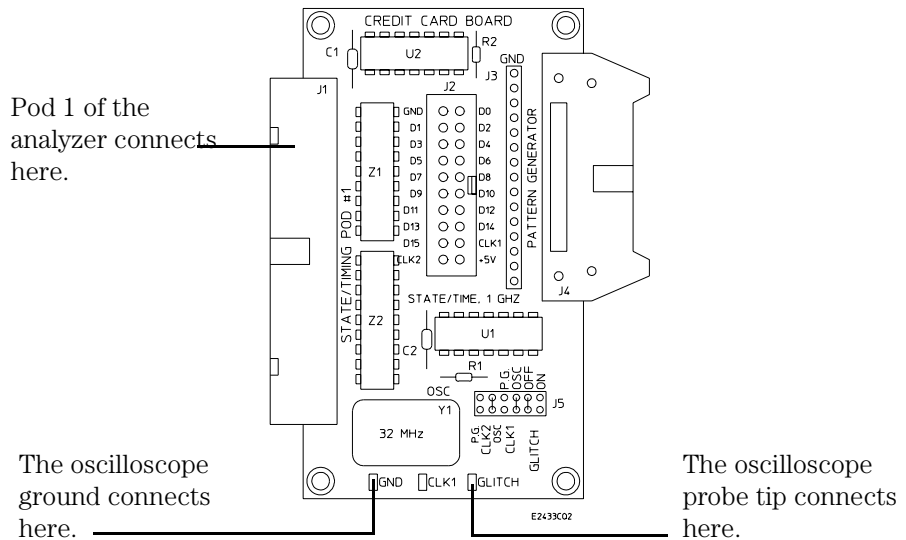
6 Select *Load*.

7 Select *Yes*.

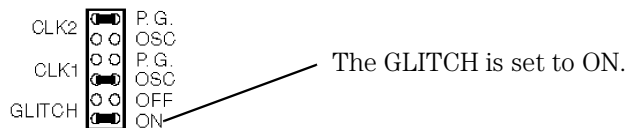
- 8** Under *Contents of 'training'*, select the RESET file with the file description of 16534A_Config. This is the oscilloscope you have connected to the credit card board.
- 9** Select *Load*.
- 10** Select *Yes*.
- 11** Select *Close*.

Connect the Oscilloscope Probe and Turn the Glitch On

- 1 Connect the oscilloscope probe to channel 1 on the oscilloscope.
- 2 Connect the probe tip to the test point labeled “Glitch” on the credit card board.
- 3 Connect the probe ground lead to the test point labeled “Ground” on the credit card board.



- 4 Set the jumpers on the credit card board as shown below.



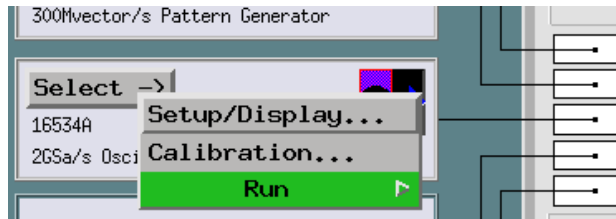
Also See

Chapter 10 “Setting the Jumpers” for more information on the jumper settings of J5 on the credit card board.

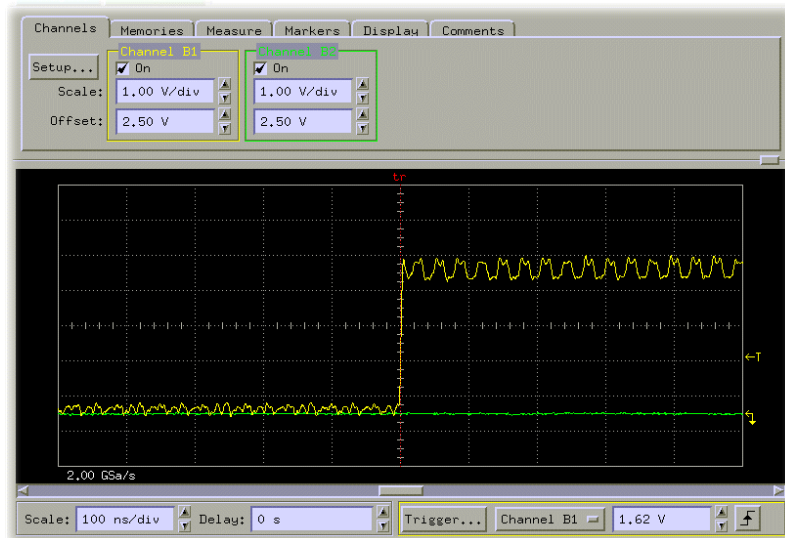
Get the Analog Waveform on the Display

Before setting up the timing analyzer and trigger, let's get the waveform on the display.

- 1 In the Main System window, select the Oscilloscope module.



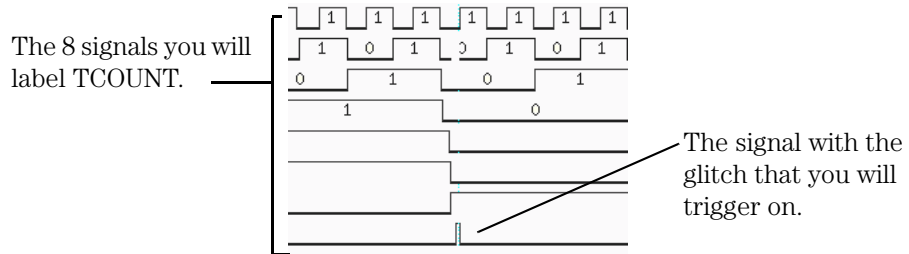
- 2 Select *Setup/Display...* from the pop-up menu.
- 3 In the *Display* window, select the *Run* icon to get the waveform on the display.



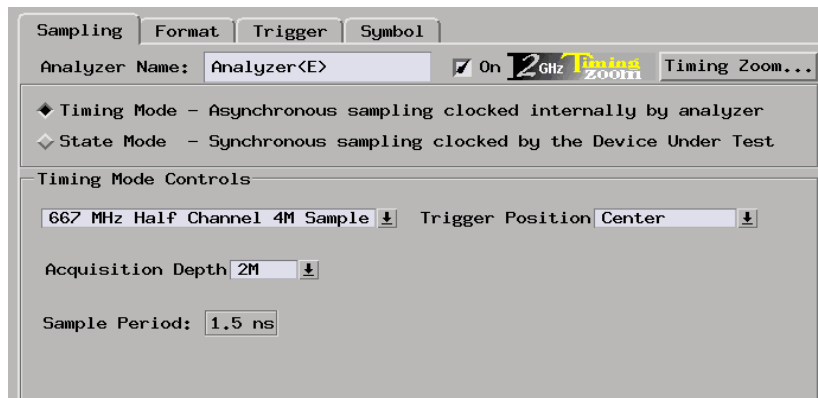
Your waveform may look different than the one in the graphic above. For right now, we want to see a waveform showing that the oscilloscope is connected to the credit card board.

Set Up the Timing Analyzer

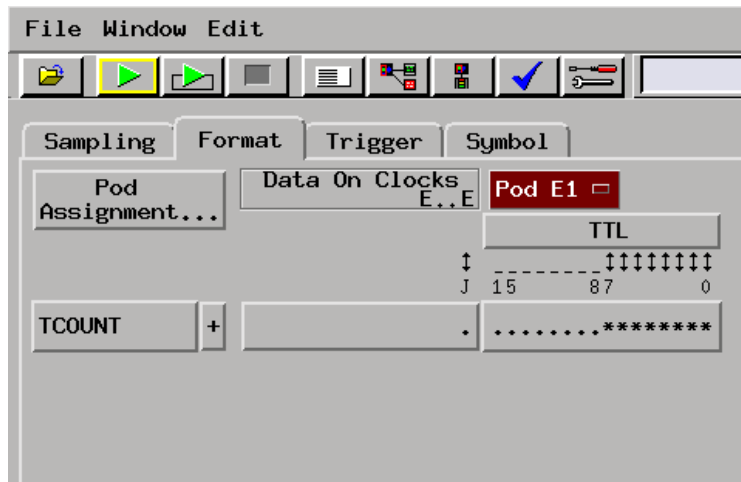
Now you will configure the timing analyzer with the label TCOUNT, the edge GLITCH, and the sampling speed to capture the glitch.



- 1 Choose the analyzer you have connected to the credit card board.
- 2 Select *Setup...* from the pop-up menu to activate that instrument.
- 3 Select the *Sampling* tab.
- 4 Under *Timing Mode Controls*, select *Half Channel*.

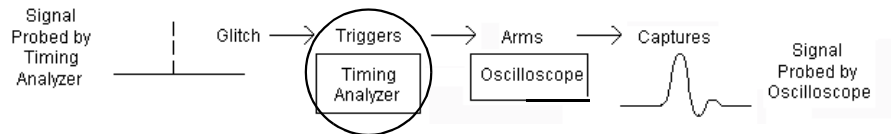


- 5 Select the *Format* tab.
- 6 Select *Label1*, then choose *Rename*.
- 7 Change the label name to *TCOUNT*.
- 8 To the far right of *TCOUNT*, select the field showing the 16 channels of pod 1.
- 9 Assign the lower 8 channels of pod 1 to *TCOUNT* by choosing the “.....*****” selection in the pop-up menu.



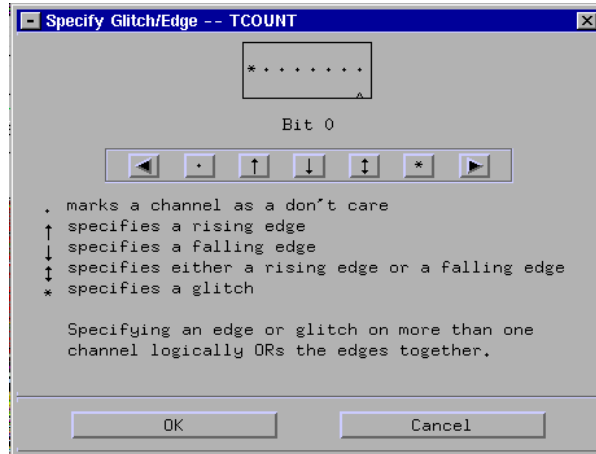
Set Up the Timing Analyzer to Trigger on the Glitch

The timing analyzer is used to trigger on the glitch because it has the ability to capture a glitch with minimal setup.

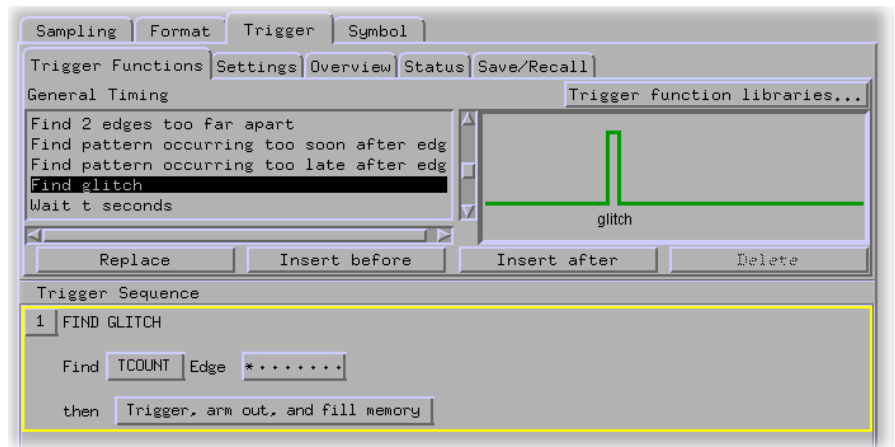


- 1 Select the *Trigger* tab.
- 2 Under the *Trigger Functions* tab, select 'Find glitch'.
- 3 Select *Replace* to replace the default trigger sequence with the 'Find glitch' trigger function.
- 4 Under the *Trigger Sequence 1*, select the field to the far-right of *Find TCOUNT edge*.

- 5 Assign a glitch to bit 7 “*”, and assign don’t cares “.” to all other bits.

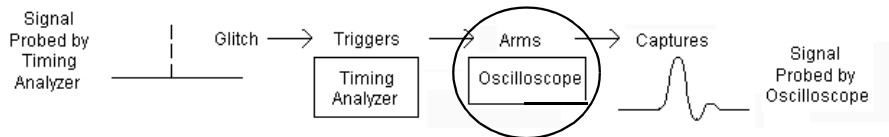


- 6 Select OK.



Tell the Oscilloscope When to Trigger

The oscilloscope will capture the glitch if it is set to trigger immediately after the timing analyzer triggers.

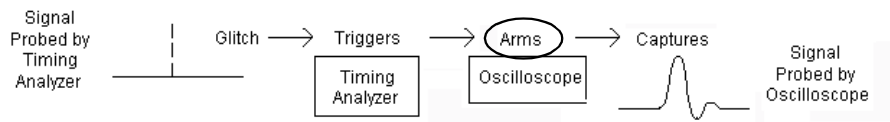


- 1** From the *Oscilloscope* window menu bar, select *Setup*, and then *Trigger...*
- 2** In the *Trigger Setup - Scope* window, select *Immediate*.
This tells the oscilloscope to trigger when the timing analyzer triggers.
- 3** Select *Close*.

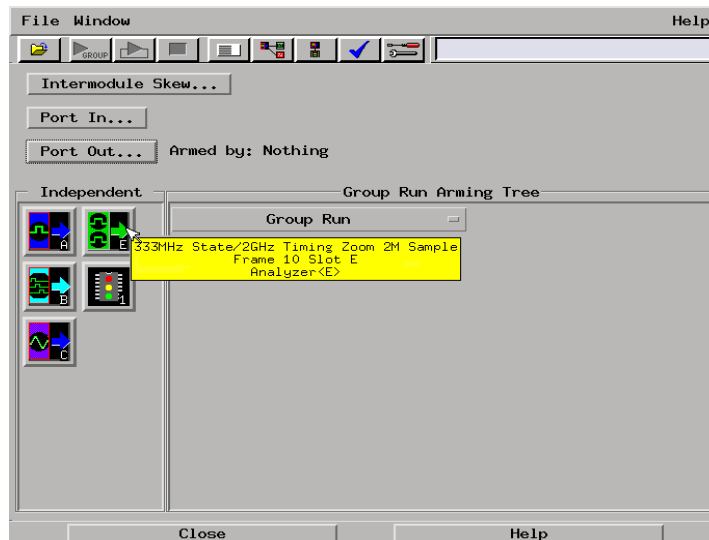
Set Up the Analyzer to Arm the Oscilloscope

Now that the timing analyzer is set to trigger on the glitch, and the oscilloscope is set to trigger after the timing analyzer, it is time to coordinate the run function of both instruments. This coordination is called “arming”, and it is set up in the Intermodule window. The Intermodule window shows a graphical representation of the internal arming sequence between instruments.

In this exercise, the oscilloscope is ‘armed by’ the timing analyzer. This means that for the oscilloscope to trigger, the timing analyzer must trigger first.



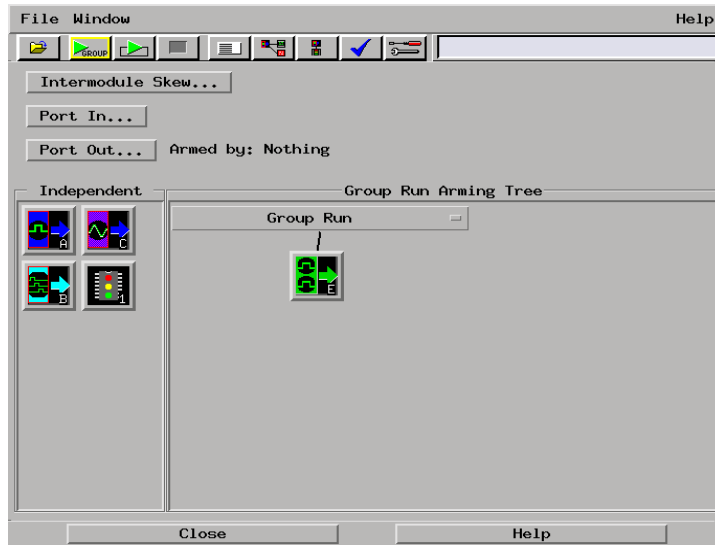
- 1 Go back to the Main System window.
- 2 Select the *Inter-Module* icon from the icon bar.
- 3 Read the pop-up descriptions.



Chapter 8: Trigger the Oscilloscope with the Timing Analyzer Set Up the Analyzer to Arm the Oscilloscope

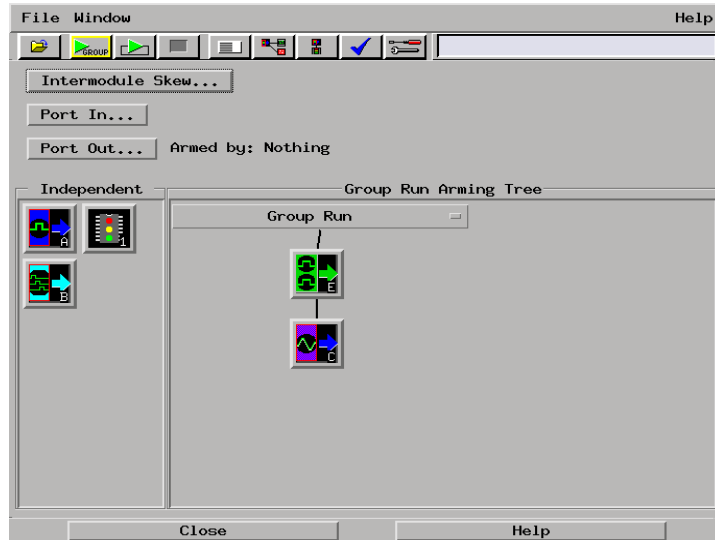
- 4 Select analyzer you are using from the *System* window.
- 5 Select *Group Run* from the pop-up menu.

This tells the timing analyzer to begin looking for the glitch when you press the *Group Run* icon.



- 6 Go back to the icons under *Independent* and find the oscilloscope module you are using.
- 7 Select the oscilloscope icon, then choose the analyzer you are using.

This tells the oscilloscope to wait for the timing analyzer to trigger. We specified this when we told the oscilloscope to trigger immediately after the timing analyzer.



- 8 Select *Close* to close the Intermodule window.

Run the Timing Analyzer and Oscilloscope

- 1 Go back to the oscilloscope display.
- 2 Select the *Run Group* icon to run the timing analyzer and oscilloscope.

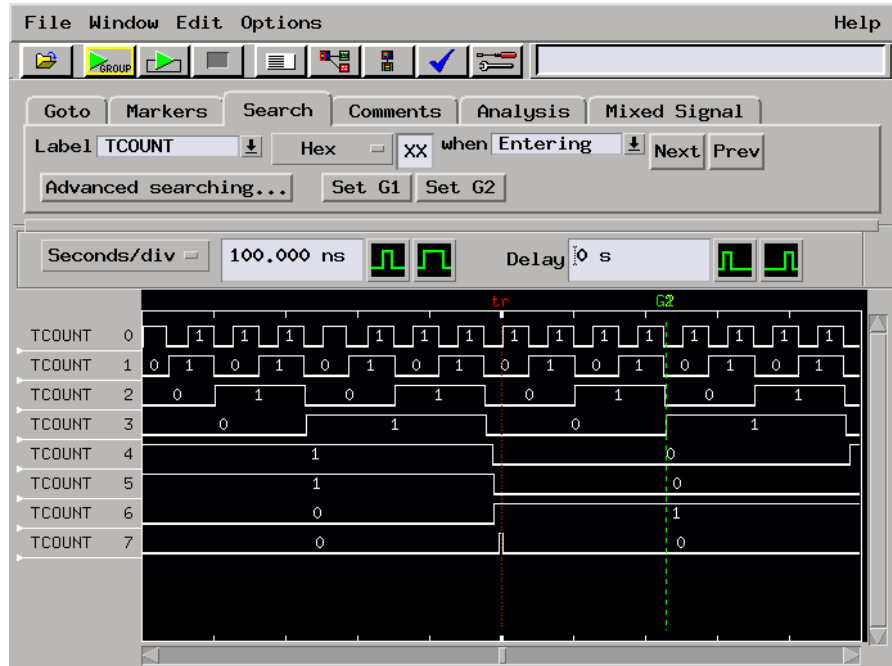
The set up you just did in the Intermodule window determines how Group Run performs.

- 3 Look at the oscilloscope display. See the glitch. Now let's look at the timing waveform showing all 8 bits of the counter.



- 4 Go back to the Main System window.
- 5 Select the analyzer you are using, and choose *Waveform...* from the pop-up menu.

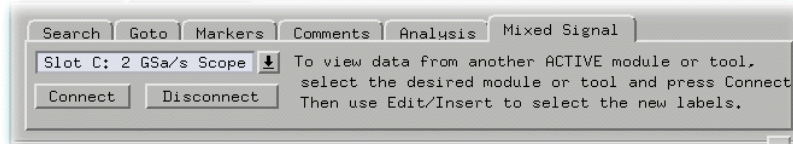
- 6 Select *TCOUNT all*, then choose *Expand* from the pop-up menu.
- 7 Enlarge the *Waveform* window so that you can see all 8 data lines with some extra room after TCOUNT7. You will add the oscilloscope waveform here.



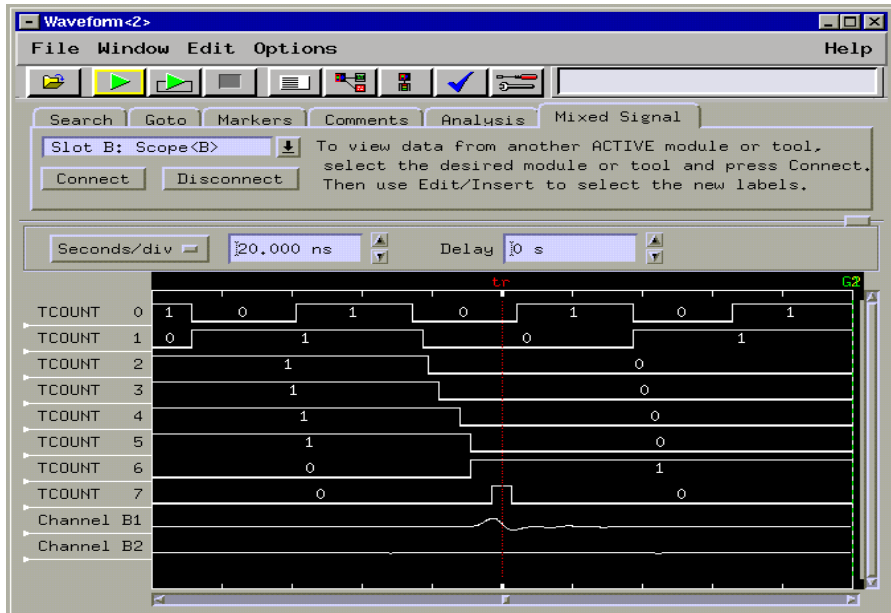
Add the Analog Waveform to the Timing Waveform

Adding the oscilloscope waveform to the timing waveform display is useful for seeing the glitch in analog and how the glitch affects the other signals.

- 1 In the timing analyzer *Waveform* window, select the *Mixed Signal* tab.
- 2 Select the down arrow, and choose the oscilloscope.
- 3 Select *Connect*.

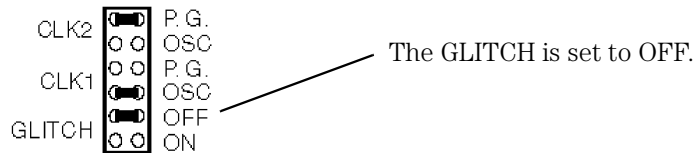


- 4 To the right of *Seconds/Div* enter 20ns. Now you can see the channels of the oscilloscope next to the timing waveform.



Turn the Glitch Off

- 1 Set the GLITCH jumper on the credit card board to OFF.



Save Your Work

- 1 From the Waveform *File* menu, select *Save Configuration...*
- 2 Go to the directory */logic/training/*.
- 3 Select on the *Save* tab.
- 4 In the *Filename* field, enter GLITCH.
- 5 Select the *Save* button.
- 6 Close the *Waveform* window by selecting *File*, then *Close* from the menu bar.
- 7 Close the *Oscilloscope* window the same way you closed the *Waveform* window.
- 8 Go back to the *Setup* window and select *Close*.

Lesson Summary

You have learned how to use the timing analyzer to trigger the oscilloscope, and how to view the analog and digital waveforms in the same window.

You did the following:

- ✓ Connected the oscilloscope and turned on the glitch.
- ✓ Got the analog waveform on the display.
- ✓ Set up the timing analyzer.
- ✓ Set up the timing analyzer to trigger on the glitch.
- ✓ Set up the oscilloscope to trigger immediately following the timing analyzer.
- ✓ Armed the oscilloscope by the timing analyzer.
- ✓ Ran the analyzer and oscilloscope.
- ✓ Added the analog waveform to the timing waveform.
- ✓ Adjusted the intermodule skew.
- ✓ Saved your work.

What's Next?

To learn about state analysis and how to make a basic state measurements, go to chapter 5.

To learn how to use the pattern generator, go to chapter 9.

Using the Pattern Generator

Using the Pattern Generator

The pattern generator provides programmable digital output that can be used to stimulate and control a system under test. This chapter shows you how to program the pattern generator so that it provides a pattern of "walking ones." Because the pattern generator is an output module, the timing analyzer will be used to view the pattern generator's output.

This chapter also shows you a simple process that represents basic stimulus/response testing. For example, if you are applying the "walking ones" pattern from the pattern generator to a memory, you can use the timing analyzer to see if the "walking ones" pattern is being written to and read from memory properly.

This chapter steps you through configuring the timing analyzer, programming the pattern generator to output a “walking ones” pattern, running the pattern repetitively, and using the timing analyzer to capture the pattern.

In this chapter, you will:

- Set up the timing analyzer and bus labels.
- Trigger on the pattern 1.
- Set up the pattern generator.
- Program the pattern generator.
- Repetitively run the walking ones program.
- Run the analyzer and view the walking ones pattern.
- Stop the pattern generator.
- Save your work.

Load the RESET Configuration File

The RESET file defaults all settings so that you can begin the exercises. You created the RESET file in Chapter 2.

1 Decide what to do.

- If you have just completed chapter 2, go to the next page.
- If you have reconnected the credit card board to a different analyzer, or if you have not created a RESET file, go to chapter 2 “Before You Begin.”
- If you have just completed an exercise other than chapter 2, go to step 2.

2 Select the *File Manager* icon from the icon bar.

3 Under *Directories*, go to the directory */logic/training/*.

4 Under *Contents of ‘training’*, select the RESET file with the file description of the analyzer you have connected to the credit card board.

For example, if you are using an Agilent Technologies 16717A, you will select the file ‘RESET.__X’ with the file description of ‘16717A_LA_Config’.

5 Select the *Load* tab.

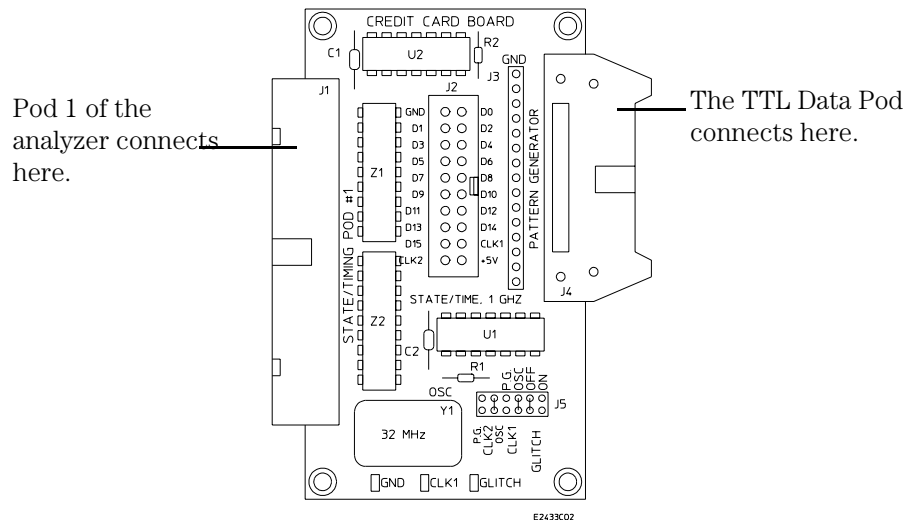
6 Select *Load*.

7 Select *Yes*.

- 8 Under *Contents of 'training'*, select the RESET file with the file description of 16720A_PG_Config. This is the pattern generator you have connected to the credit card board.
- 9 Select *Load*.
- 10 Select *Yes*.
- 11 Select *Close*.

Connect the Pattern Generator

Connect the pattern generator output Pod 4 to the TTL Data Pod. Then connect the TTL Data Pod to J4 (labeled PATTERN GENERATOR) on the training board.



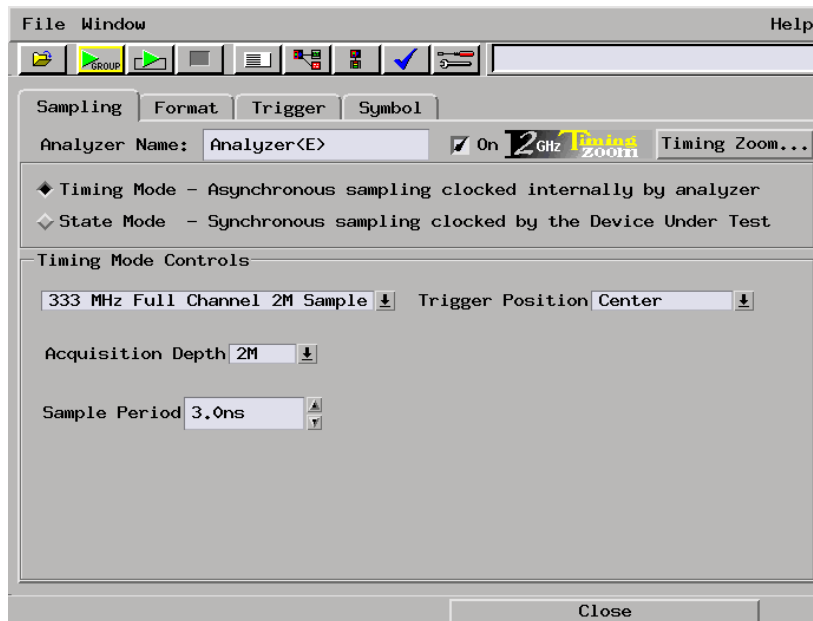
Set Up the Timing Analyzer

First we will set up the timing analyzer to capture data on bit 1 of the credit card board.

Also See

Chapter 3 “Introduction to Timing Analysis: Trigger on an Edge”, for more information on timing analysis.

- 1 Select the analyzer you have connected to the credit card board.
- 2 Select *Setup...* from the pop-up menu to activate that instrument.
- 3 Select the *Sampling* tab.
- 4 Select *Timing Mode*.



Set Up the Bus Labels

- 1 Select the *Format* tab.

Now you will organize the data you are capturing by creating a label and assigning the channels of interest to that label.

- 2 Select *Label1*, then choose *Rename*.
- 3 Change the label name to *PATGEN*.

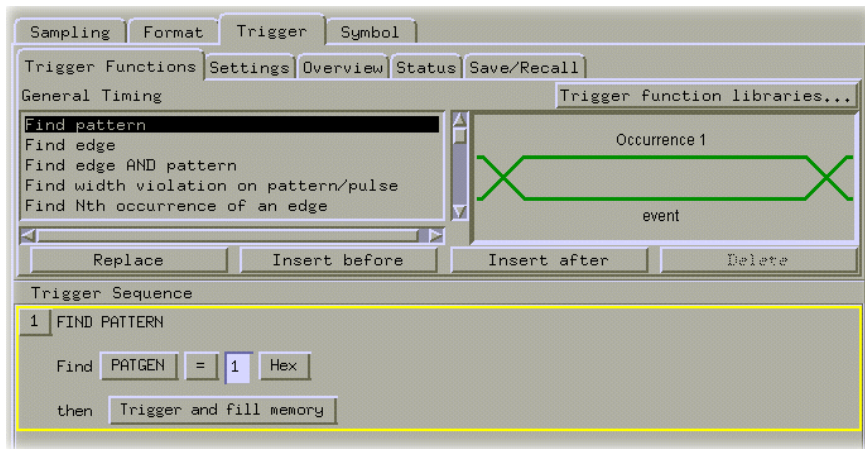
PATGEN is short for pattern generator, and represents the pattern generator data captured by the timing analyzer.

- 4 To the far right of *PATGEN*, select the field showing the 16 channels of pod 1.
- 5 Select *Individual...* from the pop-up menu.
- 6 Select channels eleven through eight.
- 7 Select *OK*.



Define the Trigger Conditions: Trigger on a 1

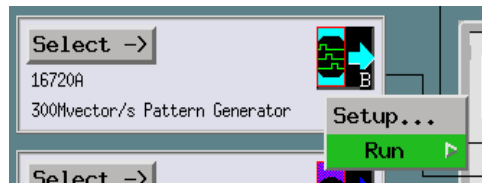
- 1 Select the *Trigger* tab.
- 2 The trigger function *FIND PATTERN* should be listed under Trigger Sequence 1. If it is not, select 'Find pattern' under the *Trigger Functions* tab, and choose *Replace*.
- 3 Select the field to the left of *Hex*, and enter 1.



Set Up the Pattern Generator

For the pattern generator to output the "walking ones" to the logic analyzer, the lower four bits of Pod 4, which is connected to the training board through the TTL Data Pod, must be assigned to PATGEN.

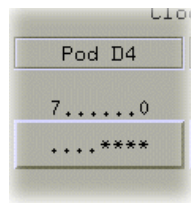
- 1 In the Main System window, select the Pattern Generator, and choose *Setup...*



- 2 Select the *Format* tab.
- 3 Select *Label1*, then choose *Rename*.
- 4 Change the label name to PATGEN.

PATGEN is short for pattern generator, and represents the pattern generator data captured by the timing analyzer.

- 5 Select the field showing the 8 channels of pod 4.
- 6 Select *Individual...* from the pop-up menu.
- 7 Select channels three through zero, then choose *OK*.

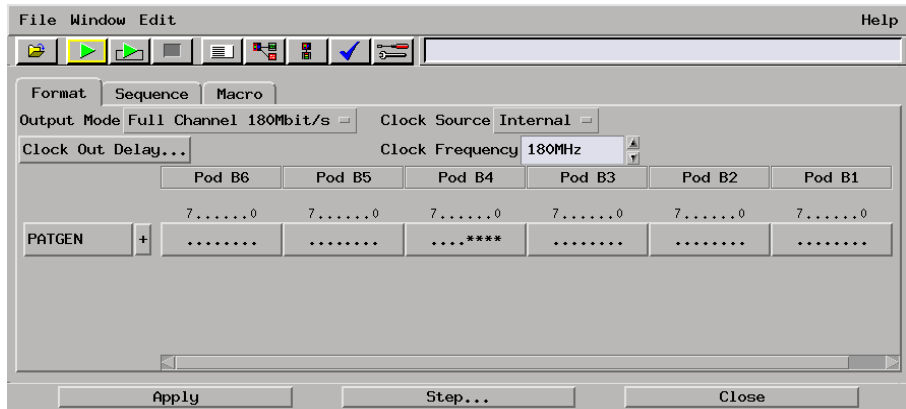


- 8 Set all channels on all other pods, except pod 4, to "don't cares"

Chapter 9: Using the Pattern Generator

Set Up the Pattern Generator

by selecting '.....' from the pop-up menus.



Program the Pattern Generator Output

The Sequence tab is used to program the pattern generator output. In this exercise, you will change the base field to binary and program the "walking ones" program.

- 1 Select the *Sequence* tab.
- 2 Under the label *PATGEN*, select *Hex*, then choose *Binary* from the pop-up menu.
- 3 On line 3, after *MAIN START*, enter '0001' over '0000'.

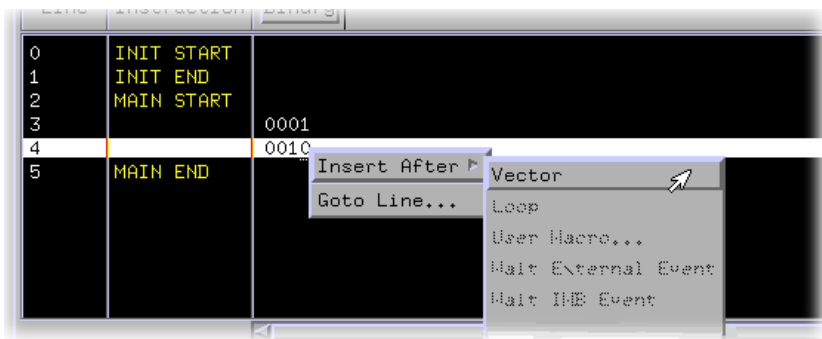
```
0 INIT START
1 INIT END
2 MAIN START
3          0001
4          .....
5 MAIN END
```

- 4 On line 4, enter '0010'.

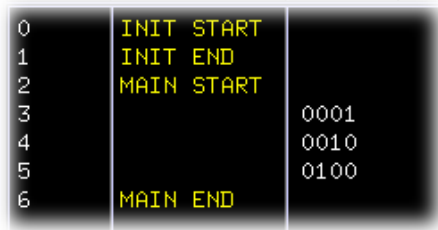
```
0 INIT START
1 INIT END
2 MAIN START
3          0001
4          0010
5 MAIN END
```

Chapter 9: Using the Pattern Generator
Program the Pattern Generator Output

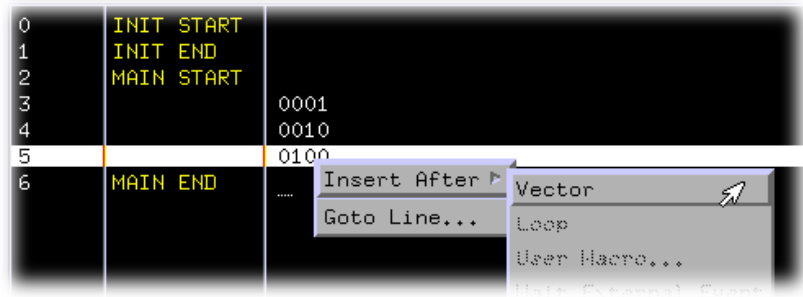
- 5 Select line 4, then choose *Insert After*, and then *Vector*.



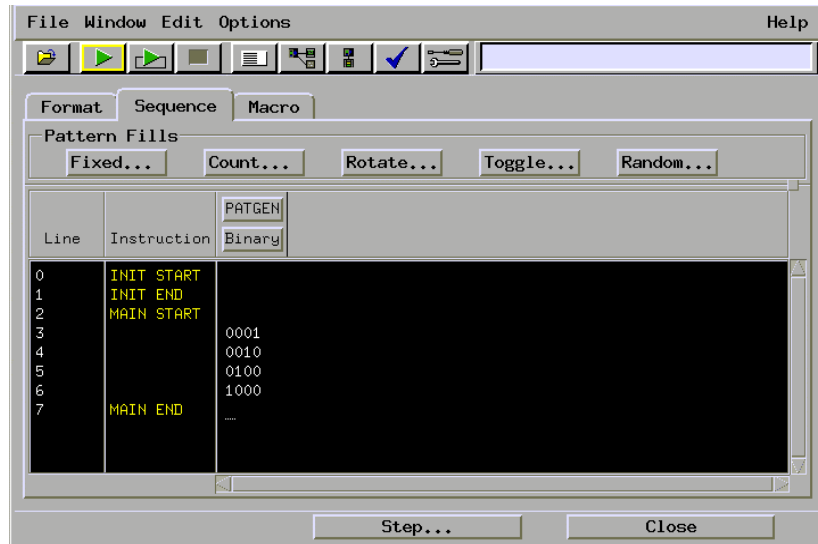
- 6 On line 5, enter '0100'.



7 Select line 5, then choose *Insert After*, and then *Vector*.



8 On line 6, enter '1000'.



The "walking ones" program is complete. The pattern generator will output 0001, 0010, 0100, 1000 to the logic analyzer.

Start the Pattern Generator and View the Walking Ones Pattern

When you select Run Repetitive, the Pattern Generator begins to run in repetitive mode. The output is the repeating "walking ones" pattern. You will not see this output until you switch to the timing analyzer waveform display.

The pattern generator will run independently until you stop it by selecting the Stop icon.

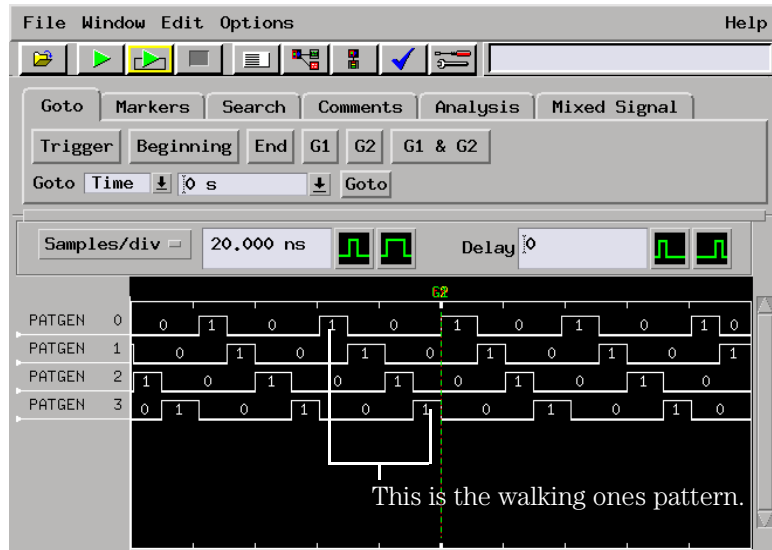
- 1** In the Pattern Generator window, select the *Run Repetitive* icon, to begin the repetitive run.
- 2** Select the Setup window of the analyzer you are using.
- 3** Select the *Run* icon.

The Timing analyzer runs a single trace and automatically displays the Waveform 1 menu in which you see the "walking ones" pattern.

- 4** Select the *System* icon.
- 5** Select the slot with the analyzer you are using, and choose *Waveform*.

Let's expand the data so that you can look at all eight data lines.

- 6 Select *PATGEN all*, and select *Expand*.
- 7 To the right of the *Seconds/div* field enter 20 ns. This will zoom in on the waveform.



Stop the Pattern Generator

- 1 Select the Pattern Generator window.
- 2 Select the *Stop* icon to stop the repetitive run.

NOTE:

The pattern generator requires CPU time when it is running independently in the repetitive mode. Stopping the pattern generator now will prevent other exercises that do not use it from running slower than normal.

Save Your Work

- 1** Close the Pattern Generator window by selecting *Close*.
- 2** From the Waveform *File* menu, select *Save Configuration...*
- 3** Go to the directory */logic/training/*.
- 4** Select the *Save* tab.
- 5** In the *Filename* field, enter PATTERN.
- 6** Select the *Save* button.
- 7** Close the *Waveform* window by selecting *File*, then *Close* from the menu bar.
- 8** Go back to the Setup window and select *Close*.

Lesson Summary

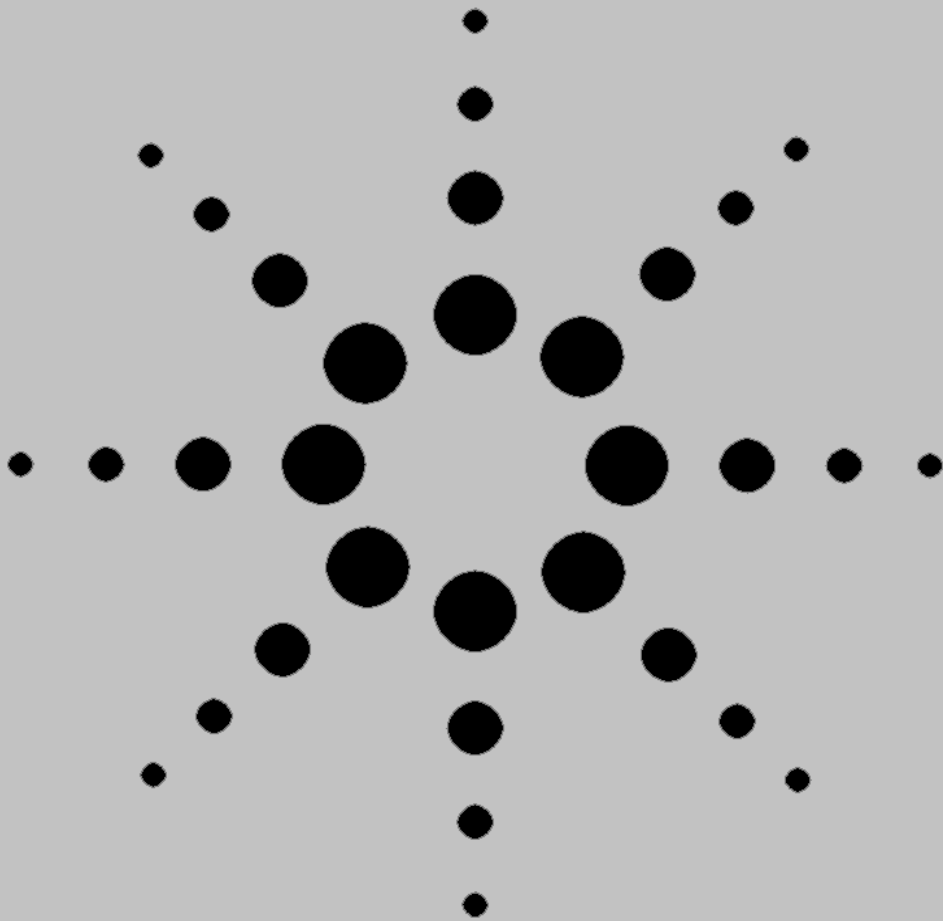
You did the following:

- ✓ Set up the timing analyzer.
- ✓ Triggered on the pattern 1.
- ✓ Set up the pattern generator.
- ✓ Programmed the pattern generator.
- ✓ Repetitively ran the walking ones program.
- ✓ Ran the analyzer and viewed the walking ones pattern.
- ✓ Stopped the pattern generator.
- ✓ Saved your work.

What's Next?

To learn how to trigger the oscilloscope with the timing analyzer, go to chapter 8.

Part 3



Reference

Setting the Jumpers

Setting the Jumpers

The jumpers on J5 of the credit card board are used to control the source of the state clock and to turn the glitch on or off. Before you start each chapter, you should check the jumpers to make sure they are properly set. The "To Set the Jumpers" exercise, on the next page, gives you the information you need to change the jumpers. Table 10-1 shows you the jumper settings for the chapters.

Table 10-1

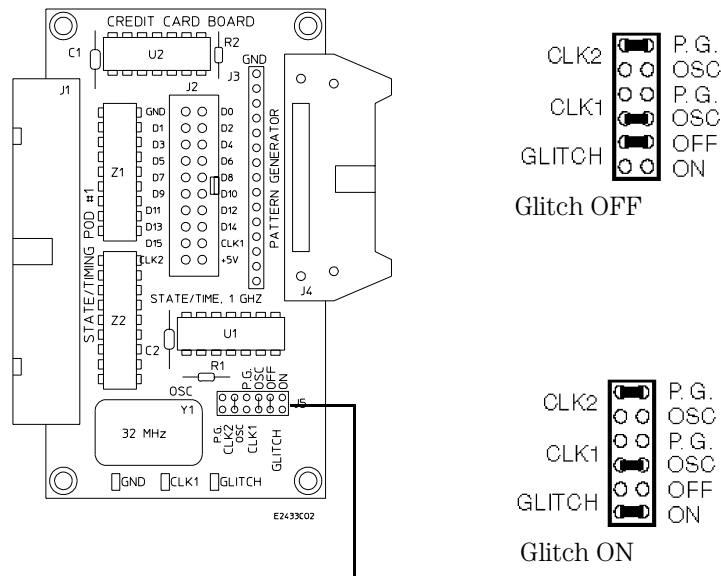
Jumper Settings

	GLITCH	CLK1
Chapter 8	ON	OSC
All Other Chapters (Default)	OFF	OSC

To Set the Jumpers

- 1 Pull the appropriate jumper off of the pins of J5.
- 2 Push the jumper onto the correct pins of J5. You only need to change jumpers that differ from the settings in table 10-1.

Set the jumpers at their default settings for all chapters. Table 10-1 shows you the default settings and the settings for each chapter. Chapter 8, "Trigger the Oscilloscope with the Timing Analyzer," requires you to change the setting of the glitch jumper.



The jumpers are set here.

About the Credit Card Board

About the Credit Card Board

The credit card board helps you learn the basics of Agilent Technologies Logic Analyzers. The following reference information is provided for those who want to know more about how the credit card board works.

Power Source

The credit card board is powered by the +5 V supplied by the logic analyzer pods, so a logic analyzer pod must be connected to either J1 or J2 of the credit card board in order for the board to work. If only J2 is connected, it must be connected to the logic analyzer through a termination adapter (part number 01650-63203).

CAUTION:

If the termination adapter part number is Agilent 01650-63201, the CLK2 jumper must be set to P.G. to avoid connecting the output of the oscillator to +5 V and eventually damaging the oscillator.

If J1 is connected, the termination adapter is not required because J1 is terminated on the board by Z1 and Z2.

Circuit Description

The credit card board uses an 8-bit ripple counter running at 32 MHz to produce transitions on the lower 8 bits of a logic analyzer pod. The upper eight bits can be connected to the pattern generator through connector J4.

For state analysis, you can clock the state analyzer using the oscillator on the credit card board (reference designator Y1) or using a pattern generator in an Agilent Technologies 16700 logic analysis system. The

sources for clocks 1 and 2 are selected by the positions of jumpers CLK1 and CLK2, respectively. When the CLK1 and CLK2 jumpers are set to OSC (oscillator), the clock source for the state analyzer is the oscillator on the credit card board (Y1). When the CLK1 and CLK2 jumpers are set to P.G. (pattern generator), the clock source for the state analyzer is bit D7 or strobe 2 of the pattern generator, depending on which pattern generator pod is connected to J4.

Jumpers

The jumpers are used to turn the glitch on and off and to select the sources for state clocks 1 (CLK1) and 2 (CLK2).

Glitch

When the GLITCH jumper is set to OFF, the waveform on D7 of J1 and J2 is the most significant bit of the counter. When this jumper is set to ON, a glitch appears on D7 and the waveform no longer represents the most significant bit of the counter. The glitch always appears on the test point labeled GLITCH, regardless of the position of this jumper.

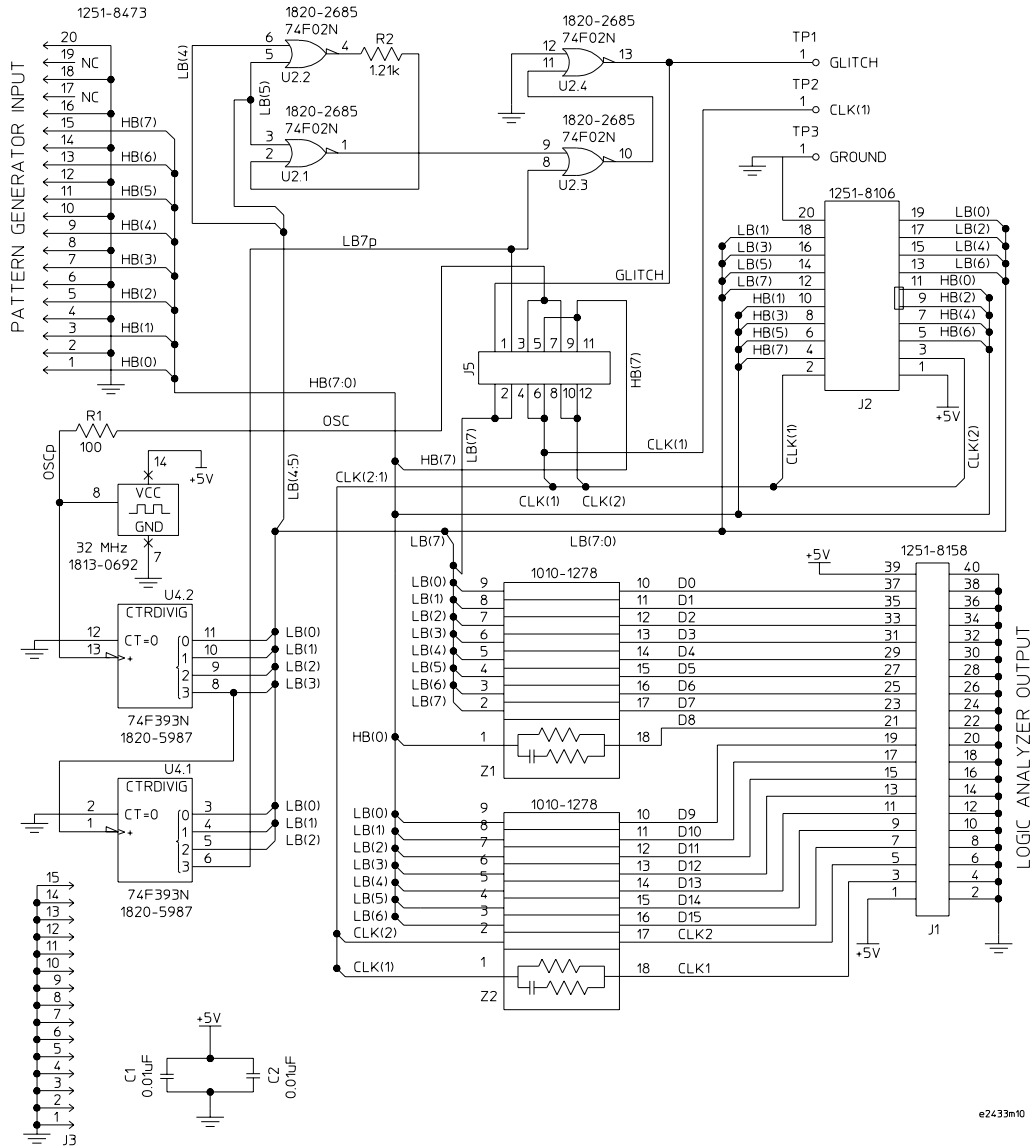
CLK1

The CLK1 jumper selects the source of state clock 1. If you choose OSC (the default), the source of the clock will be the oscillator on the training board. If you choose P.G., the source of the clock will be Strobe 2 or D7 of the pattern generator, depending on which pattern generator pod you have connected to the credit card board.

CLK2

The CLK2 jumper selects the source of state clock 2 for the Agilent Technologies 16540A used in an Agilent Technologies 16700 logic analysis system. If you choose OSC, the source of the clock will be the oscillator on the credit card board. If you choose P.G. (the default), the source of the clock will be Strobe 2 or D7 of the pattern generator, depending on which pod you have connected to the credit card board.

Credit Card Board Schematic



e2433m10

© Copyright Agilent Technologies
1998-2000
All Rights Reserved.

Reproduction, adaptation, or translation without prior written permission is prohibited, except as allowed under the copyright laws.

Restricted Rights Legend

Use, duplication, or disclosure by the U.S. Government is subject to restrictions set forth in subparagraph (C) (1) (ii) of the Rights in Technical Data and Computer Software Clause in DFARS 252.227-7013. Agilent Technologies, 3000 Hanover Street, Palo Alto, CA 94304 U.S.A. Rights for non-DOD U.S. Government Departments and Agencies are set forth in FAR 52.227-19 (c) (1,2).

Document Warranty

The information contained in this document is subject to change without notice.

Agilent Technologies makes no warranty of any kind with regard to this material, including, but not limited to, the implied warranties of merchantability or fitness for a particular purpose.

Agilent Technologies shall not be liable for errors contained herein or for damages in connection with the furnishing, performance, or use of this material.

Safety

This apparatus has been designed and tested in accordance with IEC Publication 1010, Safety Requirements for Measuring Apparatus, and has been supplied in a safe condition. This is a Safety Class I instrument (provided with terminal for protective earthing). Before applying power, verify that the correct safety precautions are taken (see the following warnings). In addition, note the external markings on the instrument that are described under "Safety Symbols."

Warning

- Before turning on the instrument, you must connect the protective earth terminal of the instrument to the protective conductor of the (mains) power cord. The mains plug shall only be inserted in a socket outlet provided with a protective earth contact. You must not negate the protective action by using an extension cord (power cable) without a protective conductor (grounding). Grounding one conductor of a two-conductor outlet is not sufficient protection.
- Only fuses with the required rated current, voltage, and specified type (normal blow, time delay, etc.) should be used. Do not use repaired fuses or short-circuited fuseholders. To do so could cause a shock or fire hazard.

- Service instructions are for trained service personnel. To avoid dangerous electric shock, do not perform any service unless qualified to do so. Do not attempt internal service or adjustment unless another person, capable of rendering first aid and resuscitation, is present.

- If you energize this instrument by an auto transformer (for voltage reduction), make sure the common terminal is connected to the earth terminal of the power source.

- Whenever it is likely that the ground protection is impaired, you must make the instrument inoperative and secure it against any unintended operation.

- Do not operate the instrument in the presence of flammable gasses or fumes. Operation of any electrical instrument in such an environment constitutes a definite safety hazard.

- Do not install substitute parts or perform any unauthorized modification to the instrument.

- Capacitors inside the instrument may retain a charge even if the instrument is disconnected from its source of supply.

Safety Symbols



Instruction manual symbol: the product is marked with this symbol when it is necessary for you to refer to the instruction manual in order to protect against damage to the product.



Hazardous voltage symbol.



Earth terminal symbol: Used to indicate a circuit common connected to grounded chassis.

WARNING

The Warning sign denotes a hazard. It calls attention to a procedure, practice, or the like, which, if not correctly performed or adhered to, could result in personal injury. Do not proceed beyond a Warning sign until the indicated conditions are fully understood and met.

CAUTION

The Caution sign denotes a hazard. It calls attention to an operating procedure, practice, or the like, which, if not correctly performed or adhered to, could result in damage to or destruction of part or all of the product. Do not proceed beyond a Caution symbol until the indicated conditions are fully understood or met.

Product Warranty

This Agilent Technologies product has a warranty against defects in material and workmanship for a period of one year from date of shipment. During the warranty period, Agilent Technologies will, at its option, either repair or replace products that prove to be defective.

For warranty service or repair, this product must be returned to a service facility designated by Agilent Technologies.

For products returned to Agilent Technologies for warranty service, the Buyer shall prepay shipping charges to Agilent Technologies and Agilent Technologies shall pay shipping charges to return the product to the Buyer. However, the Buyer shall pay all shipping charges, duties, and taxes for products returned to Agilent Technologies from another country.

Agilent Technologies warrants that its software and firmware designated by Agilent Technologies for use with an instrument will execute its programming instructions when properly installed on that instrument. Agilent Technologies does not warrant that the operation of the instrument software, or firmware will be uninterrupted or error free.

Limitation of Warranty

The foregoing warranty shall not apply to defects resulting from improper or inadequate maintenance by the Buyer, Buyer-supplied software or interfacing, unauthorized modification or misuse, operation outside of the environmental specifications for the product, or improper site preparation or maintenance.

No other warranty is expressed or implied. Agilent Technologies specifically disclaims the implied warranties of merchantability or fitness for a particular purpose.

Exclusive Remedies

The remedies provided herein are the buyer's sole and exclusive remedies. Agilent Technologies shall not be liable for any direct, indirect, special, incidental, or consequential damages, whether based on contract, tort, or any other legal theory.

Assistance

Product maintenance agreements and other customer assistance agreements are available for Agilent Technologies products. For any assistance, contact your nearest Agilent Technologies Sales Office.

Certification

Agilent Technologies certifies that this product met its published specifications at the time of shipment from the factory. Agilent Technologies further certifies that its calibration measurements are traceable to the United States National Institute of Standards and Technology, to the extent allowed by the Institute's calibration facility, and to the calibration facilities of other International Standards Organization members.

About this edition

This is the *Making Basic Measurements Training Kit for the Agilent Technologies 16700 Series Logic Analysis System*.

Publication number
16700-97020, August 2001
Printed in USA.

The information in this manual previously appeared in
16700-97013, May 2000
16700-97011, July 1999

New editions are complete revisions of the manual. Many product updates do not require manual changes, and manual corrections may be done without accompanying product changes. Therefore, do not expect a one-to-one correspondence between product updates and manual updates.

UNIX is a registered trademark in the United States and other countries, licensed exclusively through X/Open Company Limited.