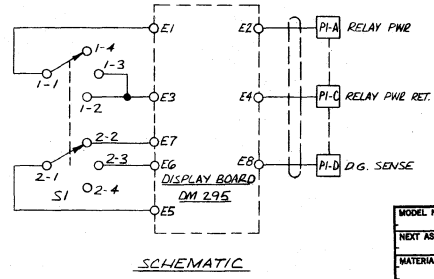
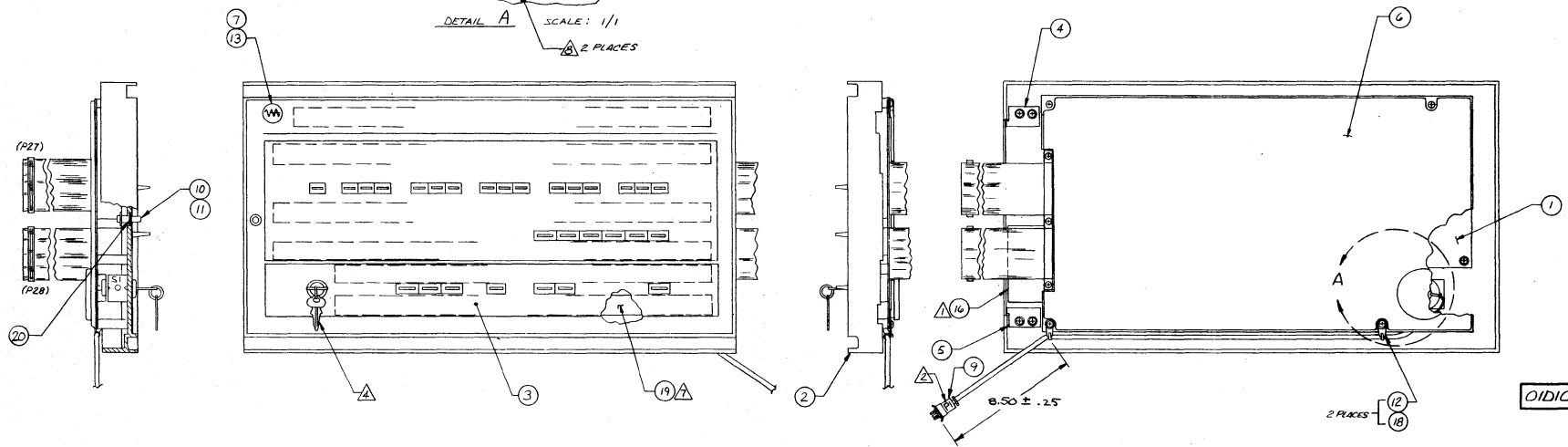
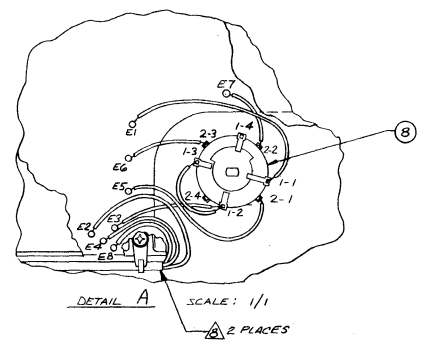


WIRE LIST			
FROM	TO	FIND NO.	COLOR
E5	2-1	15	WHT
E9	2-3	15	WHT
E3	1-2	15	WHT
I-3	1-2	15	WHT
E2	PI-A	17	RED
E4	PI-C	17	BRN
E8	PI-D	17	ORG
E7	2-2	15	WHT
E1	1-1	15	WHT

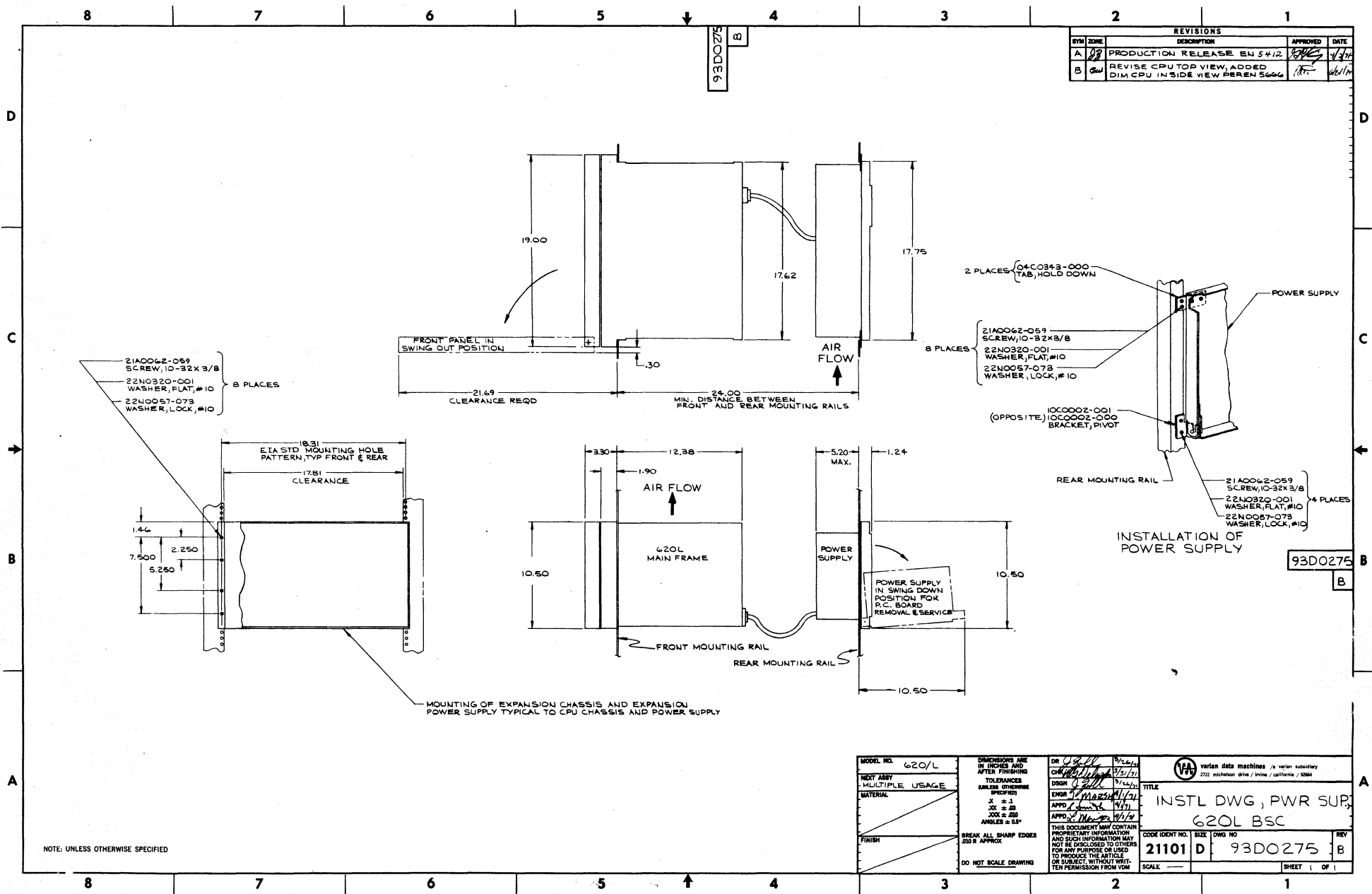
REVISIONS				
SYM	ZONE	DESCRIPTION	APPROVED	DATE
A		PRODUCTION RELEASE PER EN 5324	<i>[Signature]</i>	3/18/71
-	JM	ADDED TO WIRE LIST PER EN 5330	<i>[Signature]</i>	3/18/71
B	JM	8.501.25 WAS 4.752.25 PER EN 5584	<i>[Signature]</i>	4/24/71
C	sm	ADDED FIND NO. 20 TO FID ZONE C7 PER EN 50184	<i>[Signature]</i>	4/14/71



- ▲ CUT SHIELD BACK FLUSH WITH INSULATION, TYP BOTH ENDS
  - ▲ APPLY TAPE (FIND NO. 19) BETWEEN FIND NOS. 2 & 3 AS REQD.
  - ▲ SPOT TIE AS REQUIRED.
  - ▲ ROUTING OF WIRES IS SHOWN FOR REFERENCE ONLY.
  - ▲ BAG KEYS (PART OF FIM B 1) AND ATTACH SECURELY TO ASSEMBLY.
  - ▲ USE HARDWARE IN ACCORDANCE WITH 98A0536.
  - ▲ "PI" REFERENCE DESIGNATION SHOWN FOR INFORMATION ONLY AND DOES NOT APPEAR IN PART
  - ▲ MARK PART NO. 01E1036-000 & THE REV. LETTER OF THE PARTS LIST TO WHICH THE PART WAS MANUFACTURED & SERIAL NO. OF ASSEMBLY IN 12 HIGH CHARACTERS ON FIND NO. 16; ATTACH TO FIND NO. 2 APPROX WHERE SHOWN.
- NOTE: UNLESS OTHERWISE SPECIFIED

FOR PARTS LIST SEE 01E1036

MODEL NO. 620/L	DIMENSIONS ARE IN INCHES AND AFTER FINISHING	DR. KLUISSIS 1/14/71	Western Electric Machines, a unit of 272 Nicholas St. / New York, N.Y. / USA
NEXT ASSY 01E1035	TOLERANCES (UNLESS OTHERWISE SPECIFIED)	CHK. RMD 3/11/71	
MATERIAL	X ± .1 .005 ± .010 ANGLES ± .05°	ENGR. J. MARY 3/17/71	TITLE FRONT PANEL ASSY
FINISH		APPD. J. MARY 3/18/71	THIS DOCUMENT MAY CONTAIN PROPRIETARY INFORMATION AND SUCH INFORMATION MAY NOT BE DISCLOSED TO OTHERS FOR ANY PURPOSE OR USED TO PRODUCE THE ARTICLE OR SUBJECT, WITHOUT WRIT- TEN PERMISSION FROM VOM
	BREAK ALL SHARP EDGES AND R. APPROX	DO NOT SCALE DRAWING	CODE IDENT NO. 21101 D SIZE DWG NO. 01D1036 SCALE 1/2 SHEET 1 OF 1

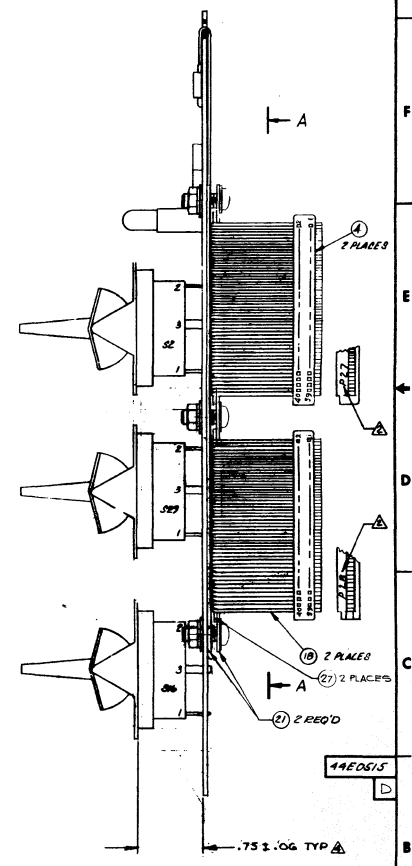
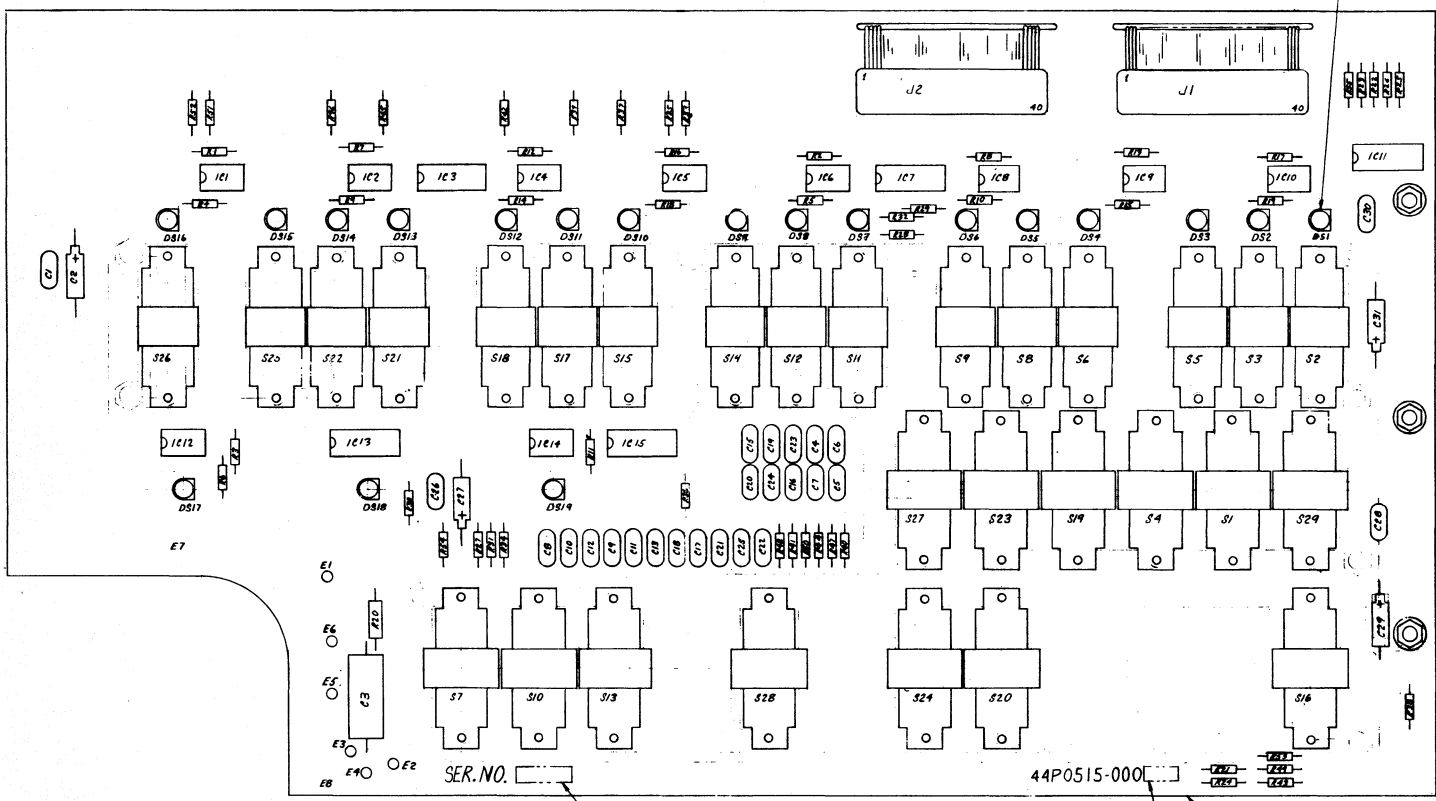
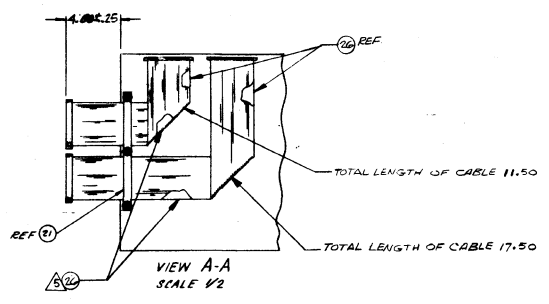


REVISIONS				
SYM	DATE	DESCRIPTION	APPROVED	DATE
A	1/29	PRODUCTION RELEASE EN 5412	[Signature]	1/29
B	2/1	REVISE CPU TOP VIEW, ADDED DIM CPU INSIDE VIEW PER EN 5466	[Signature]	2/1

NOTE: UNLESS OTHERWISE SPECIFIED

MODEL NO. 620/L	DIMENSIONS ARE IN INCHES AND AFTER FINISHING UNLESS OTHERWISE SPECIFIED	DR [Signature] 1/29/71 CHK [Signature] 1/29/71 DSGN [Signature] 1/29/71 ENGR [Signature] 1/29/71 APPD [Signature] 1/29/71	 <small>verlan data machines / a verlan subsidiary</small> <small>372 richmond drive / brea / california / 92604</small>
TITL MULTIPLE USAGE	TOLERANCES	APPROVALS	TITLE INSTL DWG, PWR SUP 620L BSC
MATERIAL	$\pm .1$ $\pm .05$ $\pm .03$ ANGLES $\pm .03^\circ$	THIS DOCUMENT MAY CONTAIN PROPRIETARY INFORMATION AND SUCH INFORMATION MAY NOT BE DISCLOSED TO OTHERS FOR ANY PURPOSE OR USED TO PRODUCE THE ARTICLE OR SUBJECT, WITHOUT WRITTEN PERMISSION FROM VOM.	CODE IDENT NO. 21101 SIZE D DWG NO. 93D0275 SCALE: ——— SHEET 1 OF 1
FINISH	BREAK ALL SHARP EDGES AND APPROX	DO NOT SCALE DRAWING	REV B

REVISIONS			
REV	DATE	DESCRIPTION	APPROVED
Y		PROTOTYPE RELEASE	
Z		PROTOTYPE RELEASE	
A		PRODUCTION RELEASE EN 5307	
B	5/81	ADDED DIM 75.1, LOC 9 ADDED NOTE 9, DRAWING 20150515 44E0515	WES
C	5/81	ADDED NOTE 5 AND REVISED VIEW A-A PER EN 10016-2	WES
D	5/81	CHANGE - YIELD, ADD DIM 107, AND ADDED DIM 87 IN ZONE 1R, 1D, 1C PER EN 6170	WES

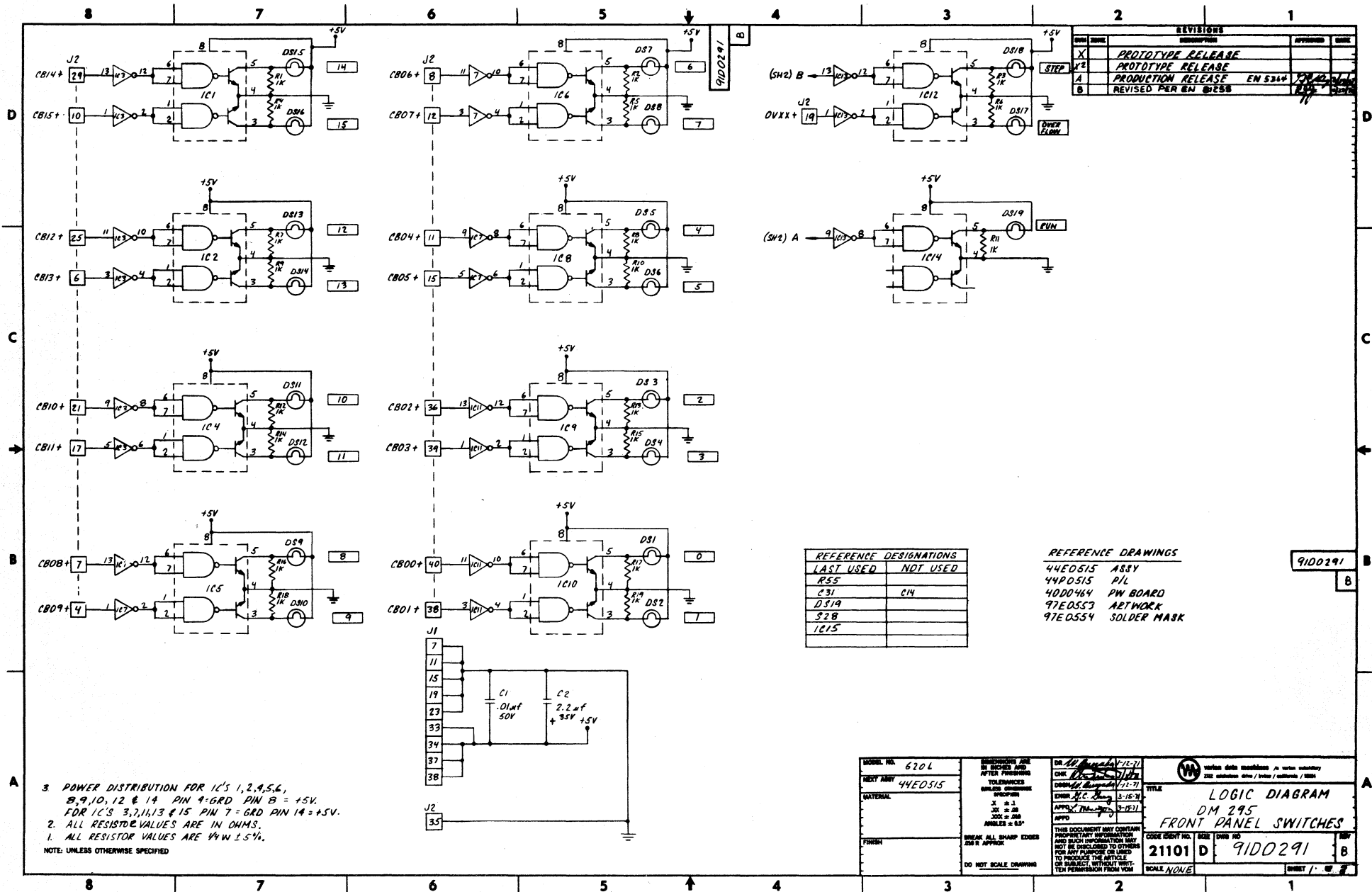


- ▲ INSTALL FIN 26 TO FIN 18 (FLAT CABLE) FULL LENGTH BETWEEN FIN 18 AND FIN 1 (P.C. BOARD)
  - ▲ SWITCH SHALL BE HORIZONTALLY IN LINE WITHOUT SHOWING AIR GAPS BETWEEN ARMS, AFTER SOLDERING.
  - 3. USE HARDWARE IN ACCORDANCE WITH 98A0536.
  - ▲ MARK CONNECTOR REFERENCE DESIGNATION APPROXIMATELY WHERE SHOWN. MARKING TO BE 12 HIGH CHARACTERS AND PERMANENT.
  - A ▲ MARK THE REVISION LETTER OF THE PARTS LIST TO WHICH THE PART WAS MANUFACTURED AND THE APPROPRIATE SERIAL NO. APPROX. WHERE SHOWN IDENTIFICATION. TO BE 12 HIGH CHARACTERS AND PERMANENT.
- NOTE: UNLESS OTHERWISE SPECIFIED

REFERENCE DRAWINGS  
 97E0553 ARTWORK  
 910 0291 LOGIC DIAGRAM  
 4000 464 P. W. BOARD  
 97E0553 SOLDER MASK

FOR PARTS LIST SEE 44P0515

FORM NO. 620 L	REV. 1	DATE 1-7-77	BY WES
PART NO. 0101036	REV. 1	DATE 1-7-77	BY WES
TITLE		44E0515	
DISPLAY BOARD ASSY		21101 E	
FORM NO. 620 L		REV. 1	



REVISIONS			
QTY	DATE	DESCRIPTION	APPROVED
X		PROTOTYPE RELEASE	
X <sup>2</sup>		PROTOTYPE RELEASE	
A		PRODUCTION RELEASE EN 534	
B		REVISED PER EN 6258	

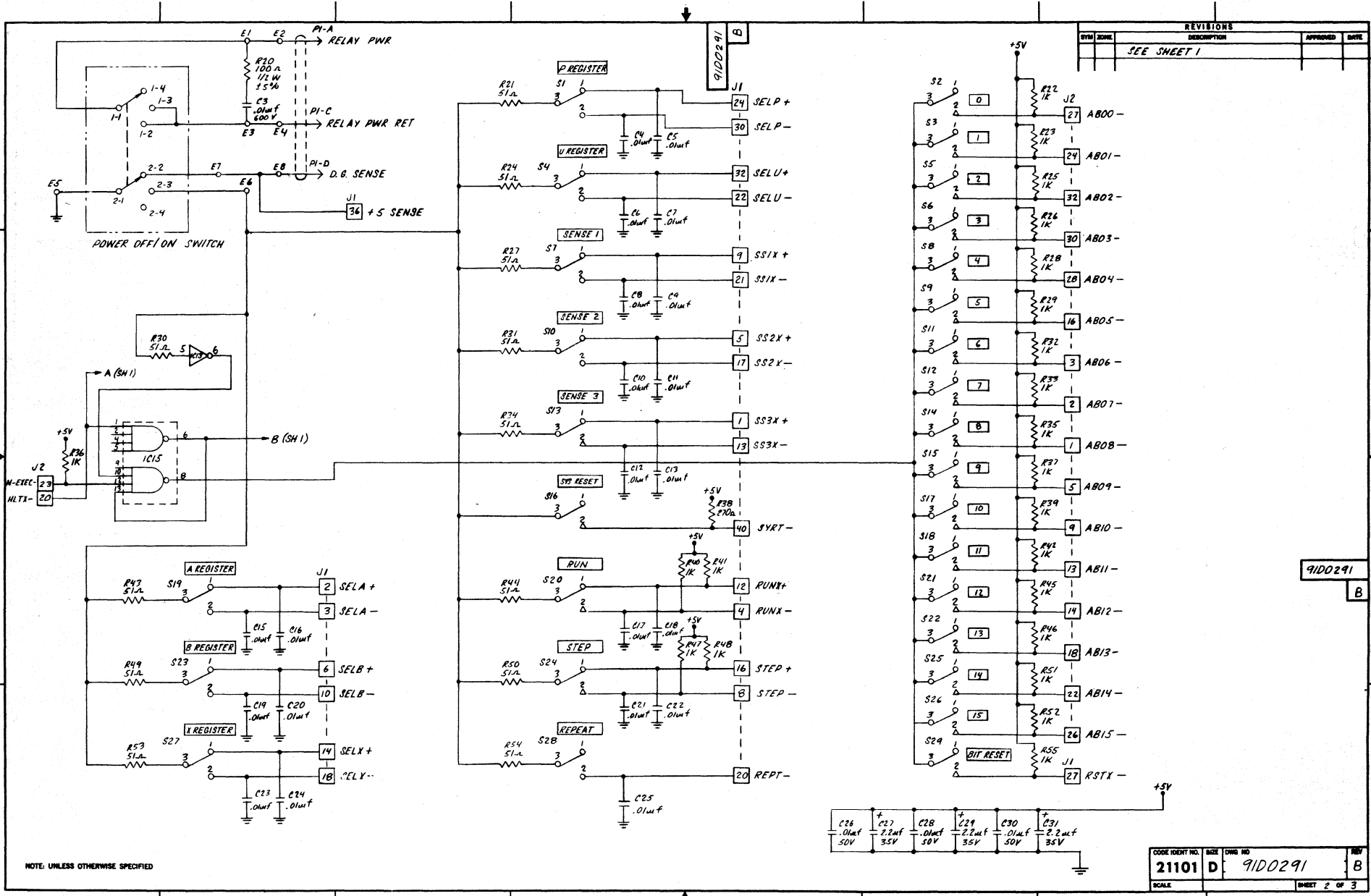
REFERENCE DESIGNATIONS	
LAST USED	NOT USED
R55	
C31	C14
DS19	
S2B	
IC15	

REFERENCE DRAWINGS	
44E0515	ASSY
44P0515	P/L
40D0464	PW BOARD
97E0553	NETWORK
97E0554	SOLDER MASK

3. POWER DISTRIBUTION FOR IC'S 1, 2, 4, 5, 6, 8, 9, 10, 12 & 14 PIN 4 = GRD PIN 8 = +5V.  
 FOR IC'S 3, 7, 11, 13 & 15 PIN 7 = GRD PIN 14 = +5V.  
 2. ALL RESISTOR VALUES ARE IN OHMS.  
 1. ALL RESISTOR VALUES ARE 1/4W ± 5%.

NOTE: UNLESS OTHERWISE SPECIFIED

MODEL NO. 620L NEXT ASSY 44E0515 MATERIAL FINISH	DIMENSIONS ARE TO BE CHECKED AND AFTER FINISHING TOLERANCES UNLESS OTHERWISE SPECIFIED X ± .1 Z ± .05 JOG ± .05 ANGLES ± 6° BREAK ALL SHARP EDGES AND R APPLIC.	DR. <i>[Signature]</i> 7-11-71 CHK. <i>[Signature]</i> 7-11-71 DESIGNED BY <i>[Signature]</i> 7-11-71 ENGR. <i>[Signature]</i> 3-15-71 APPROV. <i>[Signature]</i> 3-15-71 APPD.	THIS DOCUMENT MAY CONTAIN PROPRIETARY INFORMATION AND SUCH INFORMATION MAY NOT BE DISCLOSED TO OTHERS FOR ANY PURPOSE OR USED TO REPRODUCE THE ARTICLE OR SUBJECT, WITHOUT WRITTEN PERMISSION FROM VON SCALE NONE
TITLE LOGIC DIAGRAM DM 295 FRONT PANEL SWITCHES		CODE IDENT NO. 21101 SIZE D DRAW NO. 9100291	SHEET 1 OF 2



REVISIONS			
SYM	ZONE	DESCRIPTION	DATE
		SEE SHEET 1	

91D0291  
B

CODE IDENT NO.	SIZE	DRG NO.	REV
21101	D	91D0291	B
SCALE		SHEET 2 OF 3	

REVISIONS			
SYM	ZONE	DESCRIPTION	DATE
		SEE SHEET 1	

9100291  
B

J2	FUNCTION	P28
1	AB08 -	1
2	AB07 -	2
3	AB06 -	3
4	CB04 +	4
5	AB04 -	5
6	CB13 +	6
7	CB08 +	7
8	CB06 +	8
9	AB10 -	9
10	CB15 +	10
11	CB04 +	11
12	CB07 +	12
13	AB11 -	13
14	AB12 -	14
15	CB05 +	15
16	AB05 -	16
17	CB11 +	17
18	AB13 -	18
19	OVXX +	19
20	HLTX -	20
21	CB10 +	21
22	AB14 -	22
23	N-EXEC -	23
24	AB01 -	24
25	CB12 +	25
26	AB15 -	26
27	AB00 -	27
28	AB04 -	28
29	CB14 +	29
30	AB03 -	30
32	AB02 -	32
35	GRD	35
36	CB02 +	36
38	CB01 +	38
39	CB03 +	39
40	CB00 +	40
31	SPARE	31
33	SPARE	33
34	SPARE	34
37	SPARE	37

J1	FUNCTION	P27
1	SS3X +	1
2	SELA +	2
3	SELA -	3
4	RUNX -	4
5	SS2X +	5
6	SELB +	6
7	GRD	7
8	STEP -	8
9	SS1X +	9
10	SELB -	10
11	GRD	11
12	RUNX +	12
13	SS3X -	13
14	SELX +	14
15	GRD	15
16	STEP +	16
17	SS2X -	17
18	SELX -	18
19	GRD	19
20	REPT -	20
21	SS1X -	21
22	SELU -	22
23	GRD	23
24	SELP +	24
27	ESTX -	27
30	SELP -	30
32	SELU +	32
33	+5V	33
34	+5V	34
37	+5V	37
38	+5V	38
40	SYRT -	40
25	SPARE	25
26	SPARE	26
28	SPARE	28
29	SPARE	29
31	SPARE	31
35	SPARE	35
36	+5 SENSE	36
39	SPARE	39

9100291  
B

NOTE: UNLESS OTHERWISE SPECIFIED

CODE IDENT NO.	SIZE	DRWG NO.	REV
21101	D	9100291	B
SCALE: NONE		SHEET 3 OF 3	