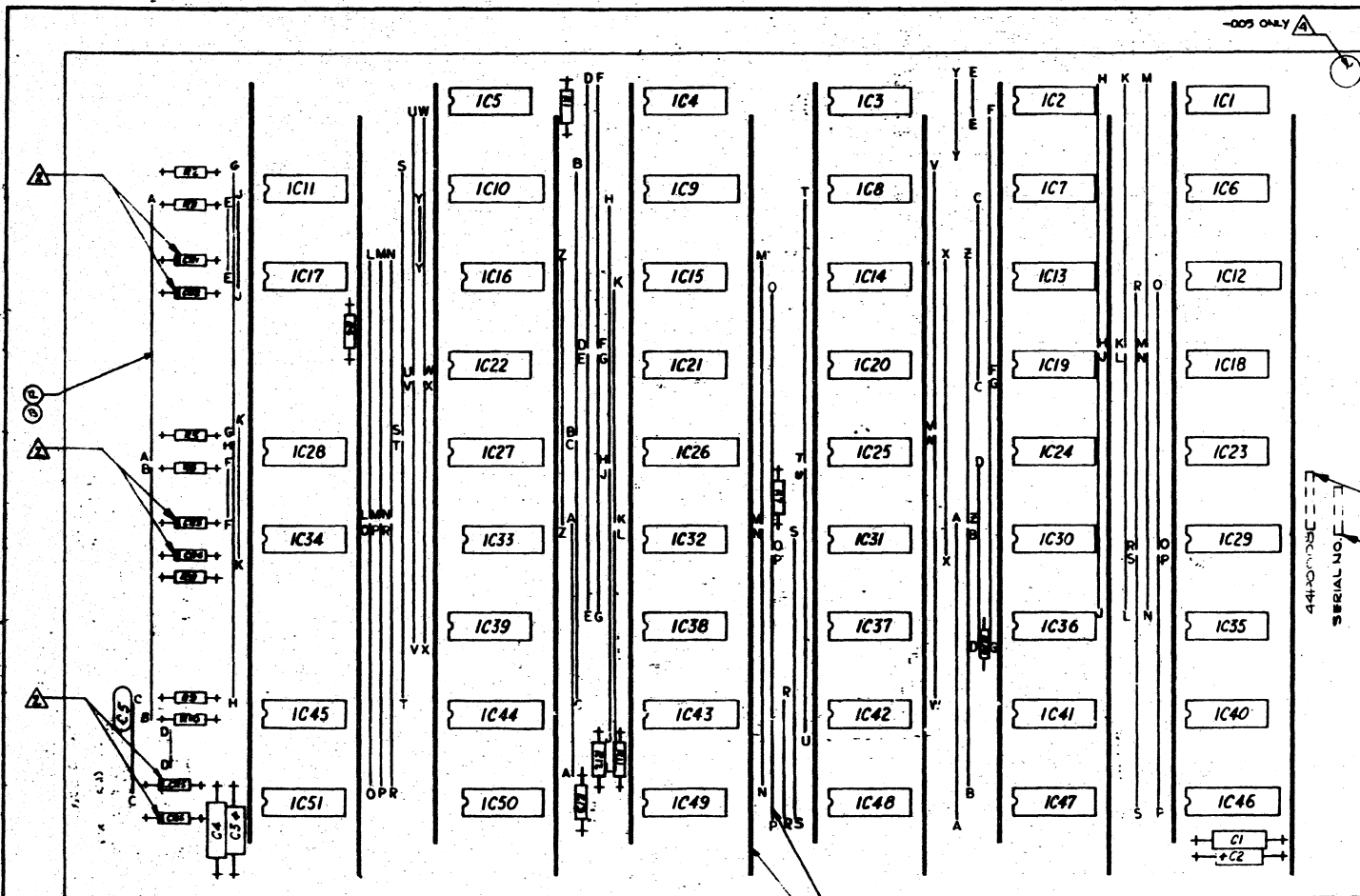


# OLDER 'L' OR 'I' MACHINE



REV	DATE	DESCRIPTION	APPROVED	DATE
A		PRODUCTION FLURSE		
B		REVISED PER E1538		
C		REVISED PER ENG CHANGE		
D		REVISED PER ENG 501/1020		
E		ADD NOTE 1 FOR 201/1020		
F		ADD NOTE 2 FOR 201/1020		
G		ADD NOTE 3 FOR 201/1020		
H		ADD NOTE 4 PER EN 4435		
I		ADD NOTE 5 PER EN 5533		
J		ADD REFERENCE DRAWING PER EN 5533		
K		REVISED G/N PER EN 5533		

NEAR SIDE  
NEAR SIDE

PART NUMBER	REMARKS
44P0008-000	BASIC WITH DIODES
44P0008-001	BASIC
44P0008-002	HUMISEAL WITH DIODES
44P0008-003	HUMISEAL
44P0008-004	HUMISEAL & CERAMICS IC'S WITH DIODES
44P0008-005	HUMISEAL & CERAMICS IC'S

SLOTS 7, 8, OR 9

- MARK BOARD SERIAL NUMBER IN 1/16 HIGH PERMANENT AND LEGIBLE CHARACTERS APPROXIMATELY WHERE SHOWN.
- PERMANENTLY APPLY .3 DIA YELLOW DOT TO BOARD APPROX WHERE SHOWN.
- AFTER FINAL TEST PRIOR TO ACCEPTANCE TEST (002, 003, 004 (-005 ONLY)) MARK OFF CONNECTOR CONTACT AREA ON BOTH SIDES OF ITEM NO. 1 & TOTALLY COAT BOTH SIDES OF ASSY WITH ITEM NO. 19.
- DIODE TO BE REPLACED BY TUNER FOR 44D0008-001, 003 & 005
- MARK APPROXIMATE DASH NUMBER AND THE REVISION LETTER OF THE PARTS LIST TO WHICH THE PART WAS MANUFACTURED APPROX WHERE SHOWN IDENT TO BE 1/2 HIGH CHARACTER, PERMANENT AND LEGIBLE

- REFERENCE DRAWINGS
- 440007 - BOMB DETAIL
  - 440008 - PARTS LIST
  - 440009 - LOGS DIAGRAM
  - 440010 - PHOTOGRAPH
  - 440011 - SILKSCREEN
  - 440012 - SOLDERMASK

REV	DATE	DESCRIPTION	APPROVED	DATE
1		ASSEMBLY		
2		DM 108		
3		REGISTER CARD		

SCALE 2/1

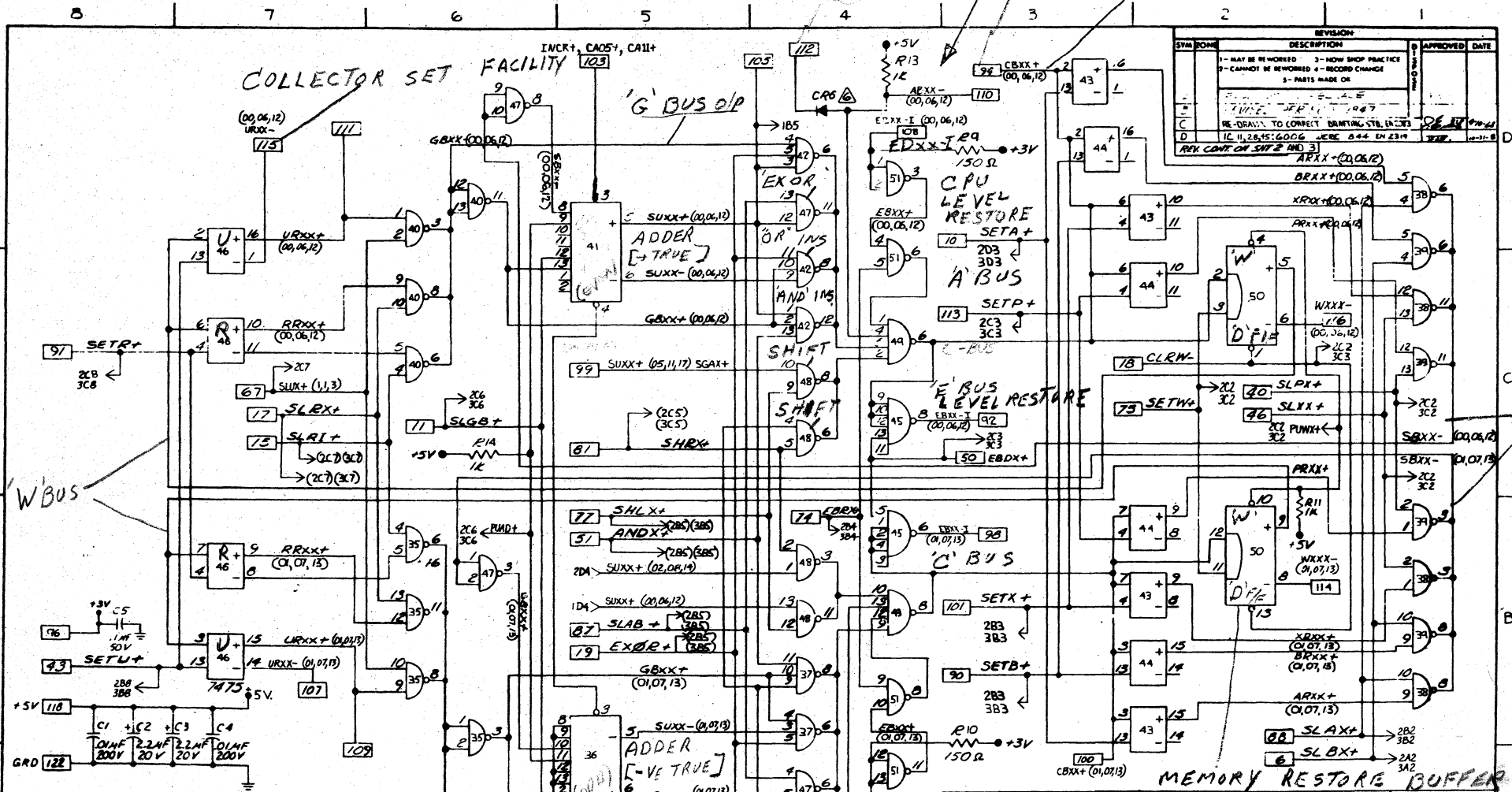
21101

440008

TOP IS MIRROR IMAGE OF BOTTOM

[ON ALL 3 PAGES]

C-BUS



REVISION		APPROVED	DATE
1	MAY BE REWORKED		
2	KNOW SHOP PRACTICE		
3	CANNOT BE REWORKED		
4	RECORD CHANGE		
5	PARTS MADE ON		

QTY	REQD	PER ASSY	PART OR IDENTIFYING NO	NOMENCLATURE OR DESCRIPTION	MATERIAL OR CODE IDENT	SPECIFICATION
LIST OF MATERIALS OR PARTS LIST						

DASH NO.	MKT ASSY	M/A QTY	TOLERANCES (UNLESS OTHERWISE SPECIFIED)	DR	CHK	DATE	REV
				ENGR	PROJ		
APPROVED				APPROVED			
NO NOT TEST SURFACES				SCALE NONE			

37 REGISTER CARD  
DM 108  
LOGIC DIAGRAM

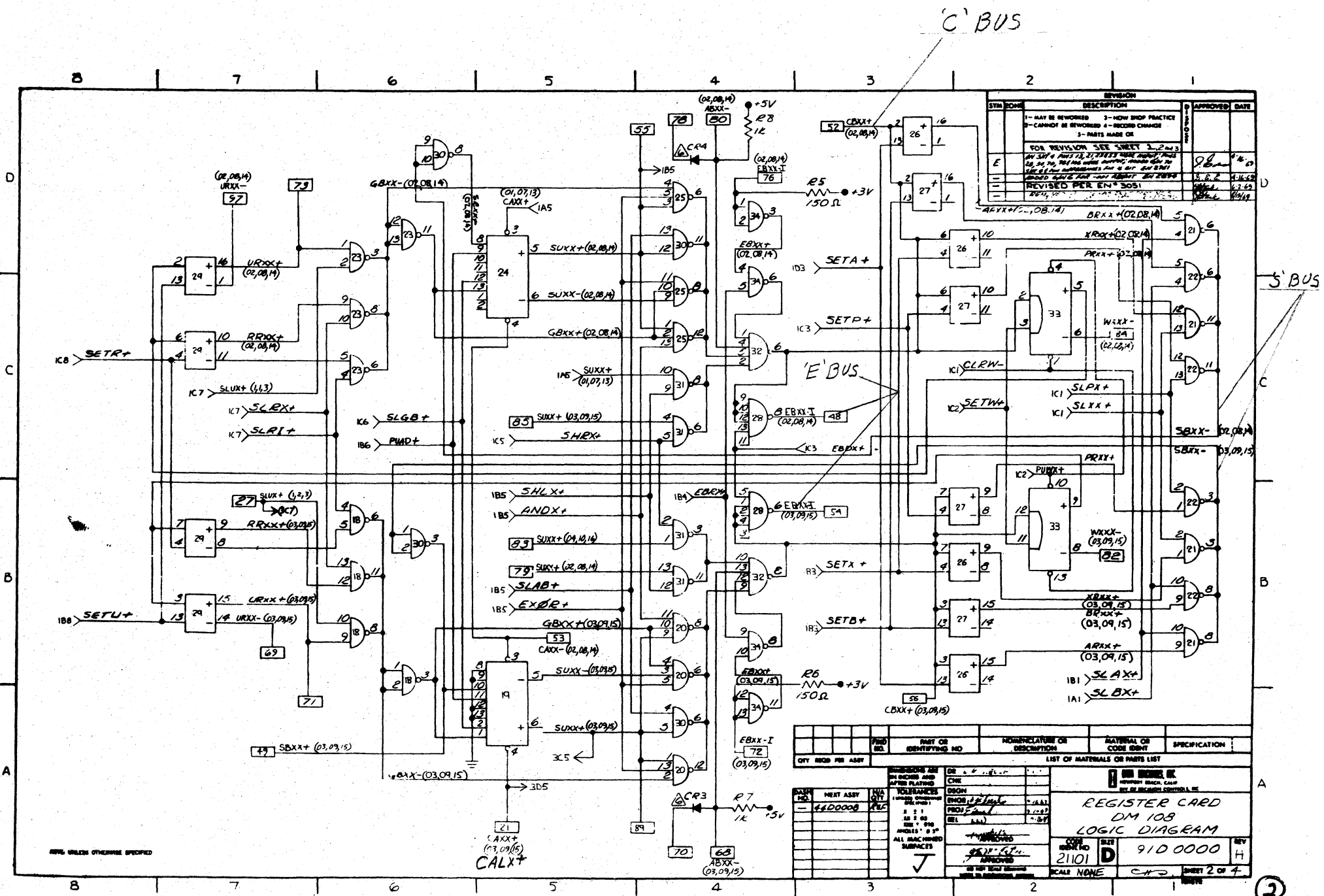
21101 D 91D 0000 H

SHEET 1 OF 4

- NOTE UNLESS OTHERWISE SPECIFIED**
- ALL RESISTORS ARE 1/4 W, ± 5%.
  - THE SYMBOLS AND → XIA INDICATES A SIGNAL SOURCE AND FLOW LOCATION CODE. THE FIRST DIGIT INDICATES SHEET NO. THE LETTER A HORIZONTAL ZONE AND THE SECOND DIGIT A VERTICAL ZONE.
  - POWER DISTRIBUTION TO IC'S 9 10 12, 26, 27, 29, 43, 44 44C: PIN 5=+5V, PIN 12=GRD.
  - POWER DISTRIBUTION TO IC'S PIN 7=GRD, PIN 1=5V (EXCEPTIONS NOTES)
  - DIVIDE TO BE REPLACED BY JUMPER FOR +40000B-001, 003, ... 005

REFERENCE DRAWING: +40000B-001 DETAIL, +40000C-ASSEMBLY, 40KIC-1 FACT. LIST, 37D000B ENGR. MASTER, 37D0G17 FILE, 97D0G18 FILE.

1



STATION	NO.	DESCRIPTION	APPROVED	DATE
		1 - MAY BE REWORKED		
		2 - NEW SHOP PRACTICE		
		3 - CANNOT BE REWORKED		
		4 - RECORD CHANGE		
		5 - PARTS MADE OR		
FOR REVISIONS SEE SHEET 3-2-103				
REVISED PER ENR 5051				

REV	DATE	BY	DESCRIPTION
1	03/09/15		
2	03/09/15		
3	03/09/15		
4	03/09/15		
5	03/09/15		
6	03/09/15		
7	03/09/15		
8	03/09/15		
9	03/09/15		
10	03/09/15		
11	03/09/15		
12	03/09/15		
13	03/09/15		
14	03/09/15		
15	03/09/15		
16	03/09/15		
17	03/09/15		
18	03/09/15		
19	03/09/15		
20	03/09/15		
21	03/09/15		
22	03/09/15		
23	03/09/15		
24	03/09/15		
25	03/09/15		
26	03/09/15		
27	03/09/15		
28	03/09/15		
29	03/09/15		
30	03/09/15		
31	03/09/15		
32	03/09/15		
33	03/09/15		
34	03/09/15		
35	03/09/15		
36	03/09/15		
37	03/09/15		
38	03/09/15		
39	03/09/15		
40	03/09/15		
41	03/09/15		
42	03/09/15		
43	03/09/15		
44	03/09/15		
45	03/09/15		
46	03/09/15		
47	03/09/15		
48	03/09/15		
49	03/09/15		
50	03/09/15		
51	03/09/15		
52	03/09/15		
53	03/09/15		
54	03/09/15		
55	03/09/15		
56	03/09/15		
57	03/09/15		
58	03/09/15		
59	03/09/15		
60	03/09/15		
61	03/09/15		
62	03/09/15		
63	03/09/15		
64	03/09/15		
65	03/09/15		
66	03/09/15		
67	03/09/15		
68	03/09/15		
69	03/09/15		
70	03/09/15		
71	03/09/15		
72	03/09/15		
73	03/09/15		
74	03/09/15		
75	03/09/15		
76	03/09/15		
77	03/09/15		
78	03/09/15		
79	03/09/15		
80	03/09/15		
81	03/09/15		
82	03/09/15		
83	03/09/15		
84	03/09/15		
85	03/09/15		
86	03/09/15		
87	03/09/15		
88	03/09/15		
89	03/09/15		
90	03/09/15		
91	03/09/15		
92	03/09/15		
93	03/09/15		
94	03/09/15		
95	03/09/15		
96	03/09/15		
97	03/09/15		
98	03/09/15		
99	03/09/15		
100	03/09/15		

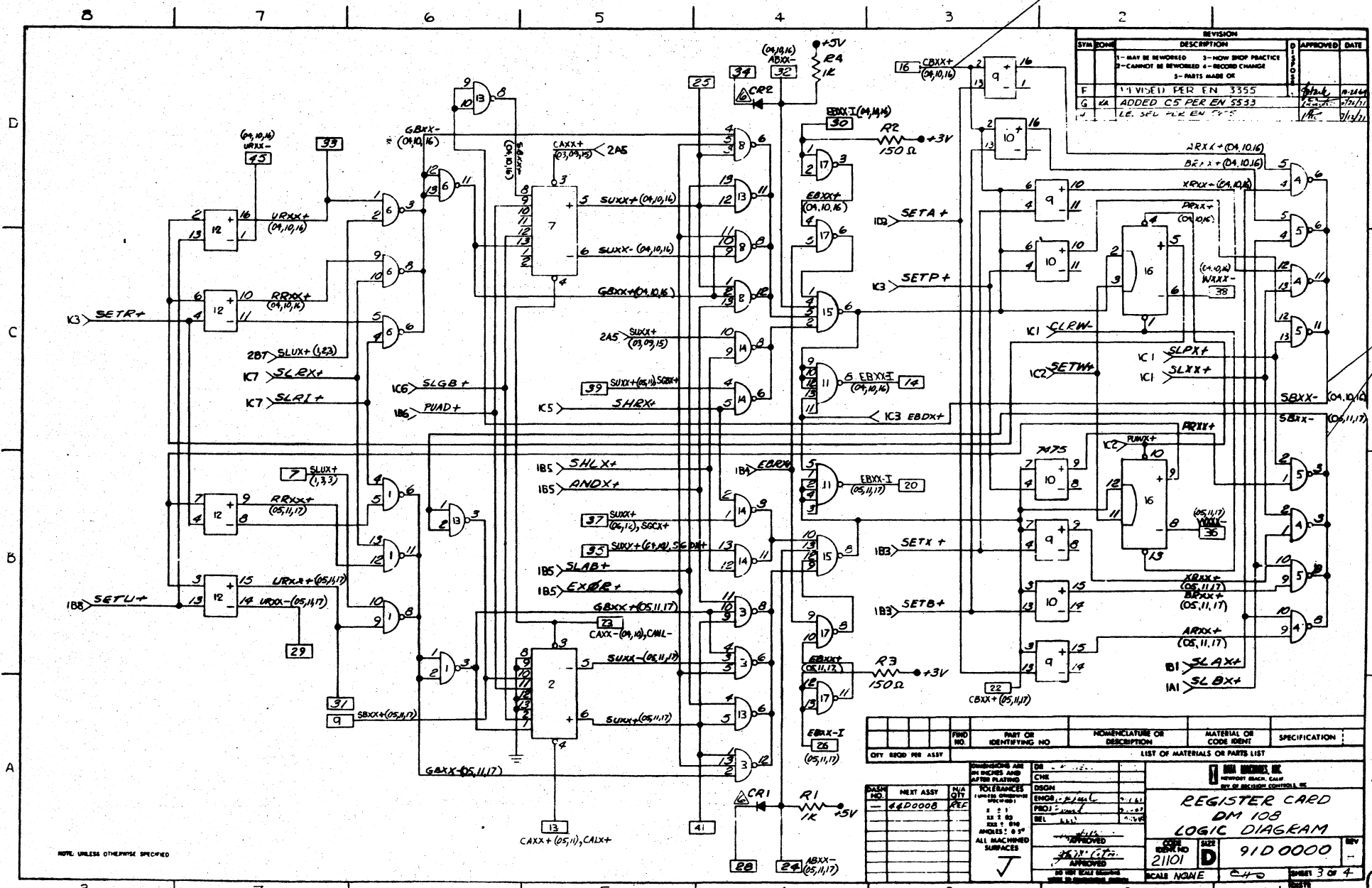
REGISTER CARD  
DM 108  
LOGIC DIAGRAM

REV 2101  
SCALE NONE  
SHEET 2 OF 4

UNLESS OTHERWISE SPECIFIED

'C' BUS

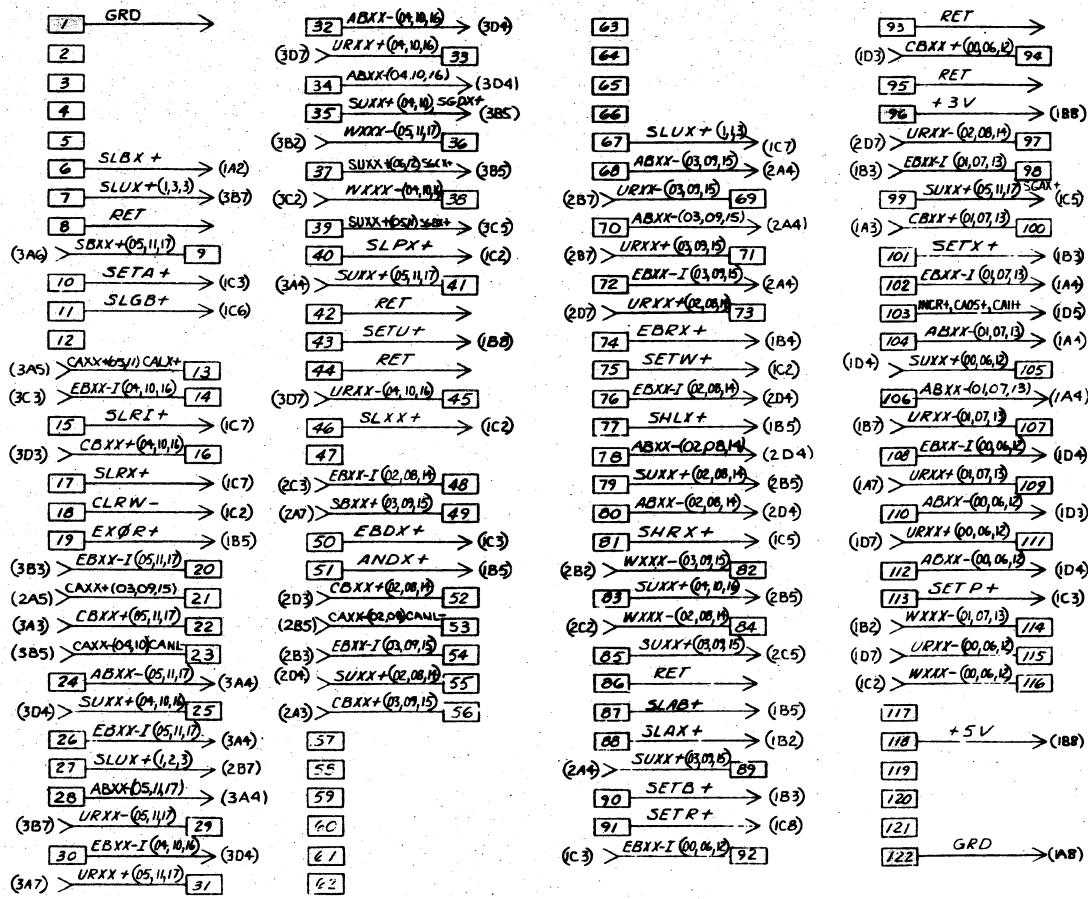
SYN		REVISION		APPROVED	DATE
NO.	DESCRIPTION	NO.	DESCRIPTION		
F	1-1 WISE 1) PER EN 3355	1	1 - MAY BE REMOVED		
G	ADDED C5 PER EN 5533	2	3 - NOW SHOP PRACTICE		
	L.E. SFL PER EN 7575	3	4 - INCREASE CHANGE		
		4	5 - PARTS MADE OF		



'S' BUS

OFF	REQD	PER	ASSY	PART OR IDENTIFYING NO	NOMENCLATURE OR DESCRIPTION	MATERIAL OR CODE IDENT	SPECIFICATION
LIST OF MATERIALS OR PARTS LIST							
DIMENSIONS ARE IN INCHES AND AFTER PLATING				DR - 1/2			
TOLERANCES (UNLESS OTHERWISE SPECIFIED)				D50M			
FRACTIONS: 1/16, 1/8, 3/16, 1/4, 3/8, 1/2, 5/8, 3/4, 7/8				ENGR. C. J. M. (11/17)			
DECIMALS: 0.015, 0.030, 0.045, 0.060, 0.075, 0.090, 0.105, 0.120, 0.135, 0.150, 0.165, 0.180, 0.195, 0.210, 0.225, 0.240, 0.255, 0.270, 0.285, 0.300, 0.315, 0.330, 0.345, 0.360, 0.375, 0.390, 0.405, 0.420, 0.435, 0.450, 0.465, 0.480, 0.495, 0.510, 0.525, 0.540, 0.555, 0.570, 0.585, 0.600, 0.615, 0.630, 0.645, 0.660, 0.675, 0.690, 0.705, 0.720, 0.735, 0.750, 0.765, 0.780, 0.795, 0.810, 0.825, 0.840, 0.855, 0.870, 0.885, 0.900, 0.915, 0.930, 0.945, 0.960, 0.975, 0.990, 1.005, 1.020, 1.035, 1.050, 1.065, 1.080, 1.095, 1.110, 1.125, 1.140, 1.155, 1.170, 1.185, 1.200, 1.215, 1.230, 1.245, 1.260, 1.275, 1.290, 1.305, 1.320, 1.335, 1.350, 1.365, 1.380, 1.395, 1.410, 1.425, 1.440, 1.455, 1.470, 1.485, 1.500				PROJ. 108 (11/17)			
ANGLES: 0.5°, 1.0°, 1.5°, 2.0°, 2.5°, 3.0°, 3.5°, 4.0°, 4.5°, 5.0°, 5.5°, 6.0°, 6.5°, 7.0°, 7.5°, 8.0°, 8.5°, 9.0°, 9.5°, 10.0°, 10.5°, 11.0°, 11.5°, 12.0°, 12.5°, 13.0°, 13.5°, 14.0°, 14.5°, 15.0°, 15.5°, 16.0°, 16.5°, 17.0°, 17.5°, 18.0°, 18.5°, 19.0°, 19.5°, 20.0°, 20.5°, 21.0°, 21.5°, 22.0°, 22.5°, 23.0°, 23.5°, 24.0°, 24.5°, 25.0°, 25.5°, 26.0°, 26.5°, 27.0°, 27.5°, 28.0°, 28.5°, 29.0°, 29.5°, 30.0°, 30.5°, 31.0°, 31.5°, 32.0°, 32.5°, 33.0°, 33.5°, 34.0°, 34.5°, 35.0°, 35.5°, 36.0°, 36.5°, 37.0°, 37.5°, 38.0°, 38.5°, 39.0°, 39.5°, 40.0°, 40.5°, 41.0°, 41.5°, 42.0°, 42.5°, 43.0°, 43.5°, 44.0°, 44.5°, 45.0°, 45.5°, 46.0°, 46.5°, 47.0°, 47.5°, 48.0°, 48.5°, 49.0°, 49.5°, 50.0°, 50.5°, 51.0°, 51.5°, 52.0°, 52.5°, 53.0°, 53.5°, 54.0°, 54.5°, 55.0°, 55.5°, 56.0°, 56.5°, 57.0°, 57.5°, 58.0°, 58.5°, 59.0°, 59.5°, 60.0°, 60.5°, 61.0°, 61.5°, 62.0°, 62.5°, 63.0°, 63.5°, 64.0°, 64.5°, 65.0°, 65.5°, 66.0°, 66.5°, 67.0°, 67.5°, 68.0°, 68.5°, 69.0°, 69.5°, 70.0°, 70.5°, 71.0°, 71.5°, 72.0°, 72.5°, 73.0°, 73.5°, 74.0°, 74.5°, 75.0°, 75.5°, 76.0°, 76.5°, 77.0°, 77.5°, 78.0°, 78.5°, 79.0°, 79.5°, 80.0°, 80.5°, 81.0°, 81.5°, 82.0°, 82.5°, 83.0°, 83.5°, 84.0°, 84.5°, 85.0°, 85.5°, 86.0°, 86.5°, 87.0°, 87.5°, 88.0°, 88.5°, 89.0°, 89.5°, 90.0°, 90.5°, 91.0°, 91.5°, 92.0°, 92.5°, 93.0°, 93.5°, 94.0°, 94.5°, 95.0°, 95.5°, 96.0°, 96.5°, 97.0°, 97.5°, 98.0°, 98.5°, 99.0°, 99.5°, 100.0°				REG. 108 (11/17)			
ALL MACHINED SURFACES				APPROVED			
IN THE REAL WORLD				APPROVED			
DATE: 11/17				SCALE: NONE			
SHEET 3 OF 4				SHEET 3 OF 4			

NOTE: UNLESS OTHERWISE SPECIFIED



SYN		REVISION		APPROVED		DATE	
1	1	1	1	1	1	1	1
MAY BE REWORKED		3-HOUR SHOP PRACTICE					
CANNOT BE REWORKED		RECORD CHANGE					
		5-PARTS MADE OR					
SEE SHEET 1, 2, 3							

THE BASIC INPUT/OUTPUT LIST SHOWN ON THIS SHEET AND THE CORRESPONDING TERMS ON THE PRECEDING THREE SHEETS APPLY TO AN 18-BIT MACHINE. FOR A 16-BIT MACHINE, THE TERMINOLOGY FOR THOSE PINS WHICH ARE DIFFERENT IS SHOWN BELOW.  
(N/C = NO CONNECTION)

- (3A6) > SBXX(05,11) NC 9
- (3A5) > CAXX(05,11) NC 13
- (3D3) > CBXX(04,10,16) NC 16
- (2A5) > CAXX(03,09,15) NC 21
- (3A3) > CBXX(05,11,17) NC 22
- (3B5) > CAXX(04,10,16) NC 23
- (3D4) > SUXX(04,10,16) NC 25
- 35 > SUXX(04,10,16) NC (3B5)
- 37 > SUXX(04,10,16) NC (3B5)
- 39 > SUXX(05,11,17) NC (3C5)
- (3A4) > SUXX(05,11,17) NC 41
- 79 > SUXX(02,08,14) NC (2B5)
- 83 > SUXX(04,10,16) NC (2B5)
- 85 > SUXX(03,09,15) NC (2C5)

SHEET NO.	CARD SLOT			BIT NUMBER
	1E	3	14	
SHEET 1	00	06	12	
SHEET 2	01	07	13	
SHEET 3	02	08	14	
	03	09	15	
	04	10	16	
	05	11	17	

QTY	REQD FOR ASBY	PRD NO.	PART OR IDENTIFYING NO.	NOMENCLATURE OR DESCRIPTION	MATERIAL OR CODE IDENT.	SPECIFICATION
LIST OF MATERIALS OR PARTS LIST						
<div style="display: flex; justify-content: space-between;"> <div style="width: 45%;"> <p>DR. L.P. WELCH</p> <p>DATE: 11-1-68</p> <p>BY: J. J. WELCH</p> <p>PROJ: 21101</p> <p>REV: 11/1/68</p> <p>ALL MACHINED SURFACES</p> <p>APPROVED</p> </div> <div style="width: 50%;"> <p>REGISTER CARD</p> <p>DM 10B</p> <p>LOGIC DIAGRAM</p> <p>CODE IDENT NO: 21101</p> <p>SITE: D</p> <p>91 D 0000</p> <p>REV: H</p> <p>SCALE: NONE</p> <p>SHEET: 4 OF 4</p> </div> </div>						

NOTE: UNLESS OTHERWISE SPECIFIED