



PUBLICATIONS UPDATE

BC/7 Business Computer

System Messages

**Programmer/Operator
Reference**

UP-8694 Rev. 3-A

This Library Memo announces the release and availability of Updating Package A to "SPERRY UNIVAC BC/7 Business Computer System Messages Programmer/Operator Reference", UP-8694 Rev. 3.

~~This update incorporates several new messages and minor changes and additions.~~

Copies of Updating Package A are now available for requisitioning. Either the updating package only or the complete manual with the updating package may be requisitioned by your local Sperry Univac representative. To receive only the updating package, order UP-8694 Rev. 3-A. To receive the complete manual, order UP-8694 Rev. 3.

LIBRARY MEMO ONLY

Mailing Lists
BZ, CZ, MZ, KB,
KC, KD, KE, KF,
KG and KH

LIBRARY MEMO AND ATTACHMENTS

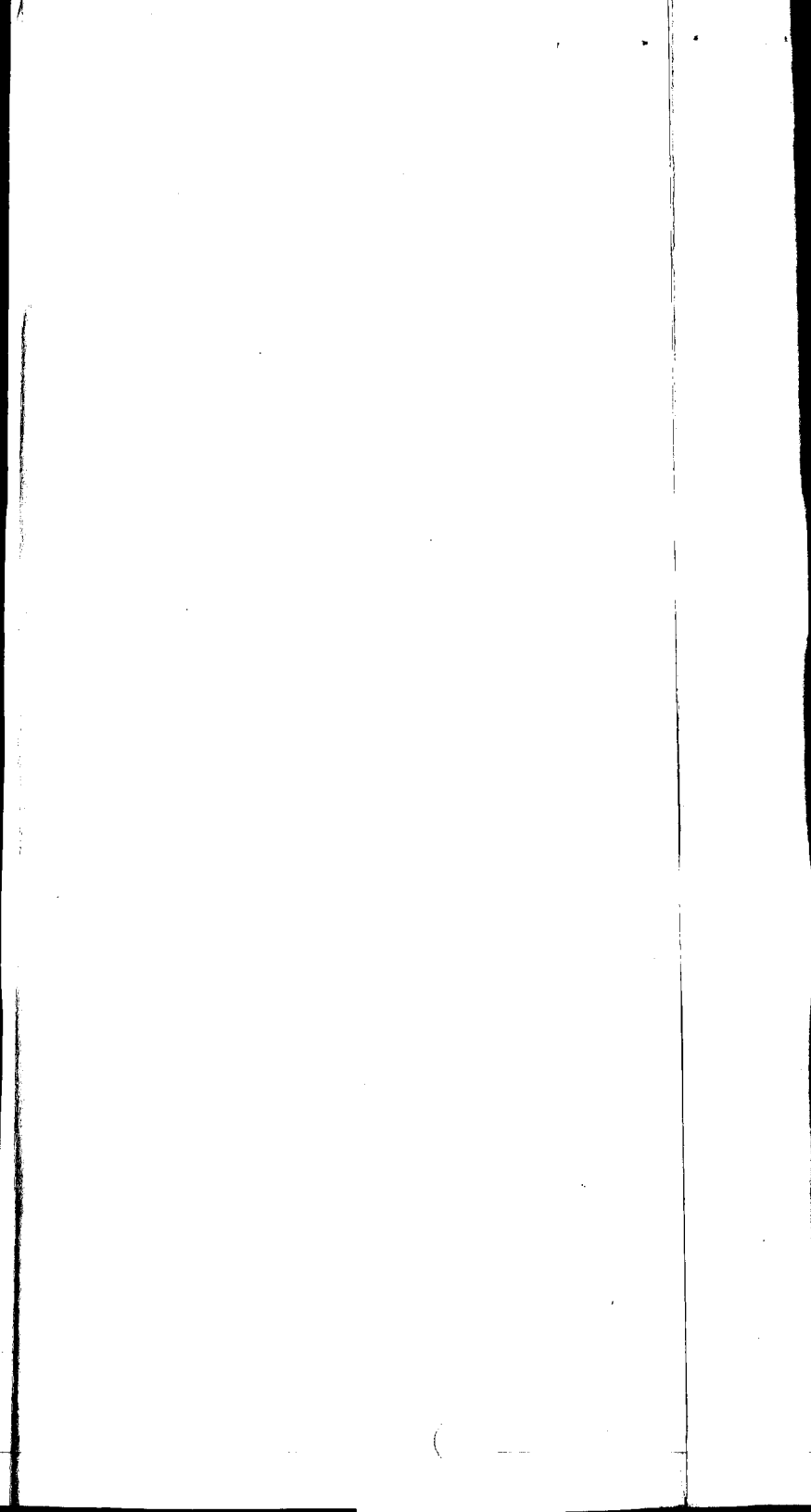
Mailing Lists 1, 2, 16 and 17
(Package A to UP-8694 Rev. 3,
36 pages plus Memo)

THIS SHEET IS

Library Memo for
UP-8694 Rev. 3-A

RELEASE DATE:

March, 1982



PAGE STATUS SUMMARY

**ISSUE: Update A – UP-8694 Rev. 3
RELEASE
LEVEL: 8.0 Forward**

Part/Section	Page Number	Update Level
Cover/Disclaimer		Orig.
PSS	1	A
Preface	1	Orig.
Contents	1	Orig.
1	Title Page 1 thru 8	Orig. Orig.
2	Title Page 1 thru 18 19 20 thru 49 50 51 thru 89	Orig. Orig. A Orig. A Orig.
3	Title Page 1 thru 5 6, 7 8 thru 13 14, 15 16 thru 24 25 26 27 28, 29 30, 31 32 thru 47 48 49 thru 92 92a 93 thru 106 107 thru 112 112a 113 114 thru 139	Orig. Orig. A Orig. A Orig. A Orig. A Orig. A Orig. Orig. Orig. A A* A Orig.
Appendix A	Title Page 1 2	Orig. Orig. A
User Comment Sheet		

* New pages



DUMP PARTITION-x 0=YES 1=NO D01

Reference suffix number D01.

/DUMP xxxxxx/ TO xxxxxx/ COPY

REST

The requested dump/restore program is running with the volumes indicated.

DUMP/RESTORE ERROR COPYxx

Reference suffix number COPYxx.

DUPLICATE FIELDS PRESENT

INQ

DUPLICATE FILES INVALID COPY06

Reference suffix number COPY06.

DUPLICATE KEY R18

Reference suffix number R18.

DUPLICATE SEQ. NUMBER COPY56

Reference suffix number COPY56.

Dx/ FILE COUNT INVALID COMP42

Reference suffix number COMP42.

Dx/SYSDIR INVLD FORMAT COPY21

Reference suffix number COPY21.

Dx/SYSDIR INVLD xxxxxxxx COPY24

Reference suffix number COPY24.

Dx/SYSDIR NOT EMPTY

Reference suffix number DELT36.

Dx/SYSLIB OUTPUT INVALID BULD44

Reference suffix number BULD44.

Dx/xxxxxx/BAD DISK PREP01

Reference suffix number PREP01.

Dx.xxxxxxxx ELT INVALID COPY36

Reference suffix number COPY36.

Dx/xxxxxxx READ ERROR DISPO1

Reference suffix number DISPO1.

Dx/xxxxxx/READ ERROR DPRT01

Reference suffix number DPRT01.

Dx/xxxxxxxSEQ ERROR MERG27

Reference suffix number MERG27.

Dx/SYSLIB OUTPUT INVALID COPY44

Reference suffix number COPY44.

Dx/xxxxxxx IS PRIVATE DISP12

Reference suffix number DISP12.

Dx/xxxxxxxxELT COUNT COPY32
Reference suffix number COPY32.

Dx/xxxxxxxx EXISTS M05
Reference suffix number M05.

Dx/xxxxxxxx FILE INVALID COMP38
Reference suffix number COMP38.

Dx/xxxxxxxxFILE INVALID COPY38
Reference suffix number COPY38.

Dx/xxxxxxxx FILE INVALID DISP05
Reference suffix number DISP05.

Dx/xxxxxxxxFILE I/O ERROR M08
Reference suffix number M08.

Dx/xxxxxxxx IS PRIVATE COMP12
Reference suffix number COMP12.

Dx/xxxxxxxxNO DISK SPACE M03
Reference suffix number M03.

Dx/xxxxxxxxNOT DELETED DELT31
Reference suffix number DELT31.

Dx.xxxxxxxxxNOT FOUND DELT30
Reference suffix number DELT30.

Dx/xxxxxxxx NOT SORTED COMP28
Reference suffix number COMP28.

Dx/xxxxxxxx NOT SORTED COPY28
Reference suffix number COPY28.

Dx.xxxxxxxxxNOT UNIQUE RENM31
Reference suffix number RENM31.

Dx.xxxxxxxxx(y) COPY37
Reference suffix number COPY37.

Dx/xxxxxxxxNOT UNIQUE RENM30
Reference suffix number RENM30.

Dx/xxxxxxxx TYPE INVALID DELT32
Reference suffix number DELT32.

Dx/xxxxxxxxTYPE INVALID ERSE32
Reference suffix number ERSE32.

Dx/xxxxxxxxTYPE INVALID RENM32
Reference suffix number RENM32.

Dx.xxxxxxxxx WAS UPDATED COMP02
Reference suffix number COMP02.

MEMORY BANK n DOWN S96
Reference suffix number S96.

MEMORY DUMP **SYS**
The main storage dump program is in execution.

MEMORY OVERFLOW S53
Reference suffix number S53.

MEMORY PARITY ERROR **COMM**
The MCLA has detected a main storage parity error. Call your Sperry Univac customer engineer.

**** MENU NAME/SESSION ID NOT FOUND **** **SPO0**
The entered menu name or session identifier to selection 4 and 5, respectively, cannot be found in the queue. The menu name or session identifier entered will flash. You press ERROR RESET and then reenter the desired name.

MENU PROCEDURE XXXXXX/XXXXXXXXX.XXXXXXXXXX CONTAINS MORE THAN 255 /ITEM STATEMENTS **MENU**

MENU PROCEDURE XXXXXX/XXXXXXXXX.XXXXXXXXXX DOES NOT START WITH /ID STATEMENT **MENU**

MENU PROCESSOR CANCELLED **MENU**
The menu processor has been cancelled due to an unrecoverable error.

MESSAGE WAITING X10
Reference suffix number X10.

MISPLACED 'ACS' ERROR SORT26
Reference suffix number SORT26.

MISPLACED 'HDR' ERROR SORT31
Reference suffix number SORT31.

MISPLACED 'KEY' ERROR SORT51
Reference suffix number SORT51.

MISPLACED 'OUT' ERROR SORT41
Reference suffix number SORT41.

MODE = xxxxx DISCONNECTED **DCT1**
The communications line has been disconnected under the DCT 1000 emulator.

MODE=BATCH IDLE **DCT1**
The RBT has no data to be transmitted or received in batch mode under the DCT 1000 emulator.

MODE=BATCH RECEIVING **DCT1**
The RBT is receiving data in batch mode under the DCT 1000 emulator.

MODE=BATCH TRANSMITTING **DCT1**
The RBT is transmitting data in batch mode under the DCT 1000 emulator.

MODE=INTER IDLE **DCT1**
The RBT has no data to be transmitted or received in interactive mode under the DCT 1000 emulator.

MODE=INTER RECEIVING DCT1
 The RBT is receiving data in the interactive mode under the DCT 1000 emulator.

MODE=INTER TRANSMITTING DCT1
 The RBT is transmitting data in the interactive mode under the DCT 1000 emulator.

MODE=STOP DCT1
 The RBT is in a stop state under the DCT 1000 emulator.

MODE= xxxxx UNCONNECTED DCT1
 The DCT 1000 emulator has been loaded, the MCLA has been loaded, but the line connection has not been made. A dial out or wait for an incoming call is required if the line is a switched line.

MON CALL ERR S90
 Reference suffix number S90.

MORE THAN 32 /SCREEN VARIABLES SPECIFIED FOR ONE SCREEN DISPLAY SCRE

MOUNT xxxxxx/ CATA09
 Reference suffix number CATA09.

MOUNT /xxxxxx/ COPY14
 Reference suffix number COPY14.

MOUNT FORM xxxx ON Pn 046
 Reference suffix number 046.

MOUNT FORM=xxxxx ON UNIT=xx M04
 Reference suffix number M04.

MOUNT NEXT VOL ON UNIT=Tx F97
 Reference suffix number F97.

MOUNT 1ST VOL ON UNIT=Tx F98
 Reference suffix number F98.

MOUNT SPCL FORMS READY — KEYIN 5 OFLN
 A forms halt has been encountered while processing the RBTPTR file. Make sure the forms are loaded. If you want to bypass the enter-form-length message, enter PROGn,2,1. If the form length is not specified on the RBTPTR file, the system default will be used.

MOUNT STD FORMS ON Px D04
 Reference suffix number D04.

MOUNT VSN=xxxxxx ON UNIT=xx F99
 Reference suffix number F99.

MOUNT VSN=xxxxxx ON UNIT=Dx M27
 Reference suffix number M27.

MOUNT /xxxxxx/ COMP14
 Reference suffix number COMP14.

MULTI-VOL FILE FOUND RENM33
 Reference suffix number RENM33.

MULTIVOLUME FILE COPY03
 Reference suffix number COPY03.

C01 DATA CONNECTION LOST C01

The communications line connection has been lost. A communications line adapter (CLA) output command could not be sent because of continuous carrier loss from host computer site.

Action:

1. CANCEL
2. Regain the line connection and resume RBT Operation.

C02 FORM CONTROL RUNAWAY C02

A forms control character (FF or VT) was detected in the incoming message, but the corresponding character was not found in the emulated form control loop.

Action:

1. CANCEL
2. Correct the forms control cards.
3. Reinitialize the RBT.
4. RERUN

C05 PUNCH FILE TERMINATED C05

The RBT punch file was terminated due to an unrecoverable hardware punch failure.

Action:

1. CONTINUE to initiate the idle mode.
2. Refer to the hardware error recovery procedures in Section 3 to correct the problem.
3. Continue operation if desired.
4. If problem persists, repeat step 1 or CANCEL.

C06 READER FILE TERMINATED C06

The RBT card reader file was terminated due to an unrecoverable hardware card reader failure.

Action:

1. CONTINUE to initiate the idle mode and set EOT.
2. Refer to hardware recovery procedures in Section 3 and correct the problem.
3. Continue operation if desired.

C07 PRINTER FILE TERMINATED C07

The RBT printer file was terminated due to an unrecoverable hardware printer failure.

Same as C05

C08 KEYIN IGNORED C08

Either an invalid key in response or an invalid unsolicited response was entered through the operator console.

Also, this occurs if you transmit a send BEL message without issuing a stop command first.

CONTINUE to initiate the idle mode. Check your keyin command, then retry.

C09 NO DATA FROM REMOTE C09

No data was sent from host computer site in response to a probe (DC1). This indicates that the host has no data.

CONTINUE to initiate the idle mode. This is not an error message.

C10 TELEPHONE ALERT C10

A BEL message has been received indicating that the host site wishes to go to voice communication.

Action:

1. Press the TALK switch on the modem and talk with the operator at the host site.
2. After completion, enter one of the following:
 - a. CONTINUE
 - b. RESPON, PROGn,4,2,1 to stop

C11 MCLA DIAGNOSTICS FAILURE C11

The resident microcoded line adapter (MCLA) diagnostics, executed at power-on/clear time, have failed to complete successfully.

Action:

1. CANCEL
2. Notify the Sperry Univac field engineer for MCLA service.

C12 MCLA IS BUSY CONTINUOUSLY C12

A MCLA hardware failure has occurred.

Action:

Same as C11

C13 MCLA IS NOT INSTALLED C13

The MCLA is not installed properly.

Action:

Same as C11

CATA01 xxxxxxxx ALREADY CATALOG CATA01

A file by the name, xxxxxxxx, has already been cataloged.

Action:

Select one of the following.

1. CANCEL to terminate catalog requests.
2. IGNORE to bypass the current display file catalog request.
3. CONTINUE to replace the current entry.

CATA05 xxxxxxxx NOT ON VOLUME CATA05

The file name xxxxxxxx was not on the volume referenced.

Action:

Select one of the following.

1. CANCEL
2. IGNORE and cataloging will continue with the next request.

CATA06 NO FILES ON DISK CATA06

The device or volume specified on the SCL statement was empty and contained no files.

Action:

CANCEL

CATA07 FILENAME KEY NOT ON VOLUME CATA07

During a volume or index file cataloging function, the key portion of an indexed file was not found on the existing volume.

Action:

Select one of the following.

1. CANCEL and RERUN specifying the volume or device on which the key file resides.
2.
 - a. IGNORE
 - b. If performing a catalog volume function, the catalog function will continue to catalog remaining files on the volume.
 - c. If performing an index catalog function, the key file not found is ignored.

CATA08 SOME FILES NOT CATALOG CATA08

While cataloging files on a volume, one or more files were detected as being part of multivolume files but were not the first volumes of those files.

All single-volume files, and those multivolume files whose first volume is the volume being cataloged, are cataloged.

Multivolume files whose first volume is on a volume other than the volume being cataloged will not be cataloged.

Action:

1. CONTINUE
2. Display the volume.
3. Display the directory.
4. Examine the listing to determine which files were not cataloged.
5. Mount the first volumes of the multivolume files you wish to catalog.
6. RERUN

CATA09 MOUNT xxxxxx/CATA09

The volume to be cataloged was not mounted.

Action:

1. CANCEL
2. Mount the volume.
3. CONTINUE

CATA10 UNIT/VSN NOT STATED CATA10

An attempt was made to catalog a file, and the unit or volume serial number was not specified.

Action:

1. CANCEL
2. Correct the statement to include either the unit number or volume serial number.
3. RERUN

CATA35 CONTROL STMT INVALID CATA35

One of the following errors has occurred:

- An invalid device was specified.
- The control statement is invalid.

Action:

1. CANCEL
2. Examine and correct the SCL statement.
3. RERUN

CODExx WORKSTATION I/O ERROR CODExx

An attempt was made to read from or write to a workstation and an unrecoverable error has occurred.

Action:

1. CANCEL
2. Place the workstation online and initiate the SCL mode.
3. RERUN
4. If the trouble persists, record the error code number (xx) and notify your Sperry Univac customer engineer.

COMP01 DESCRIPTOR READ ERROR COMP01

An unrecoverable error has occurred; the element descriptor on a library is in error.

Action:

1. CANCEL
2. Display both input and output libraries.
3. Attempt to determine the reason for the error.
4. Remake the library.
5. RERUN

COMP02 Dx.xxxxxxxx WAS UPDATED COMP02

A single-element compare resulted in the output element specified as having its descriptor record updated or changed. This could be from a patch or similar change.

Action:

1. CANCEL
2. Check to determine whether or not changes were made to the element.
3. RERUN using the correct element.

COMP10 /xxxxxx/ WRONG VOLUME COMP10

The volume serial number, indicated in the error message, is not the same as the volume serial number that was dumped to the dump/restore media in the control statement.

Action:

1. CANCEL
2. Mount the volume that conforms to the dump/restore media.
3. RERUN

COMP11 /xxxxxx/ NOT D/R VOLUME COMP11

The volume specified in the error message is not a valid dump/restore volume.

Action:

1. CANCEL
2. Mount the proper dump/restore volume.
3. RERUN

COPY04 FILE xxxxxxxx OMITTED COPY04

This message is displayed in response to a CONTINUE response to COPY01 and displays the file name (xxxxxxx) on which the error occurred.

Action:

Select one of the following.

1. CONTINUE to omit file in error from output volume.
2.
 - a. CANCEL to terminate copy.
 - b. RERUN using the backup copy.
 - c. Obtain a copy of the omitted file by performing a file copy.
 - d. If trouble persists, use a backup volume.

COPY05 MAX FILES OVFLOW ERROR COPY05

The output volume has insufficient room to accommodate all the files from the input volume.

Action:

Select one of the following

1. CANCEL
2. CONTINUE to copy only those files that can fit on the output volume.

COPY06 DUPLICATE FILES INVALID COPY06

A file name on the input volume already exists on the output volume while copying a volume.

Action:

Select one of the following.

1. CANCEL
2. CONTINUE. The duplicate file on the output volume will be deleted and the input volume will be copied to the output volume.

COPY07 MAX TRACK OVFLOW ERROR COPY07

The output volume has insufficient room to accommodate all the files from the input volume.

Action:

Select one of the following:

1. CANCEL
2. CONTINUE to copy only those files that can fit on the output volume.

COPY08 TRACK ADDRESS INVALID COPY08

During a volume copy, the input or output volume contains invalid extent information.

Action:

1. CANCEL
2. Display the input volume (or output volume, if ADD-YES processing is involved) to determine the file in error. The display will indicate the file in error.
3. Reconstruct the volume in error.
4. RERUN.

COPY09 DEVICE TYPE ERROR COPY09

Unrecoverable program error has occurred.

Action:

1. CANCEL
2. Initiate a system dump.
3. Notify your Sperry Univac system analyst.

COPY10 /xxxxxx/ WRONG VOLUME COPY10

A wrong volume (xxxxxx) was mounted on the removable disk drive when performing a copy using the fixed disk drive.

Action:

Select one of the following.

1. CANCEL to terminate the job.
2. a. Mount the correct volume on the removable disk drive.
b. CONTINUE
3. IGNORE to ignore the statement; processing continues with the next statement in the control stream.

COPY11 BOOT NOT ON DX COPY11

A copy function using ADD-BOOT was attempted from device DX/ but failed because the boot program was not found on the volume.

Action:

1. CANCEL
2. Mount the volume containing the boot program.
3. RERUN

COPY12 USING ACTIVE SYSRES COPY12

The active SYSRES volume is about to be destroyed during the current operation that will use the active system SYSRES volume as a scratch area.

Action:

Select one of the following.

1. CONTINUE to complete the current operation; the active SYSRES will be destroyed, and the system must be reloaded using the backup SYSRES after the operation is completed.
2. CANCEL; the current operation is terminated and the SYSRES volume remains intact.

COPY13 /xxxxxx/ RESERVE ERROR COPY13

An error has occurred while attempting to reserve a storage device for volume copy processing using the dump/restore utility.

Action:

1. CANCEL
2. Ensure that the correct volumes are mounted.
3. RERUN

COPY14 MOUNT /xxxxxx/ COPY14

This is a mount message that identifies the next volume for the dump/restore utility to process.

Action:

Select one of the following.

1. Mount the volume and CONTINUE.
2. CANCEL if the next volume is not available.

COPY15 REPREP /xxxxxx/ COPY15

An attempt to process the volume indicated during dump/restore resulted in errors; the volume requires reprep.

Action:

Select one of the following:

1. a. CANCEL
- b. Mount another dump/restore volume with the same volume serial number.
- c. RERUN
2. a. CANCEL
- b. Initiate a prep of the volume in the message.
- c. Enter RESPON,8,4 to continue processing.

COPY16 /xxxxxx/ NOT D/R VOLUME COPY16

The dump/restore volume indicated was found to be unacceptable for processing as a dump/restore volume.

Action:

1. CANCEL
2. Mount the correct dump/restore volume; ensure that the sequence number is correct.
3. RERUN

COPY17 /xxxxxx/ EMPTY VOLUME COPY17

The dump/restore volume indicated was empty and contained no files. A volume that is to be dumped must contain files.

Action:

CANCEL

COPY19 INPUT FILE COUNT ERROR COPY19

The number of active files found on the input volume does not agree with the file count in the volume control information.

Action:

Select one of the following.

1. CANCEL
2. CONTINUE to copy those files found to be acceptable.

COPY20 FROM KEY *NOT* FOUND COPY20

The FROM key or STARTING key specified on the secondary control statement for the SELECT key option could not be found in the input file.

Action:

Select one of the following.

1. CANCEL
2. CONTINUE to copy the key and data portions of records until the TO key has been satisfied.

COPY21 Dx/SYSDIR INVLD FORMAT COPY21

The SYSDIR file allocated on unit Dx is either compromised or is in the improper format and cannot be copied.

Action:

1. CANCEL
2. Reallocate the SYSDIR file
3. RERUN

COPY22 SMALL SYSDIR ON OUTPUT COPY22

The output volume SYSDIR file is too small to contain all the entries from the input SYSDIR file.

Action:

1. CANCEL
2. Either reallocate a larger output SYSDIR file or reduce the number of entries on the input SYSDIR file by decataloging unnecessary files.
3. RERUN

COPY23 INPUT SYSDIR IS INVALID COPY23

The internal entry count for the number of entries in the SYSDIR file does not equal the actual number of entries in the SYSDIR file.

Action:

1. CANCEL
2. Select one of the following.
 - a. Display the SYSDIR file; an error message will appear. Refer to the corrective action for the message.
 - b. (1) Erase the input SYSDIR file.
(2) Recatalog desired files.
(3) RERUN.

COPY24 Dx/SYSDIR INVLD LIBRARY COPY24

The SYSDIR file was allocated as a library and not a sequential file. The SYSDIR file must be a sequential file.

Action:

1. CANCEL
2. Reallocate the SYSDIR file as a sequential file.
3. RERUN.

COPY25 NO AVAILABLE xxxxxxxx COPY25

When the xxxxxxxx contains READER, one of the following has occurred:

- The UPDATE-YES keyword parameter was specified for a source or procedure element and no data reader was available.
- READER was entered as the first correction data statement for a load element copy and no data reader was available.

Action:

Select one of the following.

1. a. CANCEL
b. RERUN when a data reader is available.

COPY56 DUPLICATE SEQ NUMBER COPY56

A duplicate sequence number was encountered when reading in a load module. The sequence numbers are in columns 73 through 80.

Action:

For card reader input, select one of the following:

1. a. Remove the duplicate cards.
- b. Place the next sequential number in the card reader.
- c. CONTINUE.
2. a. CANCEL
- b. Correct the card sequence
- c. RERUN

For disk input:

1. a. CANCEL
- b. Correct the sequential input file to eliminate the duplicate number.
- c. RERUN
2. CONTINUE to ignore the duplicate numbers.

COPY57 REL/VER/PATCH INVALID COPY57

The release/version or patch level number did not correspond to or match the element being patched.

Action:

1. CANCEL
2. Enter the correct release/version and patch level numbers on the SCL statement.
3. RERUN

COPY58 ZERO STMTS PROCESSED COPY58

No text statements were encountered.

Action:

1. CANCEL
2. Enter the statements to be processed in the card reader.
3. RERUN

COPY59 ELEMENT COUNT IS INVALID COPY59

The library has been compromised. The element count for the library does not agree with the actual number of elements.

Action:

1. CANCEL
2. Display the library.
3. Copy the library in place.
4. Display the library.
5. Use the single element copy to add missing elements.
6. RERUN using the corrected library.

COPY60 IMBEDDED CONTROL STMT COPY60

During creation of a load element, an SCL statement was encountered before an :END statement was read.

Action:

1. CANCEL
2. Reorder the input to the proper sequence.
3. RERUN

COPY61 BLANK CARDS IN READER COPY61

More than four blank cards have been read and ignored for an element.

Action:

Select one of the following.

1. CANCEL
2. CONTINUE

COPY62 SEQ. OUTPUT FILE? COPY62

This allows you to verify that the output file for the copy operation is a sequential file.

Action:

Select one of the following.

1. CONTINUE if you do desire a sequential output file.
2. CANCEL if you do not desire a sequential output file.

COPY63 INVALID RECORD SIZE COPY63

The output record size of the sequential file is not 80 bytes for a copy element operation. This message is displayed as a result of a CONTINUE response to a COPY62 message.

Action:

1. CANCEL
2. Recreate the output file and specify a record size of 80 bytes on the FILE statement.
3. RERUN

COPY64 ELEMENT TYPE INVALID COPY64

One of the following has occurred:

- An attempt was made to copy a type D, F, or W element individually to a spooled file, to the printer, or to a punch, or from a spooled file to a library file.
- An attempt was made to copy an element from an IBM library of a type that is not supported by the file convert utility.
- An error exists in the RPG specification element used by the file convert utility.

Action:

1. CANCEL
2. If the error was an incorrect RPG specification element, correct the specification element and RERUN.

COPY70 STMT ADDRESS IS INVALID COPY70

The address of the data statement is lower than the load address of the element.

Action:

Select one of the following.

1. CONTINUE; correct and reenter the data statement.
2.
 - a. CANCEL
 - b. Correct the statement
 - c. RERUN

COPY71 FILE Dx/xxxxxxx IS FULL COPY71

One of the following has occurred:

- An attempt was made to copy elements to a library but there was insufficient room in the library to contain the specified elements.
- An attempt was made to output or add records to a data file, but there was insufficient room in the file for all the records.

Action:

For spooled input files:

1. Enter RESPON, PROG 1,8. Enter another output file name through the workstation or card reader to continue or the /EOD to CANCEL.

For sequential files, select one of the following:

1. CONTINUE; the copy runs to completion.
2. CANCEL

For nonspooled input files:

1. If the operation was a library copy:
 - a. CANCEL
 - b. Allocate a larger output library file.
 - c. RERUN
2. If selected elements were to be added to an existing library file:
 - a. CANCEL
 - b. Copy the output library file in place to remove deleted elements
 - c. RERUN
 - d. If the problem remains, allocate a new library file for the new elements.
 - e. RERUN
3. If an entire library file was to be added to an existing library file, select one of the following:
 - a. CONTINUE. The program will determine whether or not the file could be added after copying the output file in place to remove deleted elements (duplicates by element name and type of those to be added). If it is possible to add the file, the informational message BEGIN AUTOPACK will be displayed and the copy will continue. If there is not enough space to allow the file to be added to the output file, the COPY71 message will be redisplayed. A reply of CANCEL is then required.
 - b. CANCEL; delete unneeded elements from the output file and copy it in place; RERUN

For output data files, select one of the following:

1. CONTINUE; all the records written to the file during this run will be retained.
2.
 - a. CANCEL; if an add operation was being performed, the file will contain only records present before the run. If a copy operation was performed, the file will be marked as empty.
 - b. Allocate a larger output file.
 - c. RERUN

COPY72 WRITE ERROR COPY72

A recoverable write error has occurred on a type 3741 or 5444 volume while trying to create a file.

Action:

CANCEL

COPY73 LAST RECORD ERROR COPY73

This is an input format error. The last record on a type 3741 or 5444 volume or data set is inconsistent in chaining links.

Action:

1. CANCEL
2. Reconstruct the input
3. RERUN

COPY74 INVALID DEVICE ID COPY74

An attempt was made to output to a type 5444 volume.

Action:

CANCEL

COPY75 FILE EXTENT ERROR COPY75

This is an input format error. A file extent error was detected on a type 3741 or 5444 volume during conversion.

Action:

CANCEL

COPY76 FILE LOCATE ERROR COPY76

The file specified on the COPY statement could not be found on a type 3741 or 5444 volume during conversion.

Action:

1. CANCEL
2. Check that the file name specified on the COPY statement is correct.
3. RERUN

COPY77 READ ERROR COPY77

An unrecoverable read error has occurred on a type 3741 or 5444 volume while trying to convert the files on the volume.

Action:

CANCEL

COPY78 RECORD LENGTH 128 COPY78

This is a format error on the input file. A record length on the BC/7 volume greater than 128 bytes was detected during conversion.

Action:

CANCEL

COPY79 FILE ALLOCATION ERROR COPY79

An error has occurred during file conversion while trying to allocate an output file.

Action:

CANCEL

COPY80 TOO MANY ELEMENTS COPY80

The number of elements being copied from the input volume exceed the number of elements that can be stored in the output libraries.

Action:

Select one of the following.

1. a. CANCEL; the output file is intact for the elements copied.
- b. Copy the bypassed elements to another library, one element at a time.
2. RERUN the entire copy operation after allocating sufficient libraries as described in the system user guide.

COPY81 INPUT FILE INVALID COPY81

An error was detected while attempting to read the VTOC during file conversion indicating an input file is not structured properly.

Action:

1. CANCEL
2. Display the volume on the system on which it was created to check that the files on the input volume are in order.

COPY82 SOURCE CHAIN ERROR COPY82

The input file structure is invalid. A source record chain error has occurred during file conversion while attempting to decompress source records.

Action:

1. CANCEL
2. Attempt to rebuild the source input

COPY83 F1 RECORD BAD ENTRY COPY83

The input file format is invalid. The F1 record has a bad file entry during file conversion.

Action:

CANCEL

COPY84 ELEMENT SPEC ERROR COPY84

An error was encountered during the validation of RPG input specification statements describing the file; for example, statements out of order, field inconsistencies, etc.

Action:

CANCEL

COPY85 RECORD ID NOT MATCHED COPY85

An input record could not be matched with the RPG input specification statements describing the file.

Action:

CANCEL

COPY86 FIELD TYPE NOT MATCHED COPY86

The field type specified in the RPG input specification statements is not supported by file conversion.

Action:

CANCEL

COPY87 ERROR VSN=xxxxxx UNIT=Dx COPY87

One of the following errors occurred while attempting an IBM conversion copy:

- The volume serial number was missing for a volume copy convert.
- The file name was missing for a file copy convert.

Action:

1. CANCEL
2. Examine the SCL statement and add the missing item (VSN or file name).
3. RERUN

COPY88 FILES ON OUTPUT (CNT=0) COPY88

The convert utility has determined that files exist on the output volume.

Action:

Select one of the following.

1. CANCEL if you do not wish to write over files on the output volume.
2. CONTINUE if the correct volume is mounted and you wish to initiate the convert process.

COPY89 ERROR VSN=xxxxxx UNIT=DX COPY89

During an IBM conversion copy, an attempt was made to perform a gang operation and the element name was greater than six characters.

Action:

1. CANCEL
2. Reduce the element gang name to six characters.
3. RERUN

COPY90 ELEMENT TEXT NOT FOUND COPY90

An attempt was made to recover a source or procedure element in a library that contained no data.

Action:

1. CANCEL
2. Either RERUN using the backup library or recreate the element and RERUN.

COPY93 DUMP/RESTORE ERROR COPY93

The dump/restore operation was cancelled before all the steps were completed. This could be caused by errors such as:

- The statement describing the dump/restore operation was in error.
- The volumes required for the dump/restore operation were not available.

Action:

1. CANCEL
2. Correct the cause of the problem.
3. RERUN

COPY96 DUMP/RESTORE ERROR COPY96

A workstation was not available for the dump/restore operation.

Action:

1. CANCEL
2. RERUN when a workstation is available.

COPY97 DUMP/RESTORE ERROR COPY97

The dump/restore program has detected that the density of disk being dumped is 100 TPI while the system itself utilizes a density of 200 TPI.

The dump/restore program can accommodate the following:

- 200 TPI on a 200 TPI system
- 100 TPI on a 100 TPI system

Action:

1. CANCEL
2. RERUN using the proper density on the system.

COPY98 DUMP/RESTORE ERROR COPY98

All the devices referenced by the dump/restore are not available.

Action:

1. CANCEL
2. RERUN when all the required devices are available.

COPY99 DUMP/RESTORE ERROR COPY99

An attempt was made to perform a dump/restore using the SYSRES volume for the dump; SYSRES cannot be used for the dump.

Action:

1. CANCEL
2. RERUN using a volume other than the SYSRES volume.

This page is intentionally left blank.

F16 An attempt was made to access a nonlibrary file as a library file.

Action:

1. CANCEL
2. Check that the library name used is correct.

F17 The disk units requested in the SCL statement are not available for the job for one of the following reasons:

1. The units are being used.
2. The unit is set offline by the DEVICE statement.
3. A multivolume sequential file on a removable device was open and an attempt was made to open another file on it.

Action:

1. CANCEL
2. If the unit is offline, specify a unit that is online and not in use.
3. If the units are in use, either change the SCL statements to include available units or wait until the units are available.
4. RERUN

F18 An attempt was made to catalog a file in the system directory but the directory was full.

Action:

Select one of the following:

1.
 - a. CANCEL
 - b. Decatalog any unnecessary files.
 - c. Catalog the file.
2.
 - a. Erase SYSDIR.
 - b. Recatalog needed files.

If trouble persists, initiate a system dump and notify your Sperry Univac system analyst.

F19 Incorrect or missing FILE or ID statements were detected. This could be caused by one of the following:

1. An attempt was made to access a file without using either the volume serial number or the unit number, and the file was not cataloged.
2. The FILE statement did not specify either the volume serial number or unit number, and the file was not cataloged.
3. The ID statement was missing.
4. The FILE statement was missing, or the volume serial number or unit number was missing.

Action:

CANCEL and select one of the following:

1.
 - a. Catalog the file.
 - b. RERUN
2.
 - a. Add the missing ID or FILE statement.
 - b. RERUN
3.
 - a. Correct the SCL statement to include the volume serial number or unit number.
 - b. RERUN

- F1A An attempt was made to use the unit on which the system-resident disk was mounted.
- Action:
1. CANCEL
 2. RERUN using a different unit.
- F1B A cancel keyin was made in response to a mount message.
- Action:
- CANCEL
- F1C An unrecoverable program error has occurred.
- Action:
- Same as F01
- F1D The length of the block read from tape is less than the length of the block size specified in the program.
- Action:
1. CANCEL
 2. Ensure that the block size specified is equal to the blocksize on tape and RERUN.
 3. Otherwise, take a system dump and notify your Sperry Univac system analyst.
- F1E The length of the block read is greater than the length of the block specified in the program.
- Action:
1. CANCEL
 2. Ensure that the block size specified matches the block size on tape and RERUN.
 3. Otherwise, take a system dump and notify your Sperry Univac system analyst.
- F1F An attempt was made to access a tape, and the TAPE-YES keyword parameter was not specified on the MODE statement.
- Action:
1. CANCEL
 2. Enter the MODE statement and include the TAPE-YES specification.
 3. RERUN
- F20 Unrecoverable error has occurred.
- Action:
1. Take a dump.
 2. RERUN.
 3. If trouble persists, notify your Sperry Univac system analyst.

Action:

1. When the error message appears and tape movement occurs, select one of the following:
 - a. If the tape was blank, CANCEL, mount the correct tape, and RERUN.
 - b. If the tape file was left open, CANCEL and notify your Sperry Univac customer engineer.
2. When the error message appears and there was no tape movement, a hardware problem exists; perform the following:
 - a. CANCEL.
 - b. Notify your Sperry Univac customer engineer.

S07 DATA ERR ttt ss UNIT=xx S07

A data transfer error has occurred on the specified device (xx); the track (ttt) and sector (ss) numbers indicate where the error occurred.

Action:

Select one the following:

1. CONTINUE or IGNORE to retry the operation:
2. CANCEL.

S08 IOSP IO TIME S08

The I/O interface timer within the IOSP has expired. This is a fatal system check condition.

Action:

Notify your Sperry Univac customer engineer.

S09 IOSP PR TIME S09

The processor internal timer has expired. This is a fatal system check.

Action:

Notify your Sperry Univac customer engineer.

S10 IOSP INTFCE S10

The IOSP has detected a parity error on the interface. This is a fatal system check.

Action:

Notify your Sperry Univac customer engineer.

S11 FIXED DISK ON-LINE 1=YES S11

This message is an interrogation that occurs when a fixed disk is to be configured into the system; the question is whether the fixed disk subsystem is online and operational or not.

Action:

Enter 1 to configure the fixed disk subsystem.

S12 DMA MS ADDR S12

The DMA facility on the I/O support processor has generated an invalid processor address. This is a fatal system check condition.

Action:

Notify your Sperry Univac customer engineer.

S30 WS PRINTER NOT READY S30

The printer is not ready for one or more of the following reasons:

- The power is not on to the printer.
- The printer run switch is off.
- The printer mechanism is not secured.

Action:

Select one of the following:

1. CANCEL Print Request
2. Continue by making the printer ready.

S31 WS PRINTER PAPER OUT S31

The printer is out of paper.

Action:

Select one of the following:

1. CANCEL Print Request
2. Continue by reloading the printer with paper and making the printer ready.

S32 WS PRINTER DATA ERROR S32

A memory parity error or data transfer parity error has occurred on a print character.

Action:

Select one of the following.

1. CANCEL Print Request
2. Retry

S33 MOUNT FORM xxxx WS PRINTER S33

A new print file is starting and requires the operator to mount form xxxx.

Action:

Select one of the following:

1. CANCEL Print Request
2. Continue after mounting requested forms.

S34 IS THE FORM ALIGNED S34

This message is displayed after MOUNT FORMS, DATA ERROR, and PAPER LOW to allow print alignment.

Action:

Select one of the following:

1. CANCEL
2. CONTINUE if forms required alignment
3. IGNORE if forms are aligned

S50 ENTER 0—5 FOR SCW NUMBER S50 S

This message is issued when the system control workstation becomes inoperative. It solicits a workstation number response specifying the new SCW. The next message displayed after the response is an S51 message that allows you to verify the SCW selection made or an S52 message that indicates an invalid selection.

Action:

RESPON, then enter the new SCW number, using the combination of 4,2,1; for example, if workstation number 3 is to be the new SCW, enter RESPON,2,1.

S51 ENTER 0=YES FOR SCW=Wx S51 S

This message allows you to verify the selection made to the S50 message.

Action:

Enter 0 if (RESPON, ENTER) x specifies the correct new SCW number.

S52 INVALID SCW ASSIGNMENT S52 S

An invalid system control workstation assignment has been entered in response to messages S50 and S51.

Action:

Check that the number entered in response to message S50 is a valid workstation unit; if it is not, message S50 reappears in 10 seconds to allow you to reenter a correct unit number.

S54 KEY UNSOLICITED-xxxxxxx S54 P

This message is displayed after a SYSTM,U keyin to allow an unsolicited keyin to a program. The xxxxxxxx in the message specifies the program name.

Action:

Respond with SYSTM,n and RETURN, where n is the desired unsolicited console input code of (0—31).

S60 ROLL-OUT WRITE ERROR S60

A write error was encountered on disk during a rollout operation.

Action:

1. CANCEL
2. Reallocate the SYSROLL file.
3. Reload (IPL) the system.
4. RERUN

S61 ROLL-IN READ ERROR S61

A read error was encountered on disk during a roll-in operation.

Action:

Same as S60

S62 SYSROLL FILE NOT FOUND S62

The SYSROLL file cannot be found on SYSRES. The SYSROLL file must be allocated before rollout/roll-in can be used.

Action:

1. CANCEL
2. Reload (IPL) the system.
3. Use the FILE statement to allocate the SYSROLL file on SYSRES as follows:
Diskette — 220 sectors
Disk — 220 sectors
4. Enter /END statement after allocation is completed.
5. Reload (IPL) the system.
6. RERUN

S63 FILE xxxxxxxxyyy LEFT OPEN S63

This is a warning message. The file was left open during a previous use of SYSRES and was not terminated in an orderly way. The file is identified as follows:

xxxxxxx	File name
yyy	File type:
	<ul style="list-style-type: none"> ■ blank ■ (K) key portion of an index file ■ (D) data portion of an index file

This message may result from a system crash or abnormal termination of the file during processing. The file identified may be compromised; you may wish to check the contents of the file and restore the file, if necessary, depending on the previous use of the file.

Action:

Select one of the following.

1. CONTINUE; the file active use information is deleted from the SYSRES and initialization continues.
2. If a system file (SYSLIB, ALTLIB, etc) has been compromised, load from a backup SYSRES and restore the file.
3. CONTINUE, if the file compromised is other than a system file, and restore the file after the system has been initialized.

S64 AUTO FILE RECOV? 0=YES 2=NO S64

This message is displayed during file recovery at the point of initialization and allows you to specify whether or not you want to recover files automatically. Select the response as follows:

0=YES Enter RESPON,PROG1 to initiate automatic file recovery processing.

2=NO Enter RESPON,PROG1,2 if you do not wish to have automatic file recovery.

S70 ERROR ON LOAD OF UNIT-Wx S70 S

An I/O error occurred while attempting to reload (IPL) workstation Wx.

Action:

1. CONTINUE will retry loading of workstation.
2. If error persists respond CANCEL will turn workstation off and on.
3. If error still occurs contact your Sperry Univac customer engineer.

S71 DISK READ ERROR ELT-XWSIPL S71 S

A disk read error occurred while trying to load the workstation IPL code into memory. The element name is XWSIPL.

Action:

Select one of the following.

1. CONTINUE will retry read order.
2. CANCEL will terminate workstation IPL processing.
3. If error persists re-add element XWSIPL on disk and retry.

S72 ELEMENT xxxxxxx NOT FOUND S72

This message is displayed when a workstation load request has been issued and the required workstation initialization component is missing from the system resident disk (SYSLIB library). In this message, xxxxxxx is XWSIPL for workstation or XWSIPL1 for workstation with remote printer attached.

Action:

Select one of the following:

1. IGNORE to bypass loading the workstation
2. Reload (IPL) the system using the backup SYSRES.

S80 CANNOT READ VSN ON UNIT=Dx S80 S

A read error occurred while attempting to read the volume serial number of a disk. This could be the result of an unprepped disk, a defective disk, or defective track 0 on a disk.

Action:

Enter RESPON,1 to ignore if the disk is an unprepped disk being mounted for prepping. If the disk was prepped, select one of the following:

1. Enter RESPON to retry reading the volume serial number.
2. Enter RESPON,1 and initiate disk reconstruction procedure.

S81 /xxxxxx/ACTIVE ON UNIT-yy S81

This message occurs when normal file processing has not been completed on unit (yy) for volume (xxxxxx) and one of the following actions was taken by the operator:

- The volume (xxxxxx) was removed from unit (yy) and mounted on another unit.
- The volume (xxxxxx) was removed from unit (yy) and another volume was mounted on unit (yy).
- A tape volume (xxxxxx) on unit (yy) was rewound to load point.

NOTE:

If an unlabelled tape file is being processed, the volume serial number (xxxxxx) in the message will be / TAPE /.

Action:

Select one of the following.

1. For disk volumes only:
 - a. Remount the demounted volume in the unit indicated.
 - b. CONTINUE
2. For disk or tape volumes:
 - a. If the demounted volume is not available, remove the mounted volume from the indicated unit.
 - b. CONTINUE
 - c. Actions (a) and (b) will cause an S00 (NOT READY) message to be displayed for the unit when file processing accesses the active file. Responding CANCEL to the S00 message will allow file processing to be terminated. Note that when this condition occurs for output files, the file may be compromised.

S82 DISK FORMAT ERR ON UNIT-Dx S82

This format of the disk mounted on the unit indicated (Dx) is not correct.

Action:

Select one of the following.

1. CONTINUE to retry reading the volume serial number.
2. IGNORE if the disk is to be reprepped. In this case, the disk can remain mounted but its status is not known. This response should be used with great care if the mounted disk is not being reprepped; otherwise, the disk contents may be destroyed.

S83 DENSITY CONFLICT ON UNIT-Dx S83

This could be caused by one of the following:

1. The disk mounted in unit Dx is written in a density that is different than that of the physical unit. For example, a disk created on a 100 TPI disk drive is mounted on a 200 TPI disk drive.
2. An invalid device definition was made in the system configuration record.

Action:

Select one of the following.

1. a. Mount the disk with the correct density.
b. CONTINUE
2. Reconfigure the system on SYSRES if the device definition was invalid.
3. If the disk is going to be reprepmed for use on the device with the different density configuration, enter IGNORE.

CAUTION

If IGNORE is entered for any other purpose, the integrity of the disk's processing cannot be maintained.

S84 /xxxxxx/ WARNING ON UNIT Dx S84

This is a warning message indicating that a volume was demounted from the device Dx while an I/O was being processed. The program or volume may be compromised.

Action:

1. Remount the volume originally mounted on the device.
2. CANCEL
3. Rebuild the volume that was mounted at the time the warning message was received.
4. RERUN

S85 IO SP LS ADDR S85

A local storage address error has been detected by the I/O support processor in an access to local storage (applicable to BC/7-900 systems with fixed disk).

Action:

Notify your Sperry Univac customer engineer.

S86 IO SP LS PRY S86

A local storage parity error has been detected by the I/O support processor in an access to local storage (applicable to BC/7-900 systems with fixed disk).

Action:

Notify your Sperry Univac customer engineer.

S87

DUPLICATE VSNs UNIT-xx.yy S87

This error occurs as a result of two volumes with the same volume serial number being mounted. xx and yy indicate the units in which the volumes are mounted.

Action:

Select one of the following.

1. a. Demount the volumes with duplicate VSNs.
 b. Mount the specific volume desired.
 c. CONTINUE
2. IGNORE to continue processing with the duplicate VSNs mounted.

CAUTION

Exercise great care with this response because your files may be compromised, and catalog file processing is no longer valid when duplicate VSNs are mounted.



S89 PROC CHECK S89

A parity error has occurred on the instruction processor (IP) data bus, local RAM, macro, or read register. If the user program has encountered the error, the program terminates abnormally and information about the condition is recorded in the SYSLOG file. For errors that occur while the operating system is in control, the processor is halted.

Action:

For a user program check:

1. Key in SYSTM,0
2. Message S96 is then displayed to identify the defective bank; key in SYSTM,0 to message S96.
3. Display the SYSLOG file to obtain the machine check record for the error.
4. Notify your Sperry Univac system analyst of the error since a main storage bank is shut down.

For an operating system check, notify your Sperry Univac system analyst.

S90 MON CALL ERR S90 S

A software error has occurred. An invalid system call was made.

Action:

1. Reload the operating system.
2. RERUN
3. If trouble persists, initiate a system dump and notify your Sperry Univac system analyst.

For the BC/7-800 Release 5.0 or subsequent releases:

1. RERUN with the partition dump option selected on the OPTION statement.
2. If running user programs, dump the partition where the error occurred; analyze the dump for user-caused MON CALL ERROR before notifying your Sperry Univac systems analyst.
3. If running system software, notify your Sperry Univac system analyst.

S91 MEM. PARITY S91

The processor has detected a parity error on either a read-from or a write-to main storage. If the user program has encountered the error, the program is terminated abnormally and information about the condition is recorded in the SYSLOG file. For errors that occur while the operating system is in control, the processor is halted.

Action:

For a user program check:

1. Key in SYSTM,0.
2. Message S96 is then displayed to identify the defective bank; key in SYSTM,0 to message S96.
3. Display the SYSLOG file to obtain the machine check record of the error.
4. Notify your Sperry Univac system analyst of the error since a main storage bank is shut down.

For an operating system check, notify your Sperry Univac customer engineer.

S92 TRAN I/O ERR S92 S

A read error occurred during loading of a system element.

Action:

1. Restart using a different disk unit.
2. If the trouble persists, use the backup operating system disk.

S93 SYSTEM DTF TRANSIENT ERROR S93

This message is displayed as a result of an I/O error that occurs while saving system parameters when executing procedures of SCL statements. The SYSLIB file is compromised.

Action:

Same as S92.

S94 IMP CHECK S94

A machine check has occurred while using the IMP processor. The error may be:

- undefined IMP function code; or
- invalid IMP process bit.

If the user program has encountered the check, information about the check is found in the SYSLOG file; the user program will be abnormally terminated.

An IMP check caused by the operating system causes the message to be displayed on the system console and the processor to be halted.

Action:

For a user program check:

1. Keyin SYSTM,0.
2. Display the SYSLOG file.
3. The program counter entry in the machine check record provides the address of the IMP call causing the check condition.

For an operating system check, notify your Sperry Univac system analyst.

S95 OP CODE MCHK S95

The processor has detected an attempt to execute an instruction with an undefined operation (OP) code.

If the user program has encountered the check, information about the check condition is found in the SYSLOG file; the user program is abnormally terminated.

If the system check is caused by the operating system, the message is displayed on the console and the processor is halted.

Action:

For a user check condition:

1. Keyin SYSTM,0.
2. Display the SYSLOG file.
3. The program counter entry in the machine check record provides the address of the invalid OP code.

For an operating system check, notify your Sperry Univac system analyst.

Appendix A. Common Responses

A.1. TYPES OF RESPONSES

Responding to a BC/7 suffixed message frequently involves the keyin of one of five common responses. The following paragraphs define each of these common responses. Variations from these responses are covered in the Action paragraphs of Section 3.

A.1.1. Immediate Cancel (CANCEL)

This response causes the program running to be immediately terminated. If the program is part of a job stream, the statements remaining in the job stream will be bypassed. System utility programs will attempt to ensure that all file functions successfully completed before this response are maintained. For RPG II messages, this response terminates the program immediately.

A.1.2. Controlled Cancel (CONTROLLED CANCEL)

This response causes the program to be terminated in an orderly sequence. That is, for RPG II programs this response causes the last record indicator to be set in the program. The RPG II program will then terminate using its normal processing sequence.

A.1.3. Continue (CONTINUE)

The continue response is made when there has been a pause in system or program operation. The pause could be for the purpose of calling attention to a display message, waiting operator action, or as an acknowledgment for the processing steps that will follow. When the continue response is entered, the system or program will perform whatever action is necessary to successfully resume the job. For example, a continue response to a disk read error message implies a retry of the disk read. For other types of messages, it could mean to continue processing with the next job step.

A.1.4. Ignore (IGNORE)

The ignore response directs the program or system to ignore the condition indicated via the message. The results of ignoring an error condition could produce valid results, if the error was something similar to ignoring an error and continuing with the statement processing (compilation) so you can determine if any other errors exist in the program or element. However, in most cases, ignoring an error will produce uncertain results.

A.1.5. Rerun (RERUN)

This requires that you rerun the job, job step, or unfinished portion of a job. For example, if you are processing a series of separate utility programs, and an error develops during the execution of one of these programs, you need only rerun the program that did not successfully complete execution. Rerunning a program usually follows some form of corrective action, such as changing an SCL statement.

A.2. ENTERING COMMON RESPONSES

The common responses may be entered into the system from the operator console by using the following keyins of operator console switches:

<u>Response</u>	<u>Console Keyin</u>
CANCEL	RESPON,PROGn,2
CONTROLLED CANCEL	RESPON,PROGn,4
CONTINUE	RESPON,PROGn
IGNORE	RESPON,PROGn,1
RERUN	Rerun the job, job step, or unfinished portion.
MUTING CONSOLE ALARM	RESPON,PROG1,PROG2

<u>Response</u>	<u>JCW* Keyin</u>
CANCEL	SYSTEM,2,RETURN
CONTROLLED CANCEL	SYSTEM,4,RETURN
CONTINUE	SYSTEM,0,RETURN
IGNORE	SYSTEM,1,RETURN

<u>Response</u>	<u>SCW** Keyin</u>
CANCEL	Pn,2,RETURN
CONTROLLED CANCEL	Pn,4,RETURN
CONTINUE	Pn,RETURN
IGNORE	Pn,1,RETURN

* Job control workstation

**System control workstation (BC/7-900 only); Pn references the partition (P1 through P4) to which the response is directed.

When message routing is in effect, messages may be responded to by using the workstation keyboard. To respond, press SYSTM, key in the numeric response, and press RETURN.

CAUTION

When running from a procedure, responses to suffixed messages that permit you to reenter control statements are not valid. The operator cannot reenter control statements in the middle of a procedure.