

www.ringdale.com



MinIT 5250E's MinIT-Man Remote Manager User's Guide



Introduction

The MinITMan Management Utility provides centralized management for the Nlynx MinIT 5250E Thin Client. With this utility, you will be able to view active units, monitor and manage their download code versions, send messages, remotely configure the units and even take over the remote unit's desktop.

The MinIT-Man Remote Manager is a very useful tool that can be used to troubleshoot, upgrade, save profiles, reboot clients, bring up a 5250 session, and send messages.

This User's Guide will lead you through the installation of the management software. There is extensive help within the MinitMan manager to guide you through the operation.

Requirements

- Windows 98, 2000, or XP.
- 256 MB to perform well without swapping.
- The MinIT-Man Manager uses fixed fonts. It runs best on 1024 x 768.
- On a 1Ghz 256MB machine it starts in less than 2 seconds. On a slower computer it make take 15 seconds.
- A version of the MinitMan Manager is also available for Linux 2.4 or higher.

Secs.	Act	Unit	Description	I/P Addr	Version	Mac Addr	Time Last Seen
232	<input checked="" type="checkbox"/>	00001	Lab_Test_Unit	192.168.1.160	2.0	00:90:dc:02:2a:be	Thu Feb 05 18:25:10
	<input type="checkbox"/>	00012	Phils_Office	192.168.1.182	2.0	90:12:02:51:02:d7	Thu Feb 05 18:25:10
	<input type="checkbox"/>	02a5fd		192.168.10.8	2.4.17	00:90:dc:02:a5:fd	Wed Aug 23 15:37:14
	<input type="checkbox"/>	03510c		192.168.10.2	2.4.17	00:90:dc:03:51:0c	Wed Aug 23 16:06:10
	<input type="checkbox"/>	035434		205.242.238.48	2.4.17	00:90:dc:03:54:34	Wed Aug 23 15:41:14
	<input type="checkbox"/>	0445d3		192.168.10.5	2.2.17	00:90:dc:04:45:d3	Thu Aug 31 16:27:36

Download

The MinITMan Manager is located at <ftp://ftp.ringdale.com/support/Nlynx/minit/MinITManManager>

The file to download is Setup.exe

Installation

When you insert the MinitMan CD in the CD drive, it should automatically start the installation process. If this does not happen, double click on Setup.exe in the root directory of the CD.

This will begin the Install Shield wizard for installing the MinitMan Manager on your Windows PC. It will copy all the required files to the PC, register the application and create a Shortcut to MinitMan on the desktop. The program will be installed on your computer in the MinitMan folder on drive C. If this is a problem for you, please contact Nlynx Technical Support.

To install it, double click on Setup.exe.

This will begin the Install Shield wizard for installing the MinitMan Manager on your Windows PC. It will copy all the required files to the PC, register the application and create a Shortcut to MinitMan on the desktop. The program will be installed on your computer in a folder named MinitMan on drive C.

The Install will also create an entry to uninstall the MinitMan Manager from your PC. You can do this through the Control Panel of the PC, or from the **Start** button -- under **Programs, MinitMan,** and **Uninstall.**

Starting the MinIT-Man Remote Manager



Click on the shortcut on your desktop *or* click on your Windows **Start** button, then select **Programs,** and then MinitMan Manager and finally click on the **Launch MinitMan** icon.  Launch MinitMan

Two icons will be on the taskbar while the MinIT-Man Remote Manager is active.



Discovery of Clients

When you first start the software it will attempt to discover active clients. Each client must have a unique Unit ID number. The MinIT Manager becomes 'aware' of a client through process called Discovery. Discovery occurs Passively, by the unsolicited message from the client, or Actively, by a request from the manager.

Passive discovery occurs when a MinIT Client is powered on, rebooted, or the user restarts the client side MinITMan. The client sends out a '*hereiam*' broadcast to the broadcast address 255.255.255.255. Any MinITMan Managers on the local LAN will see this message and record several pieces of information about the client, including the unit number, IP address, and MAC address. The manager will then communicate directly with the client and request a copy of the client's settings file.

Routers do not pass the 255.255.255.255 broadcasts. If there is a router between the PC with the MinITMan Manager software and the MinIT-5250E client, passive discovery will not occur. This is not necessarily a problem as the manager can initiate the discovery.

Active discovery occurs several ways:

- 1) The manager broadcasts a '*whoisthere*' message when the program is started.
- 2) The manager broadcasts a '*whoisthere*' every time the interval timer expires. This timer is set to 600 seconds on initialization, but can be modified in the File/Properties Tab.
- 3) The manager broadcasts a '*whoisthere*' when you click on the **RefreshAll** button.
- 4) The manager broadcasts a '*whoisthere*' to specific IP addresses when you select items in the client list box and click the **Refresh** button.

As mentioned above, Discovery occurs whenever the interval-polling timer expires. This discovery requires several seconds. THEREFORE: It may be necessary to disable the countdown if you are doing work on some of the units, for instance sending updates. You can suspend the countdown by unchecking the **Autopoll** box.

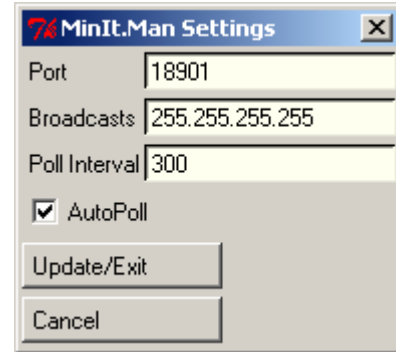
The Interval polling timer should not be set to less than 60 seconds. The amount of network traffic is miniscule, so there is no good reason to make it large, either. The default is 600 seconds (10 minutes). It is recommended to leave it in the 5 to 30 minute range. (300 – 1800 seconds).

Broadcasts

Three of the four Active Discovery methods employ broadcast. If your clients are behind routers that do not allow broadcasts, the manager will not work. Upon installation, the manager broadcast address is set to 255.255.255.255. Theoretically, this should suffice for all cases. But there are two possible problems:

1. A router will pass more limited broadcasts to networks it knows about, but not universal broadcasts.

2. Some Win32 machines have a strange anomaly in that they will not send universal broadcasts. If you are not seeing any clients in your list, or certain clients you to be behind routers, one of the above is possibly the problem. In this case, in the File/Properties tab, you can change the broadcasts to a comma-separated list, e.g.: 192.168.1.255, 192.2.255, 192.168.3.128.



Unit Number Parameter

In the MinIT-5250E configuration, there is a Unit Information menu there is a "Unit No." parameter. This is used to identify the unit in the MinIT Manager. If it is set to "99999" it will use the last 5 digits of the MAC address. "99999" is the default.

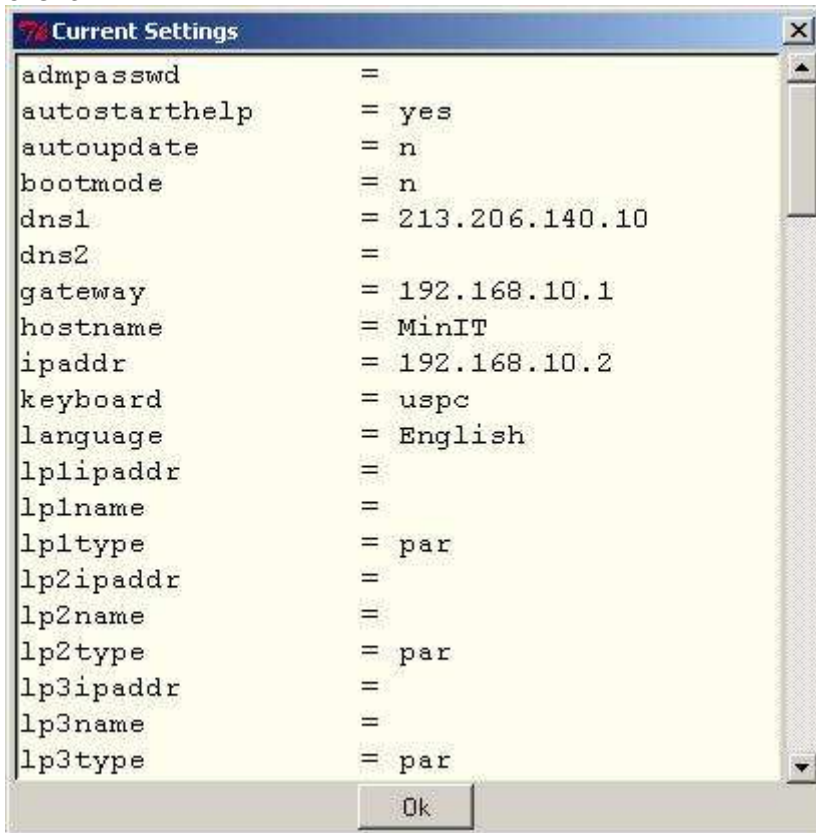
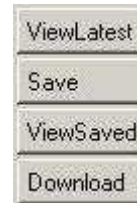
Multiple Managers

You can run MinITMan on several computers simultaneously. It is advised that you only use one station for remote maintenance. If you wish to have others running for the purpose of monitoring or messaging, this should be fine.

Settings:

The SETTINGS options are used to look at the parameters in the MinIT5250E clients. If you have multiple clients to configure the same way, or putting in a replacement, this tool can shorten the time.

Click the **ViewLatest** button to show the Current Settings of that client.

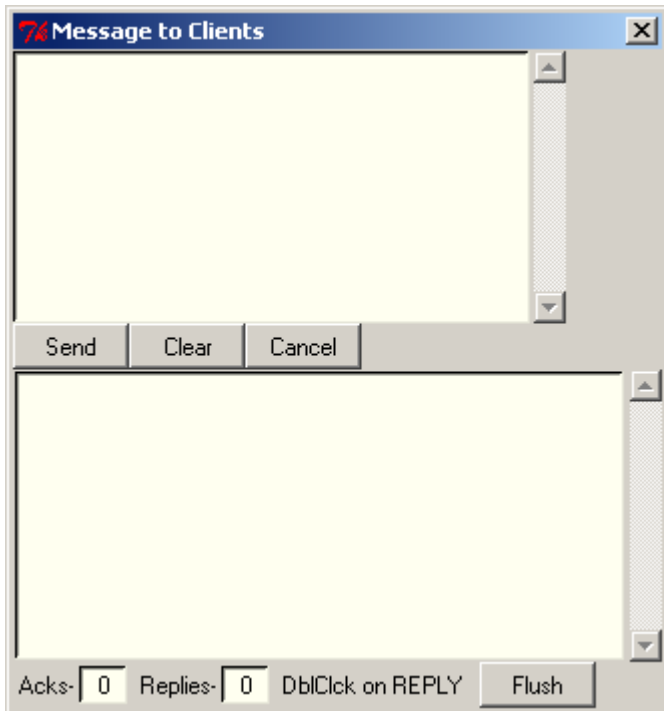


- If the settings are correct, click the **OK** button.
- If you want to save these settings on the MinIT Manager PC, then click the **Save** button.
- If you have settings that you have saved, then you can use the **ViewSaved** button to select it.
- If you want to download those settings to a new or replacement client, use the **Download** button.

NOTE: If you are duplicating an existing unit, remember to change the Unit Network Name because it must be unique in order for DNS servers to be able to identify this unit on the network. Also *the name of the session needs to be unique*. The AS/400 will not let two sessions have the same name.

Message

The message button lets you send a message to all of the



Desktop

The **Desktop** button lets you bring up the Administration window for any client that you select.

NOTE: You do not see the same Desktop that the user sees.

NOTE: When you open the Administration window you can start a session to the AS/400. If a user already had that session open, you will take it from the user.

Reboot

The main use of this option is for rebooting all of the MinIT-5250E clients after an AS/400 IPL. When the AS/400 completes an IPL it does not know the status of the clients that may have been active prior to the IPL. Similarly the clients do not know that the AS/400 has IPL'd. Selecting all of the clients and then clicking the **Reboot** button will restart the communication of all of the clients and bring them to a signon screen.

Upgrade Procedure

Get the latest MinIT 5250E release on our FTP site at <ftp://ftp.nlynx.com/Support/Nlynx/minit>

To see the MinIT 5250E version, just look at the bar on the top of the MinIT Administration window.



If your unit is below 2.0, you must upgrade to 2.0 first, then on to the current version.

To upgrade the MinIT 5250E from the MinIT Manager:

Download the latest software from <ftp://ftp.nlynx.com/Support/Nlynx/minit> and put it in the **C:\minitman\updates** folder.

Start the MinIT Manager.

To make certain that you have accurate information in the client list if you have a very large interval timer, you may wish to update the list with **RefreshAll**.

NOTE: Some upgrades clear out settings, so it is recommended that you save settings prior to performing the upgrade, then reload them afterwards.

In the MinIT Manager, click the **Update** button.

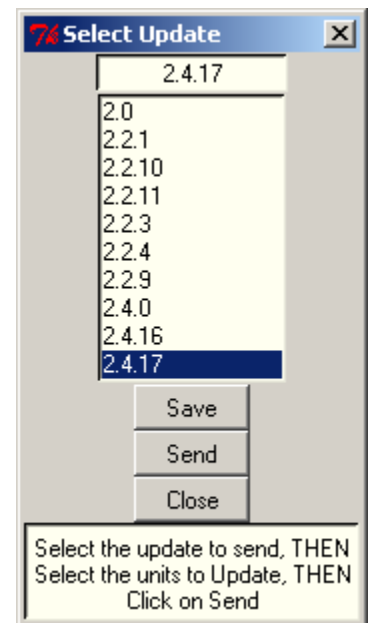
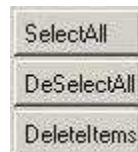
Select the Update to send, for example 2.4.17. It will show in the top box.

Select the Units to send it to in the main window.

Click the **Send** button.

NOTE: You can use the Select buttons to select all or deselect all clients for an upgrade.

NOTE: The **DeleteItems** button is used to remove clients that are no longer on the system.



Exiting the software

To exit the software, you must click the **Exit** button, in the lower left.

For additional information on the MinitMan Manager, select the Help menu.

For additional assistance on the MinitMan Manager or the Minit-5250E, visit us on the web at www.nlynx.com or www.ringdale.com or contact us at toll-free 888-288-9080 or support@ringdale.com