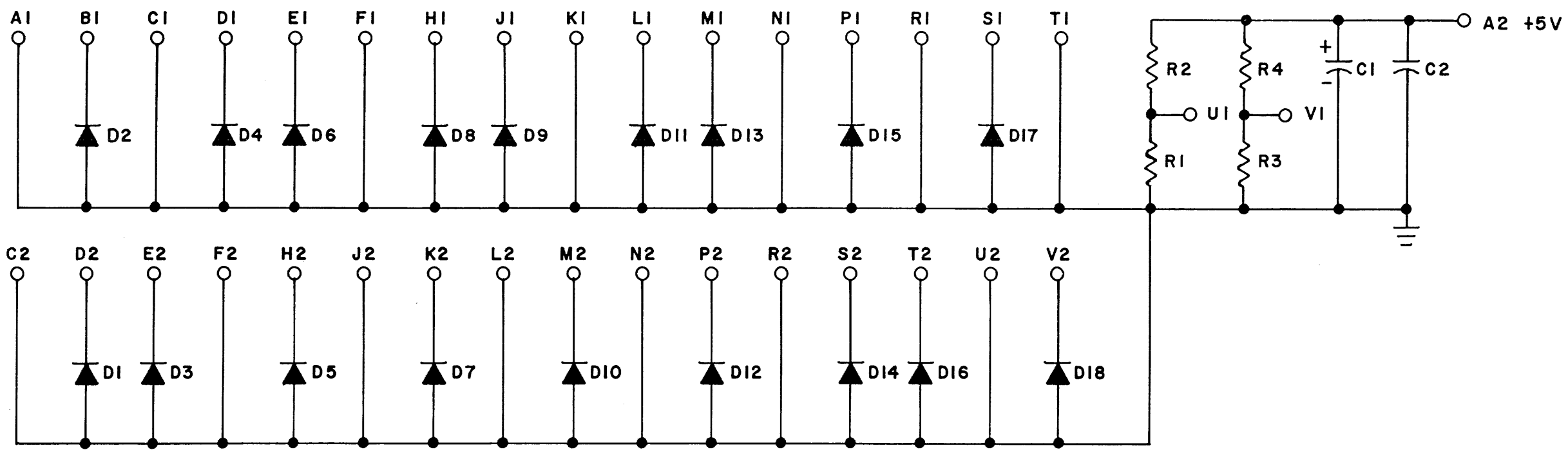




REV. B	NUMBER M907-0-1	SIZE CS	CON. 315
--------	-----------------	---------	----------

THIS SCHEMATIC IS FURNISHED ONLY FOR TEST AND MAINTENANCE PURPOSES. THE CIRCUITS ARE PROPRIETARY IN NATURE AND SHOULD BE TREATED ACCORDINGLY. COPYRIGHT 1968 BY DIGITAL EQUIPMENT CORPORATION



 <----->
 <----->

DI-D18	DIODE D664	1100114
R2,R4	RES. 330 1/4W 5% CC	1300295
R1,R3	RES. 750 1/4W 5% CC	1301401
C1	CAP. 6.8MFD 35V 20% S.TANT	1000067
C2	CAP. .01MFD 100V 20% DISC	1001610
PARTS LIST		A-PL-M907-0-0
REFERENCE DESIGNATION	DESCRIPTION	PART NO.

REVISIONS CHK CHG NO. REV. 00001 B 00001 B	DRN. <i>m. Keller</i> DATE 8-9-68	TRANSISTOR & DIODE CONVERSION CHART		digital EQUIPMENT CORPORATION MAYNARD, MASSACHUSETTS	TITLE DIODE CLAMP M907			
	CHK'D <i>M. Keller</i> DATE 8-9-68	DEC D664	EIA IN3606		SIZE B	CODE CS	NUMBER M907-0-1	REV. B
	ENG. <i>F. O'Laughlin</i> DATE 9/4/68				PRINTED CIRCUIT REV. A			
	PROD. <i>[Signature]</i> DATE							



4

DISG 324 424 435² PINK