

POLYCENTER™ AssetWORKS

The industry's most comprehensive asset management solution

Multivendor

Customer Services

from Digital

As a network manager, you're already benefitting from having Microsoft® Systems Management Server (SMS) on your network. But do you know exactly what software is being used, when, and where on the network?

POLYCENTER AssetWORKS brings you the benefits of better resource utilization, reduced software lifecycle costs, improved inventory management, more efficient upgrade planning, and enhanced service to your users.

Full integration with Systems Management Server

AssetWORKS and SMS work together to provide comprehensive configuration management capabilities. Management functions are available right from the SMS Administrator console—and that's just the beginning of its full integration. AssetWORKS utilizes the SMS infrastructure, including site servers, logon servers, and clients. And, it extends SMS software distribution and installation capabilities to industry-leading UNIX and OpenVMS systems. If you know how to use SMS, then you already know how to use AssetWORKS!

Cost-effective decision support

Digital's industry-leading, enterprise-wide, asset management solution automatically collects hardware and software configuration data, meters software usage, distributes applications and upgrades, and generates valuable management reports for cost-effective decision support.

Highlights

- Meters and audits software usage across a network
- Graphically reports on software usage and other asset information
- Extends SMS capabilities of collecting and maintaining hardware and software inventory for computers across your enterprise environment, including UNIX and OpenVMS platforms
- Automates software installations and upgrades at remote sites
- Consolidates and organizes configuration and inventory data in a central database—automatically



Extending SMS functions to OpenVMS and UNIX

AssetWORKS operates as a robust extension to SMS capabilities. It extends SMS software distribution and installation capabilities to industry-leading UNIX and OpenVMS systems. From an AssetWORKS-enabled SMS Administrator console, you can easily drag and drop UNIX and OpenVMS packages to target systems.

AssetWORKS also extends SMS inventory to UNIX and OpenVMS systems. It collects hardware and software configurations regularly and automatically. This information is integrated as inventory into SMS and the user interface so that you can manage your complete systems environment from a single console.

AssetWORKS extends the SMS Management Information File (MIF) capabilities to support the MIF Entry utility on Digital UNIX, ULTRIX™ and OpenVMS client systems, enabling you to add new groups to your inventory. And you can customize UNIX inventory group descriptions to tailor inventory data collection to your own needs.

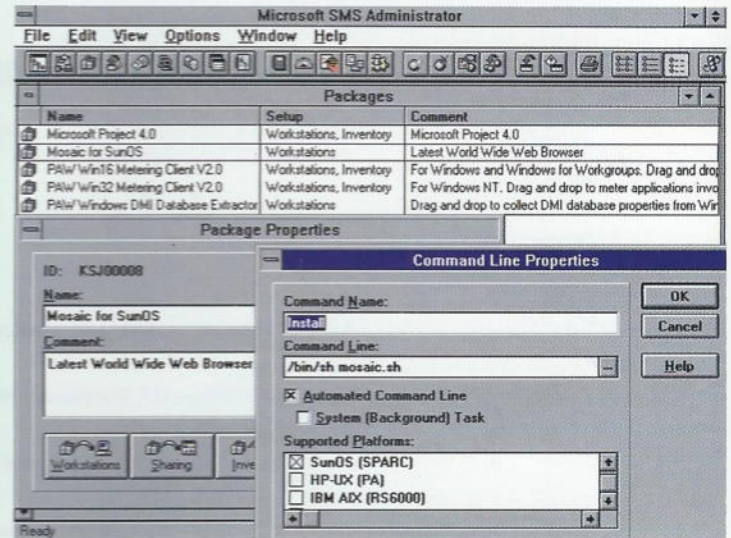
AssetWORKS collects Desktop Management Interface (DMI) database properties from SMS client systems that are DMI-enabled and running MS-DOS, Windows 3.1, Windows 95 or OS/2®. Providing you with complete management and reporting capabilities and supporting an array of

hardware and operating systems including UNIX and OpenVMS, AssetWORKS brings you the full coverage you need in a multiplatform enterprise environment.

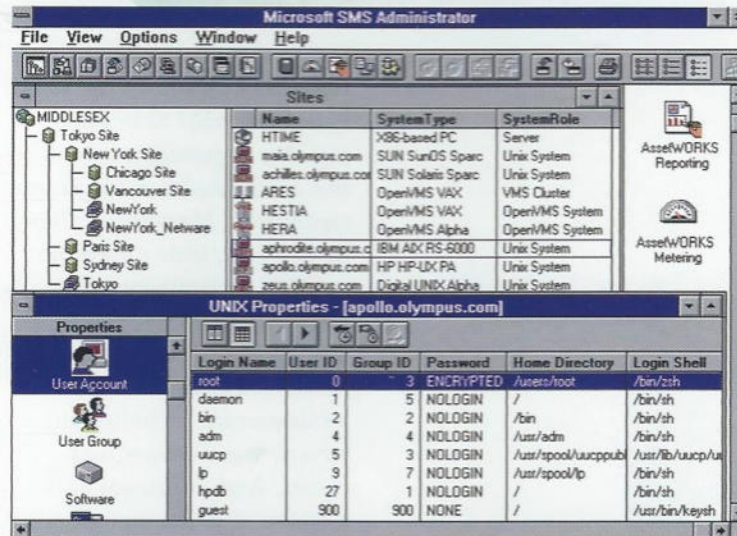
Streamline your software distribution across the enterprise

Software distribution across the enterprise has never been easier. With AssetWORKS, you simply drag and drop software packages onto your target systems.

For example, working at an SMS administrator console, you can drag and drop software packages to be installed on Digital UNIX, OpenVMS, Windows, and MS-DOS systems—as well as SunOS, Macintosh and many other platforms.



Use the SMS Administrator to define software packages that can be "dragged and dropped" onto UNIX and OpenVMS machines.



AssetWORKS extends SMS with support for industry leading UNIX and OpenVMS systems.

Integrated with NetView™ for Windows NT

Bringing additional efficiencies to your network management operations, AssetWORKS now enables you to access a variety of POLYCENTER Manager on NetView for Windows NT (PNV/NT) applications from within the SMS Administrator console. Available applications include Find Node, Node Properties, MIB Browse, IP Traffic and Interface Traffic.

A simple client/server solution

AssetWORKS has two main components in addition to the networked clients it serves: a site server and an administrator's console. The site server, based on Windows NT Server software, contains the configuration database and any software to be distributed. For load balancing and scalability, one or more helper servers, distribution servers, or database servers can also be used.

The administrator's console, based on Windows NT Workstation software, provides the graphical user interface to perform all management tasks. The administrator's console can run on the site server or on a separate station.

Planning for success

With AssetWORKS, upgrade planning is a straightforward task. You no longer need to ask, "What systems do I have and how are they deployed?" or "What software has changed and when did it change?" or "Who is using what software and when?" With AssetWORKS, you can quickly survey your system configuration data to determine what prerequisites are needed or what hardware updates required prior to a software upgrade.

All the information you need is stored in a common database that is automatically updated every time your hardware or software is upgraded. No more guesswork, no more confusion, no more relying on someone's hazy memory when valuable resources are at stake.

POLYCENTER AssetWORKS Product Capabilities

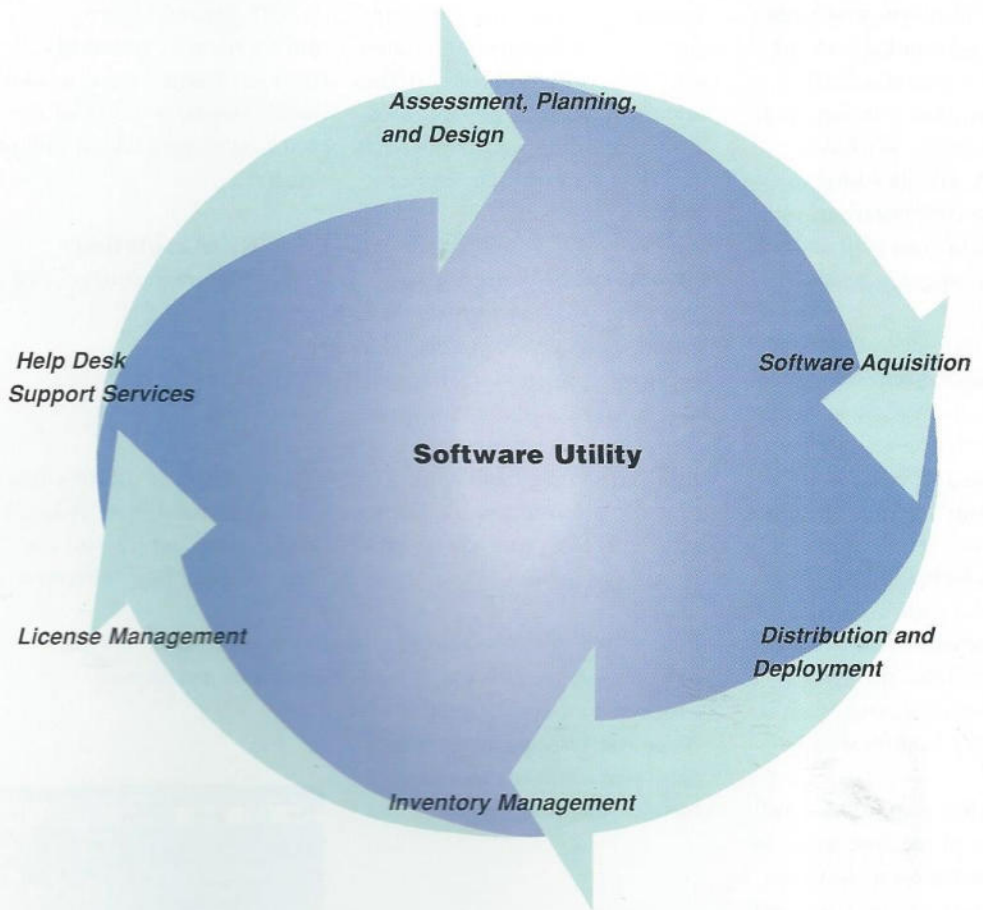
	Metering and auditing	Ad-hoc Graphical Reporting	Inventory	Software distribution	Remote control & diagnostics	Network application access
MS-DOS	●	●	▲	▲	▲	
Windows	●	●	▲	▲	▲	▲
OS/2		●	▲	▲		
Macintosh	●	●	▲	▲		
Windows 95		●	▲	▲	▲	
Windows NT	●	●	▲	▲		▲
Windows for Workgroups	●	●	▲	▲	▲	▲
Digital UNIX		●	●	●		
ULTRIX		●	●	●		
OpenVMS		●	●	●		
HP-UX		●	●	●		
IBM AIX		●	●	●		
Sun Solaris		●	●	●		
SunOS		●	●	●		

POLYCENTER AssetWORKS ●

Microsoft Systems Management Server ▲

Digital's Software Utility

POLYCENTER AssetWORKS is part of Digital's Software Utility. The Software Utility provides the optimum management solution for your business needs, using integrated products and services to control costs throughout your environment and at every stage of the software life-cycle, from acquisition to support.



Asset Management

Digital's Software Utility offers a wide range of asset management services. You can choose the combination of products and services you need in order to design and implement the asset management solution that works best for you.

Specific services are available: Asset Management Consulting, Asset Management Design, Asset Management Implementation, Inventory Management and Software License Review.

Asset Management Consulting
We help you identify your business goals with respect to asset management, evaluate your current asset management practices, and design a new process that provides, ongoing maintenance.

Asset Management Design

We help you design your SMS/AssetWORKS topology of site servers, logon servers, etc., to fit your specific needs and environment.

Asset Management Implementation

We install and configure SMS and AssetWORKS and provide orientation to ensure ongoing management of hardware and software assets.

Inventory Management

We develop a database providing you with an inventory of the hardware and software assets in your environment, as well as written reports to give you an accurate picture.

Software License Review

We document the number and type of all software licenses you have acquired, compare this to the actual number of installed software products in your environment, and work with you to plan actions and strategies to keep you in compliance.

Software Acquisition

As a core part of Digital's Software Utility, Software Acquisition allows managers of large distributed environments to purchase desktop software in volume and at a discount. Digital's capabilities include central distribution of software across international boundaries, taking into account all local value-added taxes, import duties, and other additional charges. No other vendor brings you this unique advantage.

Help Desk Support Services

With the Software Utility, you ensure optimum use of your software from day one with Help Desk User, Help Desk Pro or Help Desk Premium Support. You can choose to provide expert, responsive support directly to your end-users, or deliver support to your technical staff to supplement your in-house help desk capabilities.

Software metering for optimized, cost-efficient usage

While SMS inventories what software is installed on your hard disks, you also need to know just *what* is being used, *when* and *where*. With AssetWORKS PC clients added to your SMS configuration, you gain insight into your software usage and upgrade needs.

Metering lets you collect application usage information for specified, individual software packages. Using the SMS Administrator, you specify the applications you want to track. AssetWORKS detects and records which applications are running on your network at a given moment. If the application is run from the server, AssetWORKS tells you when it is being run and by whom.

Auditing lets you automatically discover and measure usage of all the software applications running on computer systems in your network; you do not need to specify a particular application.

Comprehensive reporting

From the SMS Administrator console, you can view and print many valuable metering reports that help you graphically understand the usage of all your software, including number of users and how heavily each application is being used.

Reports can be generated in graphical and text format; they can focus on general software application usage, server application usage, site/domain application usage, comparative application usage and application execution locations. Many other inventory and job reports are also available.

Report data can be exported to Microsoft Excel™ for additional analysis. Digital's AssetWORKS supports the use of third party report generators such as Microsoft Access™.

AssetWORKS provides over 50 preformatted templates based on SMS general reports. You can use them as is, modify them as needed, or create additional templates based on the metering or general SMS report drivers.

Benefits of metering

AssetWORKS metering provides substantial benefits:

- *Better utilization of licensed software*

You can discover underutilized licenses on local hard disks and on the server, which you can then redeploy more effectively

- *Better planning of software acquisition and upgrades*

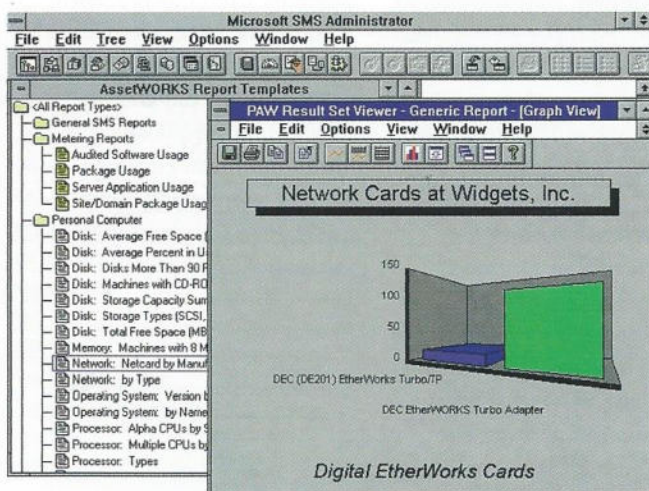
Metering reports show you who uses each application and how heavily—improving the effectiveness of your initial purchase and upgrade decisions.

- *Accurate compliance verification*

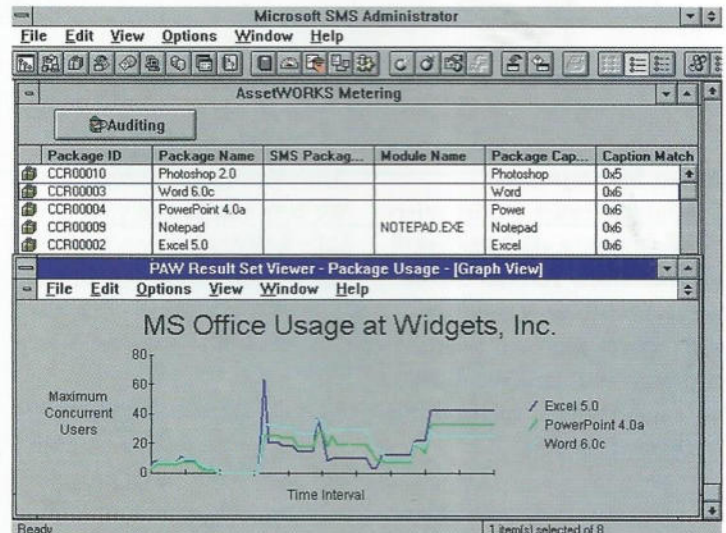
By comparing the metering data with the number of licenses for a given application, you can verify your compliance with license requirements.

- *User-transparent monitoring*

Metering and auditing are non-intrusive background functions. Your users are never locked out of the applications they need.



AssetWORKS adds graphical reports to SMS Administrator. In addition to communicating metering results, these reports can be used to graphically depict the SMS inventory.



AssetWORKS adds support for software usage metering and auditing to SMS. Metering rules are defined directly from the SMS Administrator console, and results are displayed graphically

POLYCENTER AssetWORKS System Requirements

	Primary Site Server	Secondary Site Server	Administrator's Console
CPU/System	80486-66, Alpha, Pentium®	80486-66, Alpha, Pentium	80486-33, Alpha, Pentium
RAM	32MB	24MB	16MB
File System	NTFS (on the SMS partition only)	NTFS (on the SMS partition only)	
Disk Space	100MB (A 50 MB paging file is required for installation)	100MB	2MB
Additional Hardware	Network card CD-ROM drive	Network card	Network card
Software	Systems Management Server (SMS) V1.1 Windows NT Server V3.5 (SP2) or V3.51 SQL Server for Windows NT V4.21A or V6.0	Systems Management Server(SMS) V1.1 Windows NT Server V3.5 (SP2) or V3.51	Windows NT V3.5 (SP2) or V3.51

For more information

To find out more about POLYCENTER AssetWORKS and Digital's Software Utility, contact your local Digital Multivendor Customer Services representative or authorized business partner, or visit Digital's Software Utility pages on the World Wide Web at <http://www.digital.com/info/mcs/tsu/tsu.html>

Digital believes the information in this publication is accurate as of its publication date; such information is subject to change without notice. Digital is not responsible for any inadvertent errors.

Digital conducts its business in a manner that conserves the environment and protects the safety and health of its employees, customers, and the community.

AssetWORKS, AXP, DEC, DECnet, Digital, the Digital logo, OpenVMS, PATHWORKS, POLYCENTER, ULTRIX, VAX and VAXstation are trademarks of Digital Equipment Corporation.

AIX, IBM, NetView, and OS/2 are registered trademarks of International Business Machines Corporation. Apple and Macintosh are registered trademarks of Apple Computer, Inc. HP-UX is a registered trademark of Hewlett-Packard Company. Intel and PENTIUM are registered trademarks of Intel Corporation. Microsoft, MS-DOS, and Windows NT are registered trademarks and Microsoft Access, Microsoft Excel, and Microsoft Windows are trademarks of Microsoft Corporation. Novell and NetWare are registered trademarks of Novell, Inc. Solaris and SunOS are registered trademarks of Sun Microsystems, Inc. UNIX is a registered trademark in the United States and other countries, licensed exclusively through X/Open Company, Ltd.

All other trademarks and registered trademarks are the property of their respective holders.

AssetWORKS PC Client system requirements

Windows, Windows for Workgroups and Windows NT

512 KB disk space
SMS Client V1.1
AssetWORKS PC Client V2.0

MS-DOS

512 KB disk space
TSR requires 4K of low memory
SMS Client V1.1
AssetWORKS PC Client V2.0

Macintosh

512 KB disk space
System 7 or higher
SMS Client V1.1
AssetWORKS PC Client V2.0

AssetWORKS Enterprise Client system requirements

IBM AIX

IBM RS6000 or higher
AIX V3.2 or greater
9MB disk space
AssetWORKS Enterprise Client V2.0

Sun Solaris SPARC processors

Solaris V2.3 or greater
9MB disk space
AssetWORKS Enterprise Client V2.0

HP-UX HP9000 series 700 or 800

HP-UX V9.0 or greater
9MB disk space
AssetWORKS Enterprise Client V2.0

SunOS SPARC processors

SunOS V4.1.2 or greater.
9 MB disk space
AssetWORKS Enterprise Client V2.0

ULTRIX RISC processors

ULTRIX Version 4.3 or greater
9 MB disk space
AssetWORKS Enterprise Client V2.0

Digital UNIX Alpha processors

Digital UNIX V2.0 or greater
9 MB disk space
AssetWORKS Enterprise Client V2.0

OpenVMS Alpha processors

OpenVMS Alpha V6.1 or greater
3,500 blocks disk space
AssetWORKS Enterprise Client V2.0

VAX processors

OpenVMS VAX Version 5.5-2 or greater
3,000 blocks disk space
AssetWORKS Enterprise Client V2.0